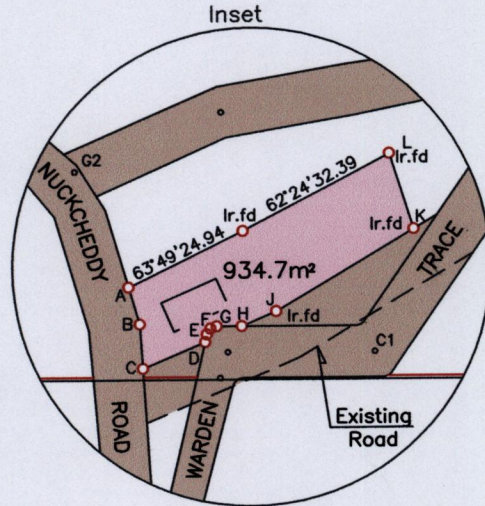


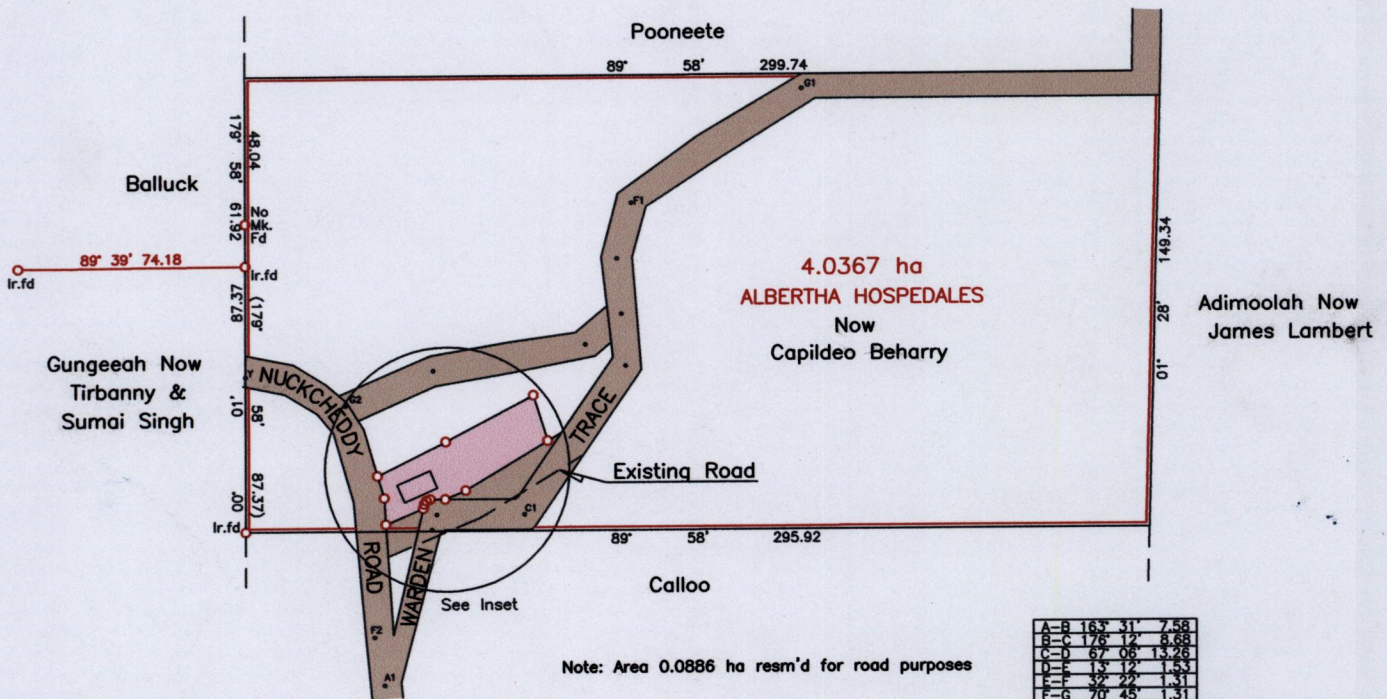
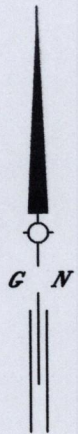
1414

R.P.O Vol.12 Fol. 247
C.T. Vol. 2377 Fol. 179

Refs: L&S BK 322 Fol. 20
S.O. No. 532/26



SCALE:1/1500



Note: Area 0.0886 ha resm'd for road purposes

A-B	163	31	7.58
B-C	176	12	8.68
C-D	67	08	13.26
D-E	13	12	1.53
E-F	32	22	1.31
F-G	70	42	1.31
G-H	89	58	4.89
H-I	67	08	7.35
I-K	59	10	31.38
K-L	342	12	15.54

Approved *[Signature]*
9 Director of Surveys 2008-8-8

o Denotes Iron put except otherwise stated
Bearings are Cassini Grid based on Solar Observations

SCALE 1/2500
Distances are in Metres

Plan of a Parcel of land coloured pink in the Ward of Savana Grande
Containing nine three four point seven square metres
Surveyed by me with due authority, on May 11 2002
In accordance with Regulation 25 (1) of the Land Surveyors' Regulations 1998,
I certify that this plan is correct.

Checked by *[Signature]* *[Signature]*

Entered..... Trinidad & Tobago Land Surveyor *[Signature]* 2008