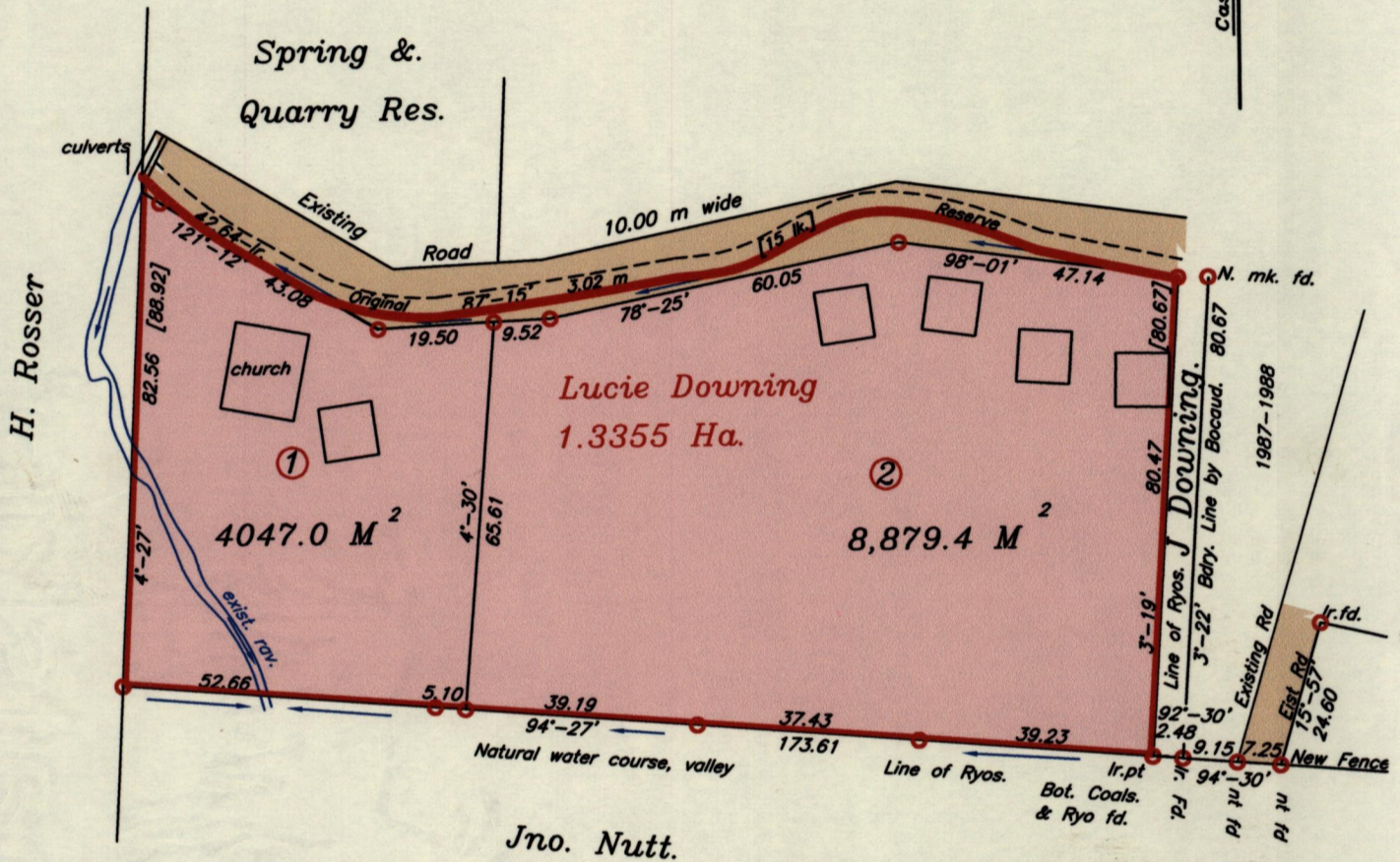
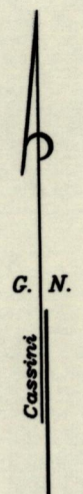


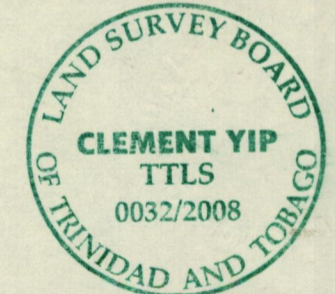
Vide; Bk. 322 Fol. 118  
 Bk. 1179 Fol. 106



Legend.

- exist. rov.
- 4.5 M Bld. Line
- Direction Drains
- Building
- Original 15 Lk. Res.

Approved Director of Surveys. 2008.8.5



To obtain Compass Bearings + 3'

Scale: 1/1,250

○ Denotes Ir. pt. unless stated otherwise. Bearings are based on Solar Observations. Distances are in Metres.

PLAN of two parcels of land coloured pink in the Ward of Ortoire  
 Containing together, one point two nine two six four hectares..  
 Surveyed by me with due authority, in May 1980/Dec. 1990.

In accordance with Regulation 25[1] of the Land Surveyors Regulations 1998,  
 I certify that this plan is correct.

Entered on .....  
 Checked by 2008.8.5  
 2008

Trinidad & Tobago Land Surveyor, 2008