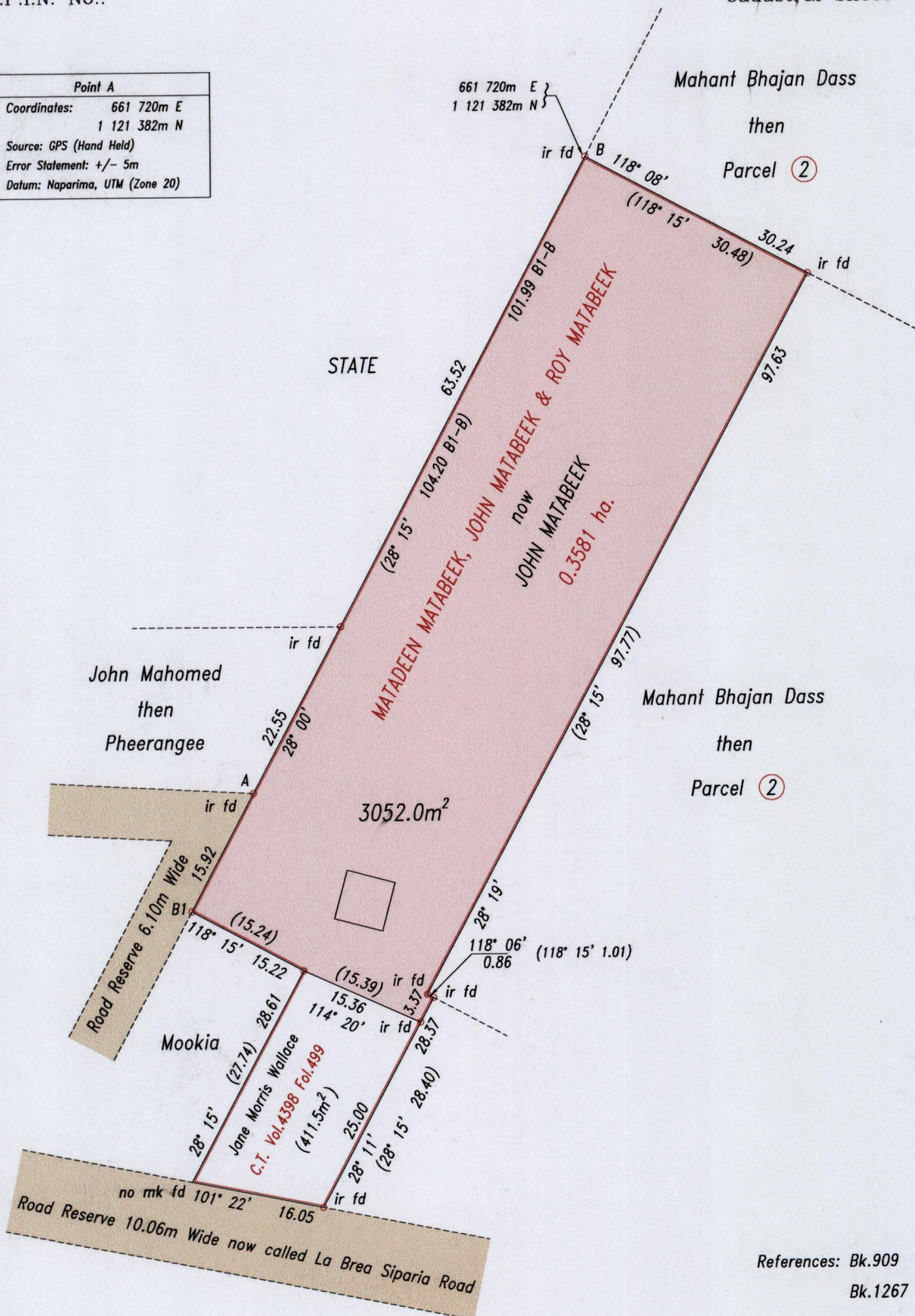


1414 2007

R.P.O. Vol. 125 Fol. 667  
 C.T. Vol. 3584 Fol. 219  
 U.P.I.N. No.:

Ward of Siparia  
 County of St. Patrick  
 Cadastral Sheet G.17.B. 73A  
 2/a

Point A	
Coordinates:	661 720m E 1 121 382m N
Source:	GPS (Hand Held)
Error Statement:	+/- 5m
Datum:	Naparima, UTM (Zone 20)



References: Bk.909 Fol.112  
 Bk.1267 Fol.246

Approved  
  
 Director of Surveys 2008.7.29

SCALE 1: 750  
 Distances are in metres  
 Denotes iron put except otherwise stated

Bearings are Cassini Grid based on Solar Observations

PLAN of a parcel of land coloured pink in the Ward of Siparia  
 Containing three thousand and fifty two point zero square metres  
 Surveyed by me, with due authority, in April 2007

In accordance with Regulation 25(1) of the Land Surveyors' Regulations 1998, I certify that this plan is correct.

Checked by L.A. Roopchand  
 Entered ..... Trinidad & Tobago Land Surveyor 24/6/2008

