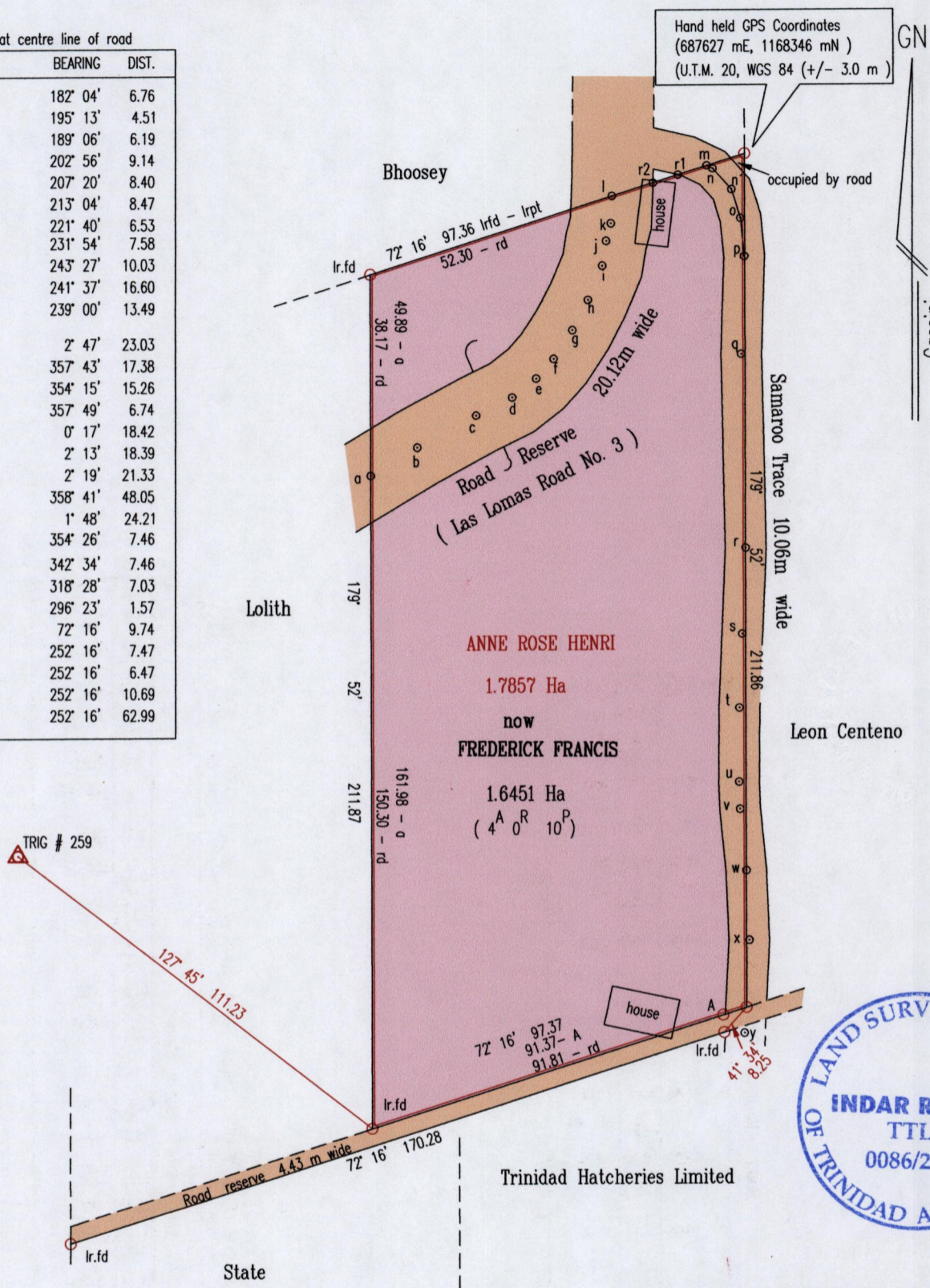


VESTING ORDER

Stations at centre line of road

LINE	BEARING	DIST.
l - k	182° 04'	6.76
k - j	195° 13'	4.51
j - i	189° 06'	6.19
i - h	202° 56'	9.14
h - g	207° 20'	8.40
g - f	213° 04'	8.47
f - e	221° 40'	6.53
e - d	231° 54'	7.58
d - c	243° 27'	10.03
c - b	241° 37'	16.60
b - a	239° 00'	13.49
y - x	2° 47'	23.03
x - w	357° 43'	17.38
w - v	354° 15'	15.26
v - u	357° 49'	6.74
u - t	0° 17'	18.42
t - s	2° 13'	18.39
s - r	2° 19'	21.33
r - q	358° 41'	48.05
q - p	1° 48'	24.21
p - o	354° 26'	7.46
o - n1	342° 34'	7.46
n1 - n	318° 28'	7.03
n - m	296° 23'	1.57
m - lrpt	72° 16'	9.74
m - r1	252° 16'	7.47
r1 - r2	252° 16'	6.47
r2 - l	252° 16'	10.69
l - lrfd	252° 16'	62.99



Vide
Bk. 11:7
Plan P.F 99

Approved

*[Signature]*  
 9 Director of Surveys 2008-7-14

Bearings are Cassini Grid based on Solar Obs.

○ Denotes Iron Put unless otherwise stated

Plan of a Parcel of land coloured pink in the Ward of San Rafael

Containing one point six four five one hectare

Surveyed by me, with due authority, in April 2008

In accordance with Regulation 25(1) of the Land Surveyors' Regulations 1998, I certify that this plan is correct.

Checked by *[Signature]* 10/7/08

*[Signature]* Indar Ragoo

Entered on .....

Trinidad & Tobago Land Surveyor *[Signature]* 16<sup>th</sup> / June 2008

SCALE 1:1500  
 Distances are in Metres



Road Reserve 20.12m wide

179°52'11.68"	a	179°52'11.72"
13.49	10.06	
b	239° 00'	
10.06	16.60	10.06
c	241° 37'	
10.06	10.03	10.06
d	243° 27'	
10.06	7.58	10.06
e	231° 54'	
10.06	6.53	10.06
f	221° 40'	
10.06	8.47	10.06
g	213° 04'	
10.06	8.40	10.06
h	207° 20'	
10.06	9.14	10.06
i	202° 56'	
10.06	6.19	10.06
j	189° 06'	
10.06	4.51	10.06
k	195° 13'	
10.06	6.76	10.06
l	182° 04'	
172°16'10.69"		172°16'10.69"

72°16'	m	5.03
7.47	1.57	5.03
54°81'	n	296° 23'
162°28'	7.03	5.03
4.98	n1	318° 28'
162°34'	7.46	5.03
5.87	o	342° 34'
8.67	7.46	5.03
174°26'	p	354° 26'
20°42'	24.21	5.03
8°1'	q	1° 48'
178°41'	48.05	5.03
48.03	r	358° 41'
41.12	21.33	5.03
84°81'	s	2° 19'
51.2	18.39	5.03
19°81'	t	2° 13'
41.0	18.42	10.06
7.01	u	0° 17'
177°49'	6.74	5.03
15.27	v	357° 49'
174°15'	15.26	5.03
17.01	w	354° 15'
177°43'	17.38	5.03
17.01	x	357° 43'
23.03	x	5.03
6.24	y	2° 47'
72°16' 5.37"		

