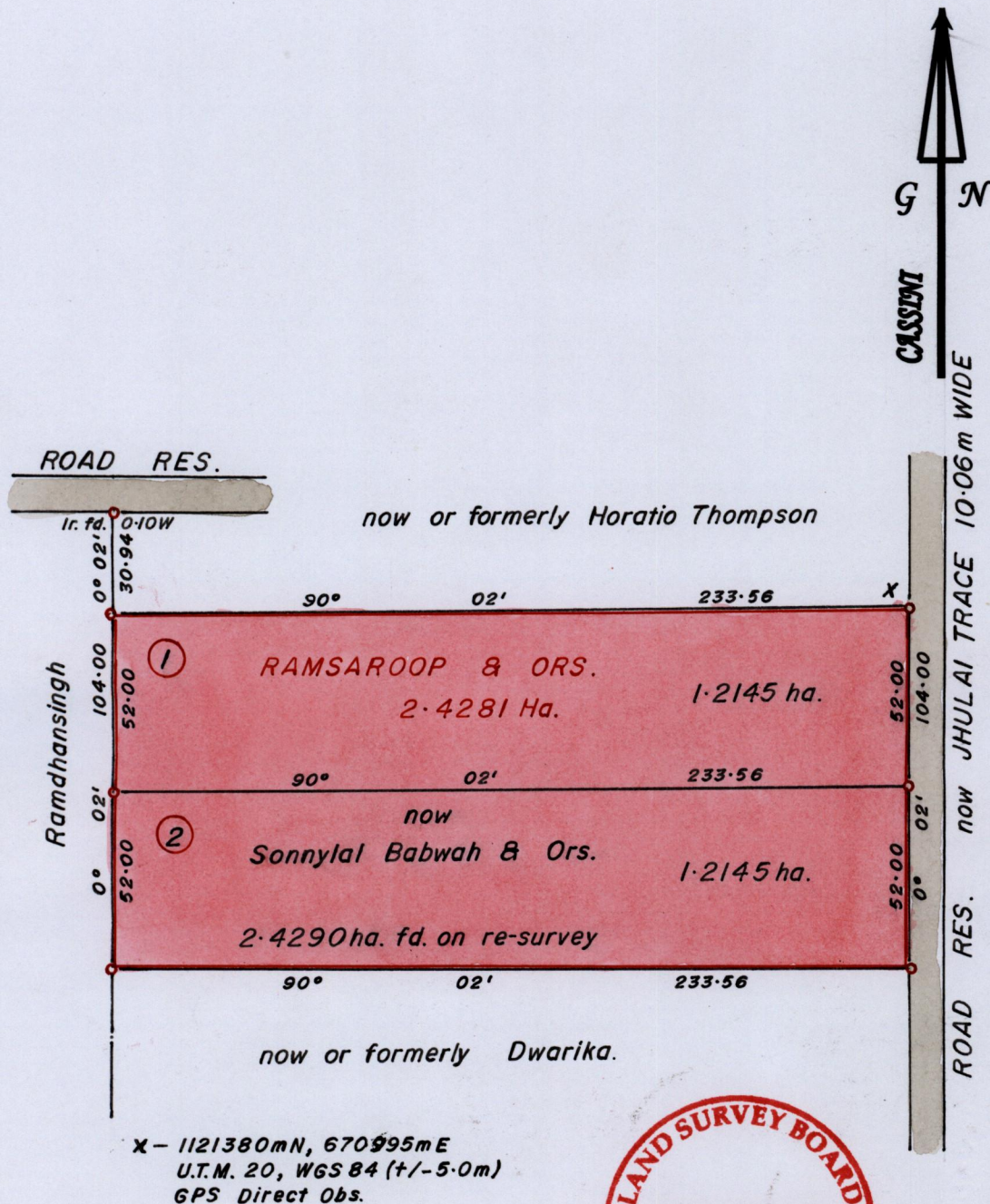


R.P.O Vol. 196 Fol. 499  
C.T. Vol. 1506 Fol. 461

Ward of Siparia.  
County of St. Patrick.  
Cadastral Sheet G.18.C.73C  
1/b

1414 / 194



Bk. 408 : 219  
Bk. 1053 : 314  
SCALE 1 : 2000.  
Distances are in METRES

Approved *[Signature]*  
Director of Surveys. 2008.7.9

○ Denotes Irons fd. except otherwise stated  
Bearings are Cassini Grid based on Solar Observations.

**PLAN of 2 Parcels of land coloured in PINK in the Ward of Siparia.  
Containing together two point four two nine zero hectares.  
Re-surveyed by me, with due authority, in July 2007.  
In accordance with Reg. 25(1) of the Land Surveyors' Regulations 1998,  
I certify that this plan is correct.**

Checked by *[Signature]*

*[Signature]*  
31<sup>st</sup> August 2007

Entered ..... Trinidad and Tobago Land Surveyor ..... 2007.