

1414

189

R.P.O. Vol. 125 Fol. 667

Ward of Siparia

C.T. Vol. 3584 Fol. 219

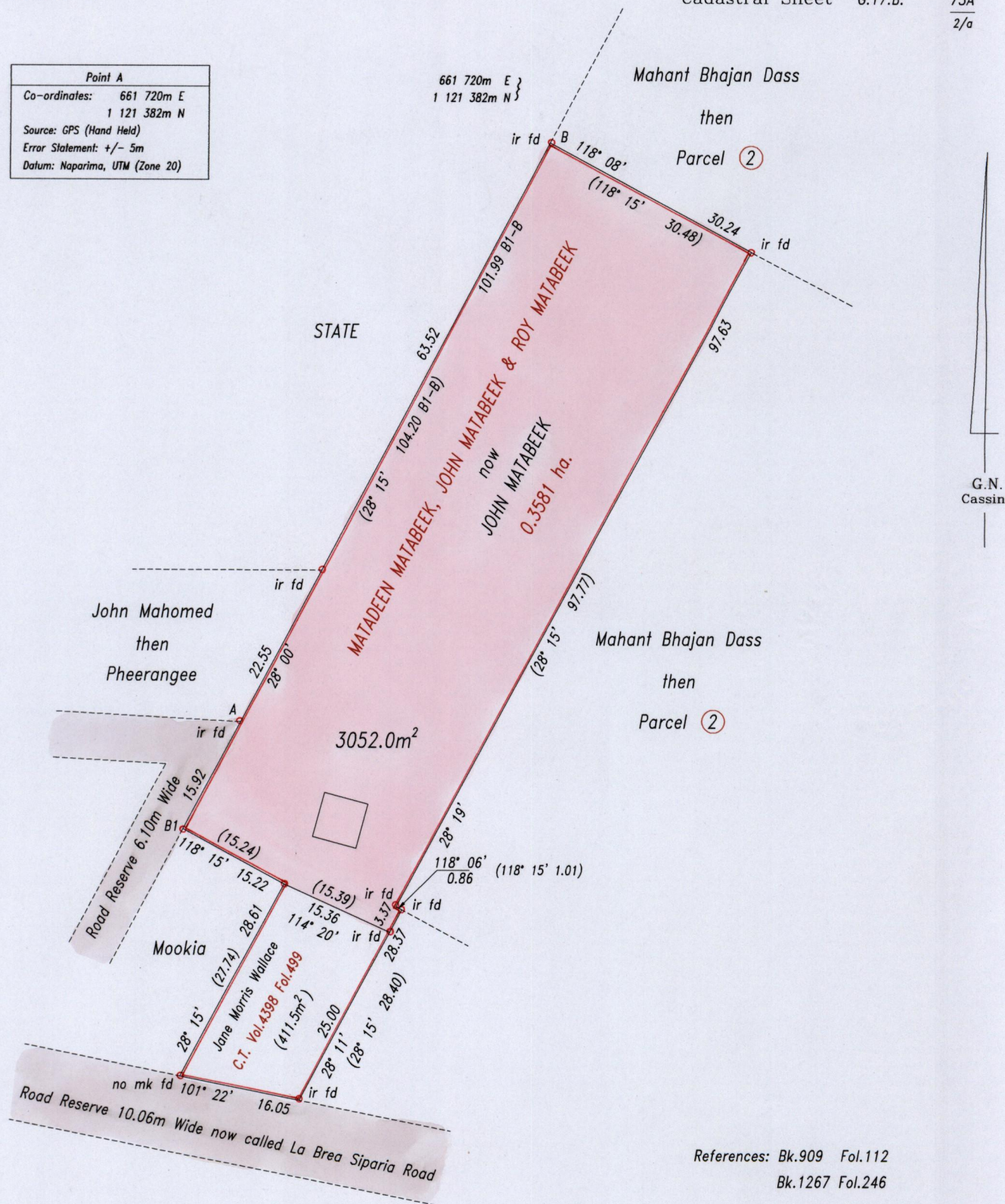
County of St. Patrick

U.P.I.N. No.:

Cadastral Sheet G.17.B.

73A
2/a

Point A	
Co-ordinates:	661 720m E 1 121 382m N
Source:	GPS (Hand Held)
Error Statement:	+/- 5m
Datum:	Naparima, UTM (Zone 20)



References: Bk.909 Fol.112
Bk.1267 Fol.246

Approved
[Signature]
Director of Surveys 2008.7.9

SCALE 1: 750

Distances are in metres

○ Denotes iron put except otherwise stated

Bearings are Cassini Grid based on Solar Observations

PLAN of a parcel of land coloured pink in the Ward of Siparia
Containing three thousand and fifty two point zero square metres
Surveyed by me, with due authority, in April 2007

In accordance with Regulation 25(1) of the Land Surveyors' Regulations 1998, I certify that this plan is correct.

Checked by *[Signature]*
Entered

[Signature]
Trinidad & Tobago Land Surveyor 22/2/2008

