

1414

1414

133

R.P.O. Vol. 424 Fol. 587

C.T. Vol. 2110 Fol. 57

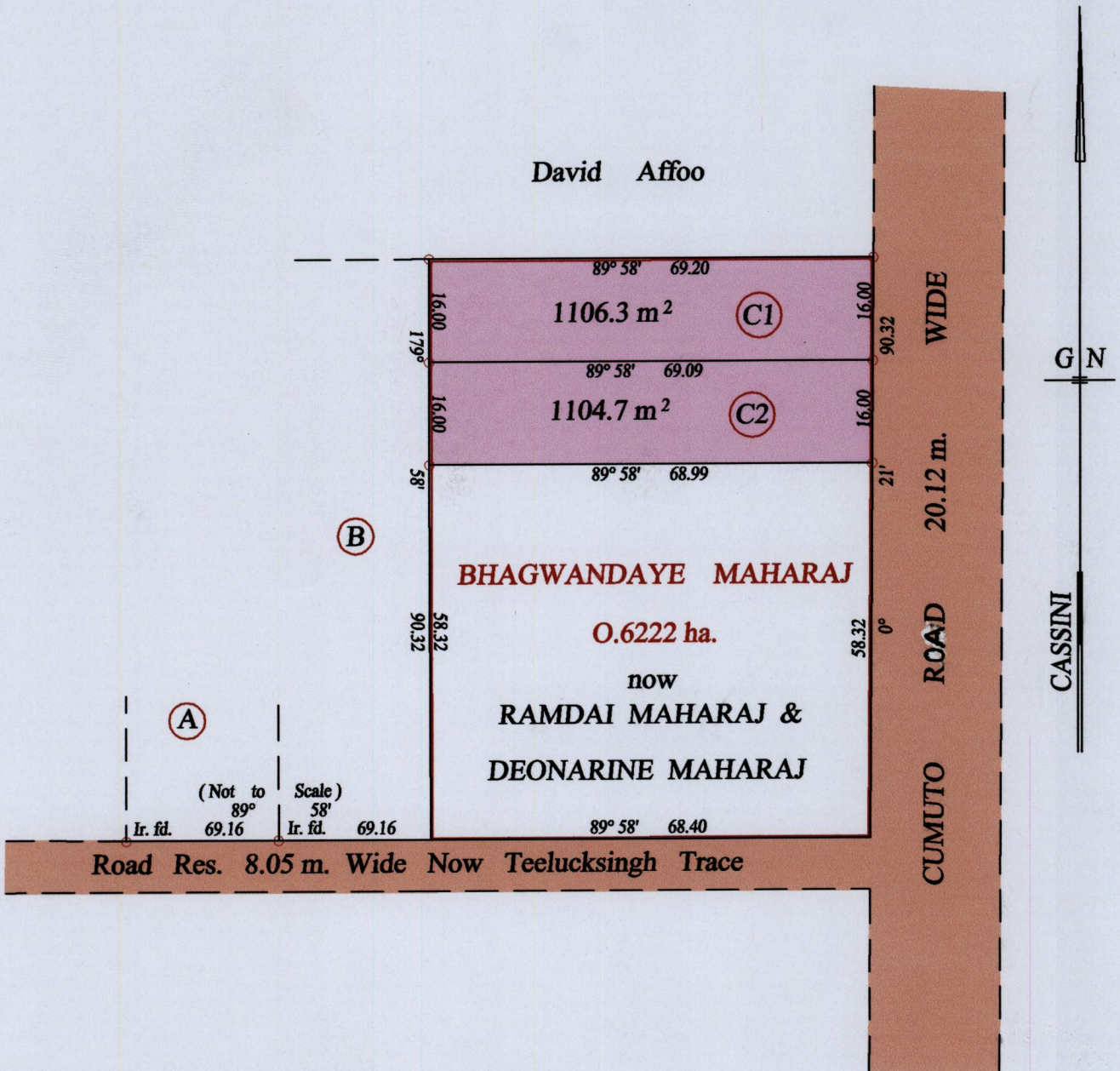
VOL 4992 FOL. 361

Ward of Savana Grande

County of Victoria

Cadastral Sheet (G.14.D) 64.E.

1/a



Approved *[Signature]*
 Director of Surveys
 2507.10.07

Vide Bk. 1005 fol. 207

o Denotes Iron put except stated otherwise.

SCALE : 1:1000

Note: Bearings are cassini grid based on solar observations Distances are in metres

PLAN of 2 Parcels of land coloured pink in the Ward of Savana Grande
 Containing together two thousand two hundred and eleven square metres
 Surveyed by me, with due authority, in September 2004

In accordance with Regulation 25 (1) of the Land Surveyors' Regulations 1998,
 I certify that this plan is correct.

Checked by *[Signature]* *[Signature]*
 4/10/07

Entered on Trinidad & Tobago Land Surveyor ... 31.07.2007

