

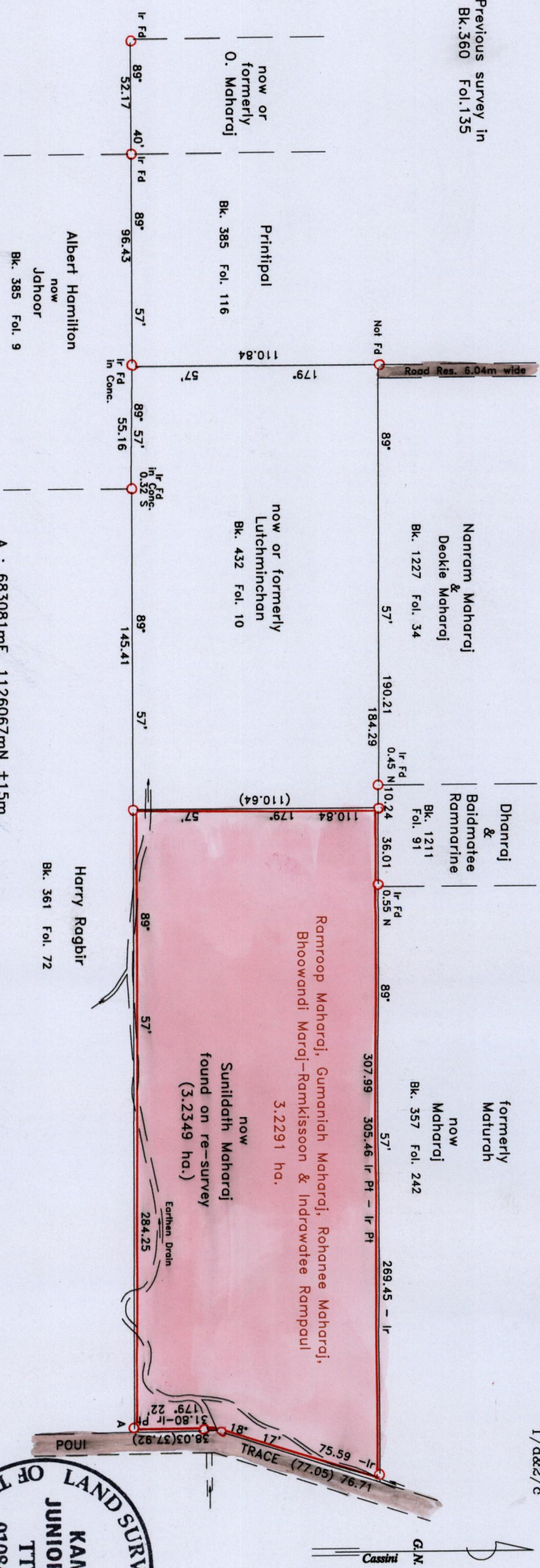
1600

R.P.O. Vol. 200 Fol. 205  
C.T. Vol. 3304 Fol. 391

U.P.I.N. No. ....

Ward of Savana Grande  
County of Victoria  
Cadastral Sheet 64E (G.15.E)  
1/d&2/c

Previous survey in  
Bk. 360 Fol. 135

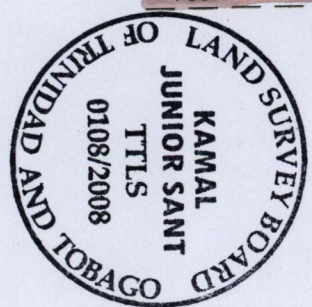


A : 683081mE, 1126067mN ±15m

Scale 1 : 2,500

Distances are in metres

○ Denotes iron put unless otherwise stated



Approved by *Yvonne Denny*  
Director of Surveys

Coordinates are Naparima Datum, UTM Projection, Zone 20 North derived from direct GPS observation.  
Bearings are Cassini grid based on solar observations.  
PLAN of a parcel of land coloured pink in the Ward of Savana Grande.  
Containing Three point Two Three Four Nine hectares. Surveyed by me with due authority, on 4&6th June, 2007.  
In accordance with Regulation 25(1) of the Land Surveyors' Regulations 1998, I certify that this plan is correct.

Checked by *Arnel 29/14/08*

Entered by .....

*Kamal S. Sant*

Trinidad & Tobago Land Surveyor 14<sup>th</sup> March, 2008.

1414