

R.P.O. Vol. 96 Fol. 105

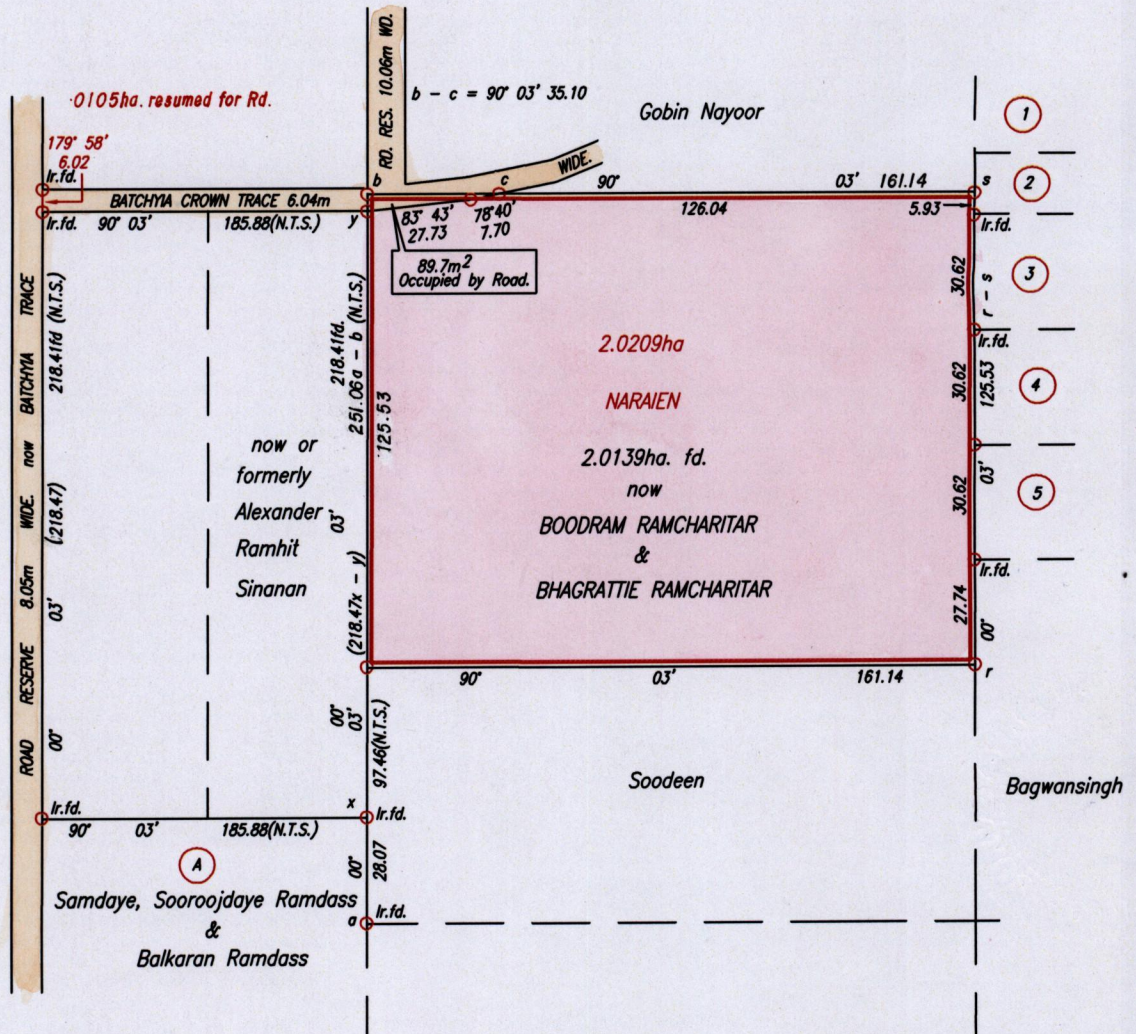
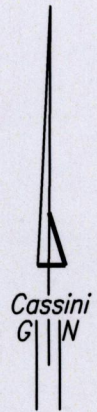
C.T. Vol. Fol.

Cadastral Sheet G.13.E. 63E
2/d

Ward of Siparia

County of St.Patrick.

- Vide Bk. 1256 fol. 147
- Vide Bk. 1277 fol. 88
- Vide Bk. 720 fol. 248
- Vide Bk. 391 fols. 18, 82 & 91
- Vide Bk. 725 fol. 218



Approved *[Signature]*
 Director of Surveys
 2008-4-24



○ Denotes Iron put except otherwise stated.
 Bearings are Cassini Grid based on Solar Observations.

SCALE 1:2000
 Distances are in Metres

PLAN of a Parcel of land coloured pink in the Ward of Siparia
 Containing two point zero two zero nine hectares
 Redefined by me, with due authority, in August, 2007
 In accordance with Regulation 25(1) of the Land Surveyors' Regulations 1998,
 I certify that this plan is correct.

Checked by *[Signature]* *[Signature]*

Entered Trinidad & Tobago Land Surveyor 8th August 2007