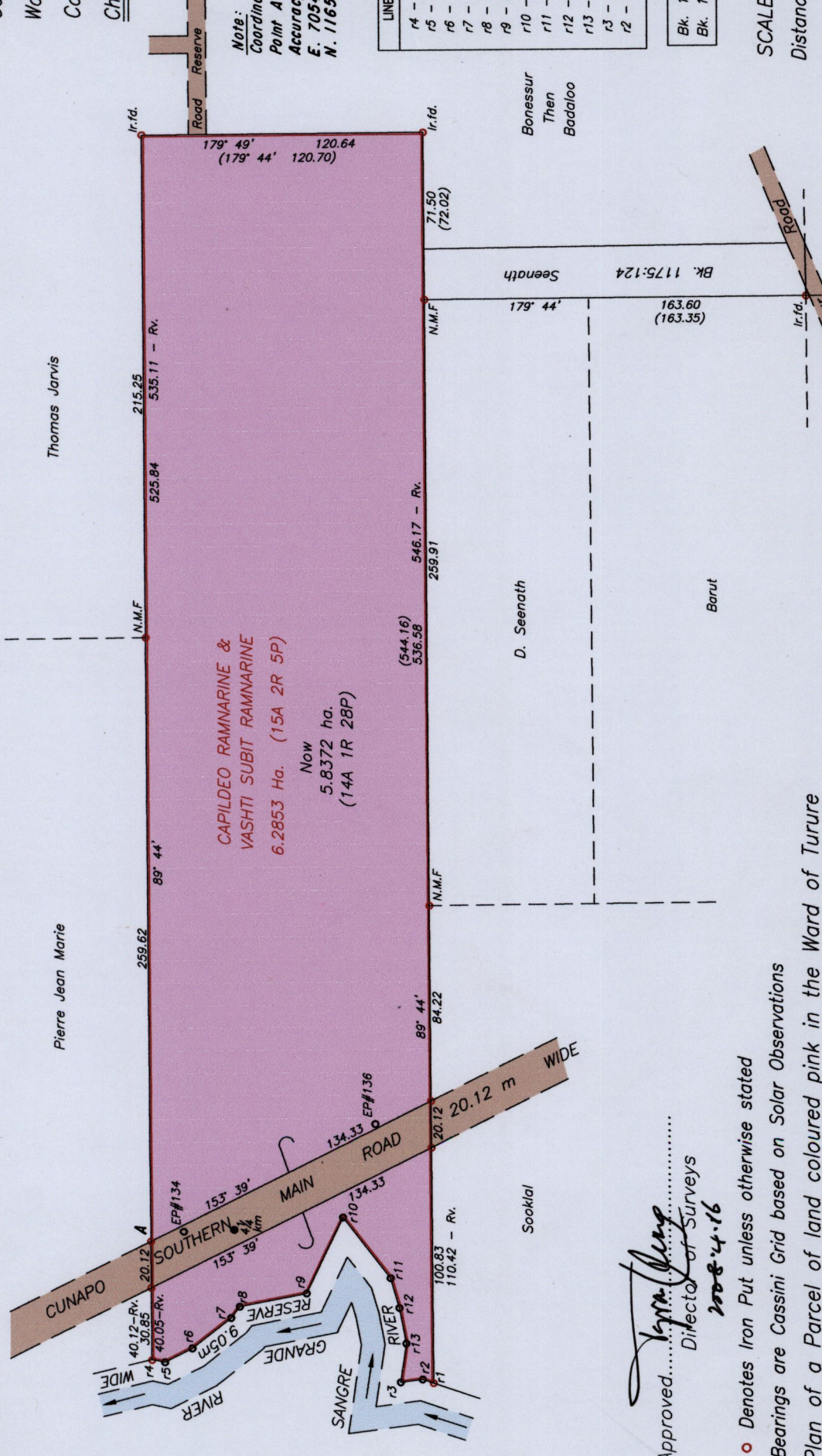
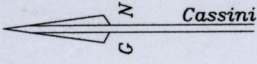


Ward of Turure
 County of St. Andrew
Cheeyou, Sangre grande



Note:
 Coordinates obtained by Hand Held G.P.S. (Naparima U.T.M. 20)
 Point A
 Accuracy ± 8m.
 E. 705423
 N. 1165276



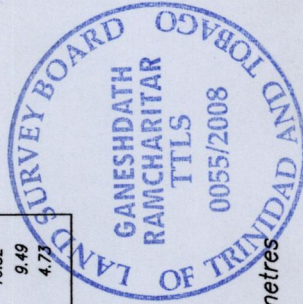
1414

LINE	BEARING	DIST.
r4 - r5	192° 16'	5.69
r5 - r6	153° 30'	13.14
r6 - r7	142° 10'	21.02
r7 - r8	127° 56'	6.17
r8 - r9	169° 17'	29.20
r9 - r10	115° 37'	36.33
r10 - r11	232° 29'	33.39
r11 - r12	253° 50'	13.41
r12 - r13	259° 19'	15.59
r13 - r3	278° 23'	16.82
r3 - r2	172° 58'	9.49
r2 - r1	189° 42'	4.73

Bk. 156:117
 Bk. 1175:124

SCALE 1/2500

Distances are in metres



145

Ganeshdath Ramcharitar

Trinidad & Tobago Land Surveyor.....2008
 17/13

Approved.....
 Director of Surveys
 2008-4-16

○ Denotes Iron Put unless otherwise stated
 Bearings are Cassini Grid based on Solar Observations
 Plan of a Parcel of land coloured pink in the Ward of Turure
 Containing five point eight three seven two hectares
 Surveyed by me, with due authority, in January 2008 for Capildeo Rammarine & Vasti Subit Rammarine
 In accordance with Regulation 25 (1) of the Land Surveyors' Regulations 1998,
 I certify that this plan is correct.

Checked By...MMM...14/04/08 Entered On.....