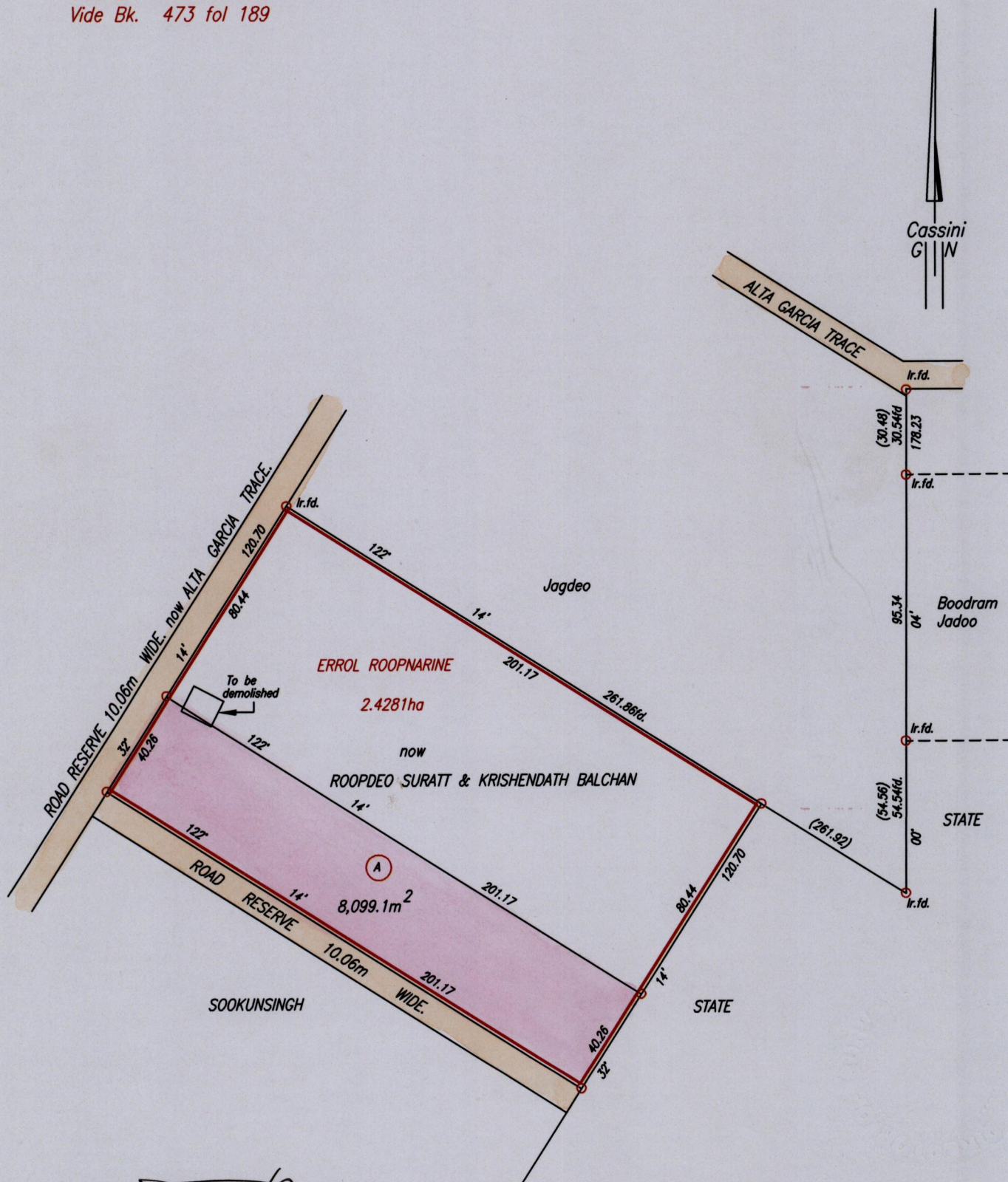


R.P.O. Vol. 4119 Fol. 293

C.T. Vol. 137 Fol. 449

Cadastral Sheet G.12.L. 63E
Ward of Siparia 3/B
County of St.Patrick.

Vide Bk. 1175 fol 130
Vide Bk. 473 fol 189



Approved *[Signature]*
Director of Surveys
2008.3.17

SCALE 1:2000
Distances are in Metres

○ Denotes Iron put except otherwise stated.
Bearings are Cassini Grid based on Solar Observations.

PLAN of a Parcel of land coloured pink in the Ward of Siparia
Containing eight thousand and ninety nine point one square metres.
Surveyed by me, with due authority, in August, 2007
In accordance with Regulation 25(1) of the Land Surveyors' Regulations 1998,
I certify that this plan is correct.

Checked by *[Signature]* *[Signature]*
2008.3.5



Entered Trinidad & Tobago Land Surveyor 12th November .2007