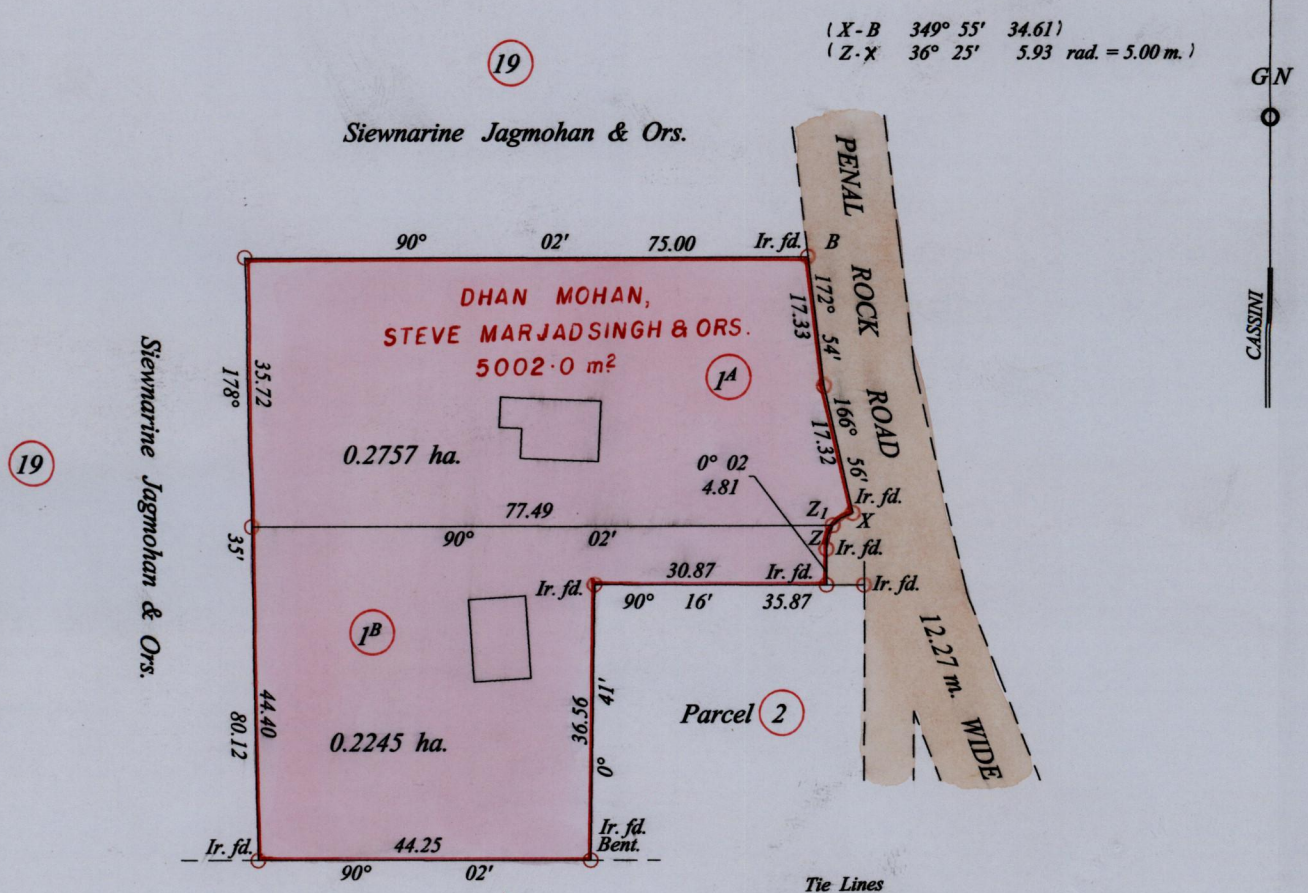


1414

130

R.P.O. Vol. 104 fol. 561
C.T. Vol. 4602 fol. 249

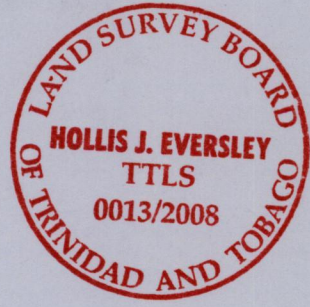
Ward of Siparia
County of St. Patrick
Cadastral Sheet (G. 18. B.) $\frac{73 C}{1/c}$



John James Halliday
then
Nash Williams and
Gladys Williams

Tie Lines

Z - Z ₁	14° 51'	3.25
Z ₁ - X	58° 33'	3.15



Plan D. C. 82
unregistered subdivision
Bk. 1249 Vol. 2 fol. 48

○ Denotes Iron Put Except Stated Otherwise

Approved *[Signature]*
Director of Surveys 2008.3.11

SCALE 1 : 1000

Bearings are Cassini Grid based on Solar Observations Distances are in Metres
PLAN of 2 Parcels of land coloured pink in the Ward of Siparia
Containing together zero point five zero zero two hectares.
Surveyed by me, with due authority in, October 2007
In accordance with Regulation 25 (1) of the Land Surveyors' Regulations 1998,
I certify that this plan is correct.

Checked by M.M. 21/2/08

[Signature]

Entered on

Trinidad & Tobago Land Surveyor 18th Feb 2007