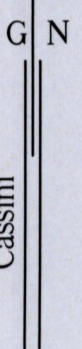
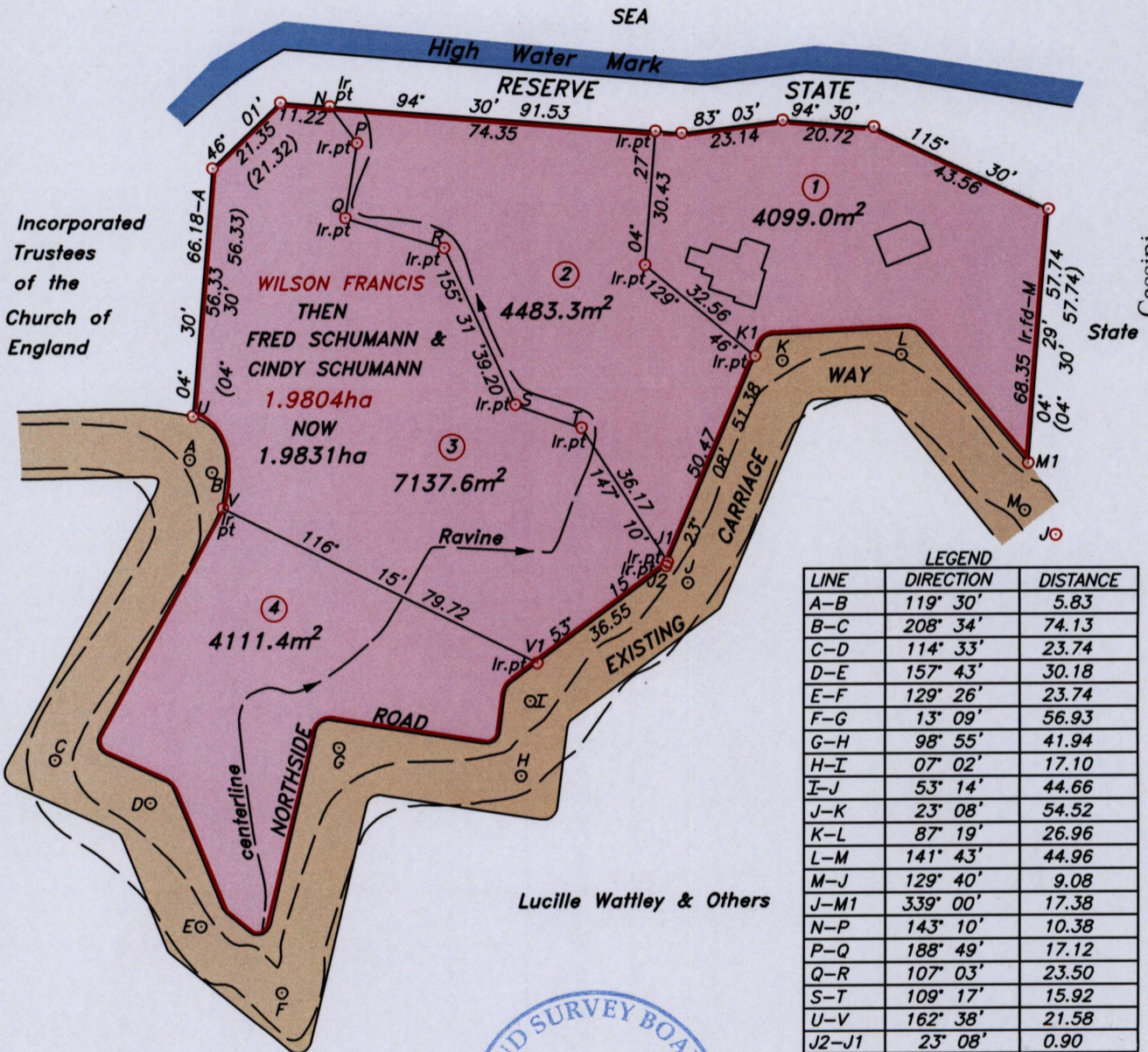


R.P.O Vol.311 Fol.163
C.T Vol.4045 Fol.107
U.P.R.N.....

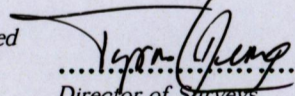
Cadastral Sheet I.9.E
Ward of Tobago
Parish of St. John
BLOODY BAY

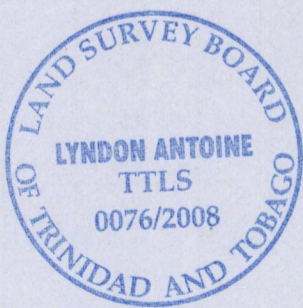
Vide Bk. 528 Fol. 163
S.O 165/12
S.O 166/67
Plan PA 162



LEGEND

LINE	DIRECTION	DISTANCE
A-B	119° 30'	5.83
B-C	208° 34'	74.13
C-D	114° 33'	23.74
D-E	157° 43'	30.18
E-F	129° 26'	23.74
F-G	13° 09'	56.93
G-H	98° 55'	41.94
H-I	07° 02'	17.10
I-J	53° 14'	44.66
J-K	23° 08'	54.52
K-L	87° 19'	26.96
L-M	141° 43'	44.96
M-J	129° 40'	9.08
J-M1	339° 00'	17.38
N-P	143° 10'	10.38
P-Q	188° 49'	17.12
Q-R	107° 03'	23.50
S-T	109° 17'	15.92
U-V	162° 38'	21.58
J2-J1	23° 08'	0.90

Approved 
 Director of Surveys
 2008-3-11



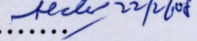
SCALE 1:1500

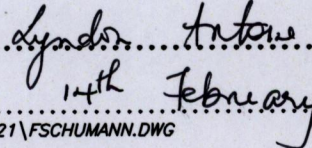
Bearings are grid based on solar observations

Distances are in metres

PLAN of 4 parcels of land coloured pink in the Ward of Tobago
 Containing together one point nine eight three one hectares.
 Surveyed by me, with due authority on 27th March 2006

In accordance with Regulation 25 (1) of the Land Surveyors' Regulations 1998, I certify that this plan is correct.

Checked by 
 Entered.....

Trinidad & Tobago Land Surveyor.....  14th February.....2008.
 Path: \\Server\S\S121\FSCHUMANN.DWG

	Ir.fd 10.62 M1 04° 29'	M 44.96	pg.pt 7.04	
		0.00	141° 43'	
		L	pg.pt	
①	6.79 24° 31'	26.96	10.18 204° 31'	
		0.00	87° 19'	
		K	pg.pt	
	7.13 Ir.pt 325° 13' K1 6.04	54.52 53.02	10.68 145° 14'	
②	6.05 Ir.pt J1	2.53 0.00		
		J	23° 08' pg.pt	
	6.25 Ir.pt J2 308° 11'	44.66	9.37 128° 11'	
③	6.05 Ir.pt V1	6.49 0.00		
		I	53° 14' pg.pt	
	6.57 300° 08'	17.10	9.84 120° 08'	
		0.00	07° 02'	
		H	pg.pt	
	8.69 322° 58'	41.94	13.01 142° 58'	
		0.00	98° 55'	
		G	pg.pt	
	8.24 326° 02'	56.93	12.35 146° 02'	
		0.00	13° 09'	
		F	pg.pt	
	11.44 341° 18'	23.74	17.15 161° 18'	
		0.00	129° 26'	
		E	pg.pt	
	6.23 53° 35'	30.18	9.33 233° 34'	
④		0.00	157° 43'	
		D	pg.pt	
	6.50 46° 08'	23.74	9.73 226° 08'	
		0.00	114° 33'	
		C	pg.pt	
	8.86 71° 34'	74.13	13.27 251° 34'	
	5.65 Ir.pt V1	5.92		
③	6.04 119° 30'	0.00	208° 34' pg.pt	
		B		
	6.04	5.83	9.05	
	8.05 Ir.fd U 04° 30'	0.00	7.04	
		A	119° 30'	

①

②

③

④

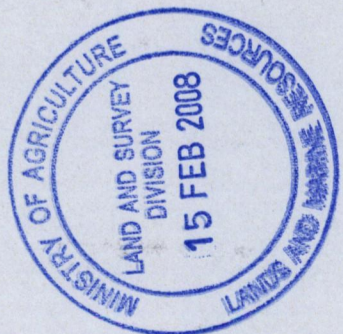
ROAD

SCHUMANN

FRED
NORTHSIDE

OLD

Others
&
Wattley
Lucille



14/1/20