

1414

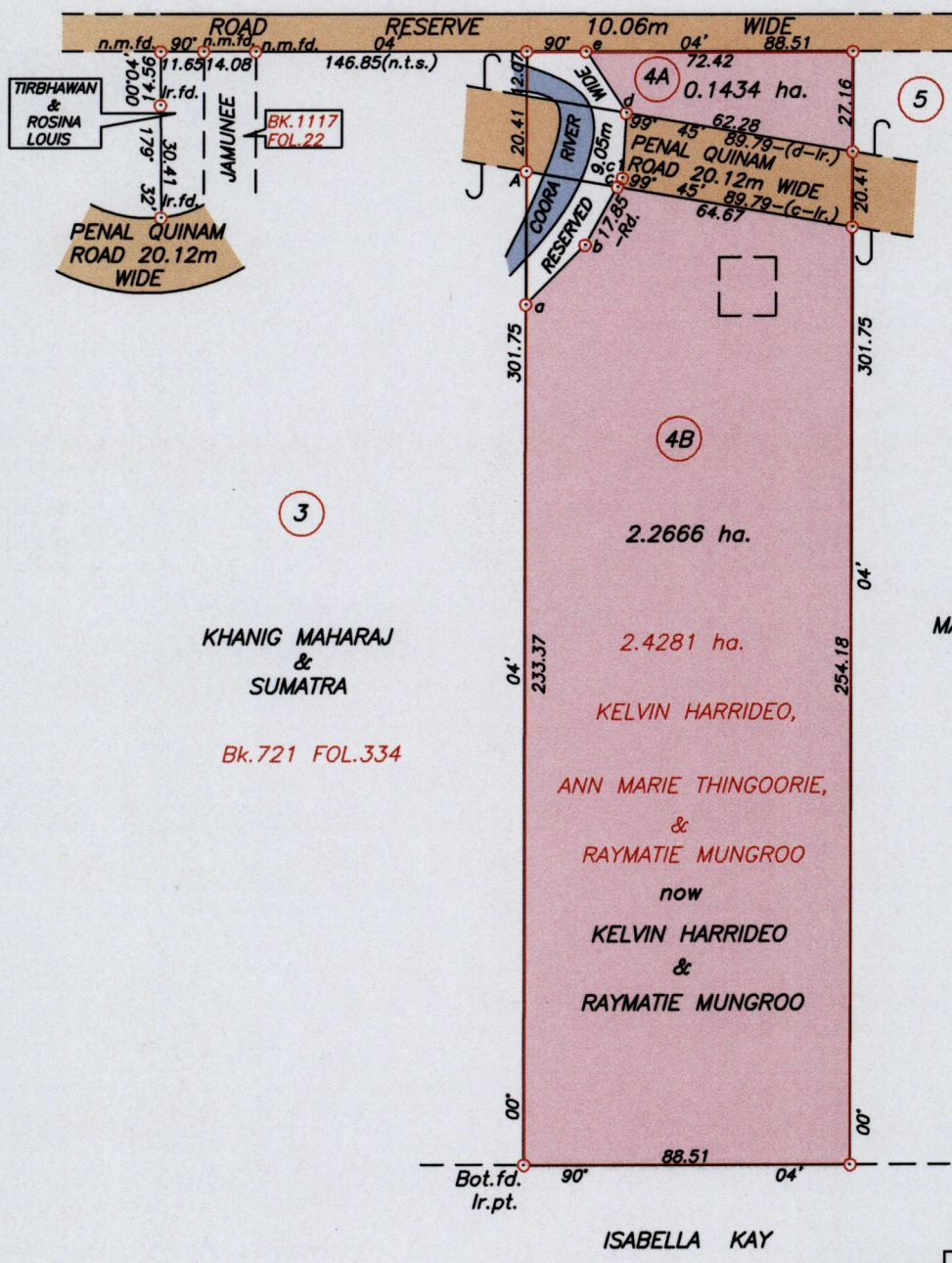
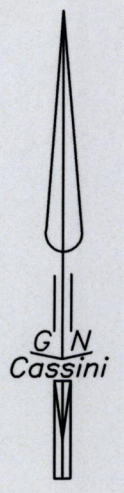
114

R.P.O. Vol. 212
C.T. Vol. 4,196

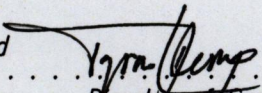
Fol.177
Fol.493

Cadastral Sheet G.17.L. 73B
Ward of Siparia 3/b
County of St. Patrick
Vide BK.721 FOL.335

1414/114



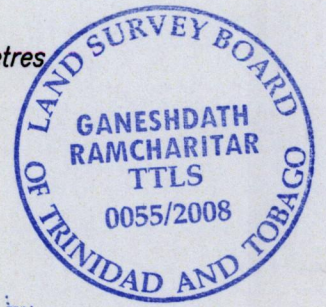
Line	Bearing	Dist.
a-b	45° 04'	22.75
b-c1	29° 07'	20.72
c1-d	03° 14'	18.14
e-d	145° 34'	19.52
a-lr.pt.	00° 04'	35.92

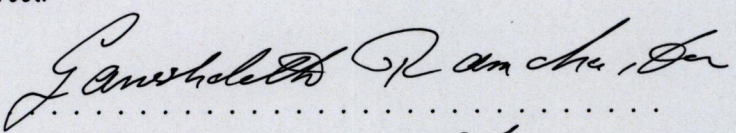
Approved 
Director of Surveys
2008-2-15

Co-ordinates obtained by Hand Held G.P.S. (WGS84 U.T.M. Zone)
Point A
Accuracy ± 7m
E 665313.00m
N 1117859.00m

○ Denotes Iron put except otherwise stated
Bearings are Cassini Grid based on Solar Observations
Plan of 2 Parcels of land coloured pink in the Ward of Siparia
Containing together two point four zero nine eight hectares
Surveyed by me, with due authority, on 2nd & 16th February & 8th March 2006
In accordance with Regulation 25 (1) of the Land Surveyors' Regulations 1998,
I certify that this plan is correct.

SCALE 1/2000
Distances are in metres



Entered on
Checked by  8/2 08
Trinidad & Tobago Land Surveyor 20 . . .