

R.P.O. Vol. 16 Fol. 567

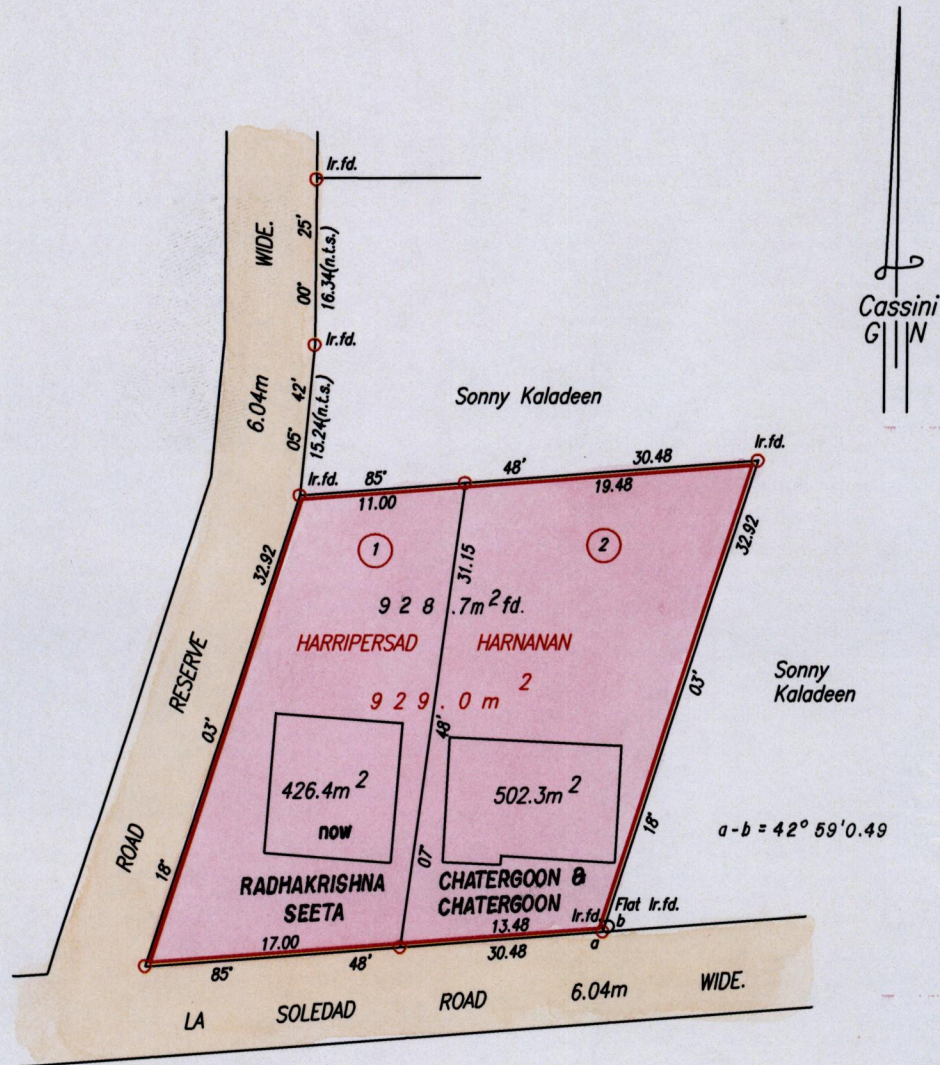
C.T. Vol. 2709 Fol. 85

Vide Bk.1128 fol 28

Cadastral Sheet D.22.B. $\frac{43F}{3/d \& 3/c}$

Ward of Pointe - a - Pierre

County of Victoria



Approved

[Signature]
 Director of Surveys
 2008-2-15

SCALE 1:500

Distances are in metres

○ Denotes Iron put except otherwise stated
 Bearings are Cassini Grid based on Solar Observations
 PLAN of 2 Parcels of land coloured pink in the Ward of Pointe - a - Pierre
 Containing together nine hundred and twenty eight point seven square metres.
 Surveyed by me, with due authority, in July, 2007
 In accordance with Regulation 25 (1) of the Land Surveyors' Regulations 1998,
 I certify that this plan is correct.

Checked by *[Signature]*

[Signature]
 Trinidad & Tobago Land Surveyor.

Entered on

Trinidad & Tobago Land Surveyor. *19th October* 2007.

PATH = EY700 D:\Drawings07\HHarnanan.dwg.

