

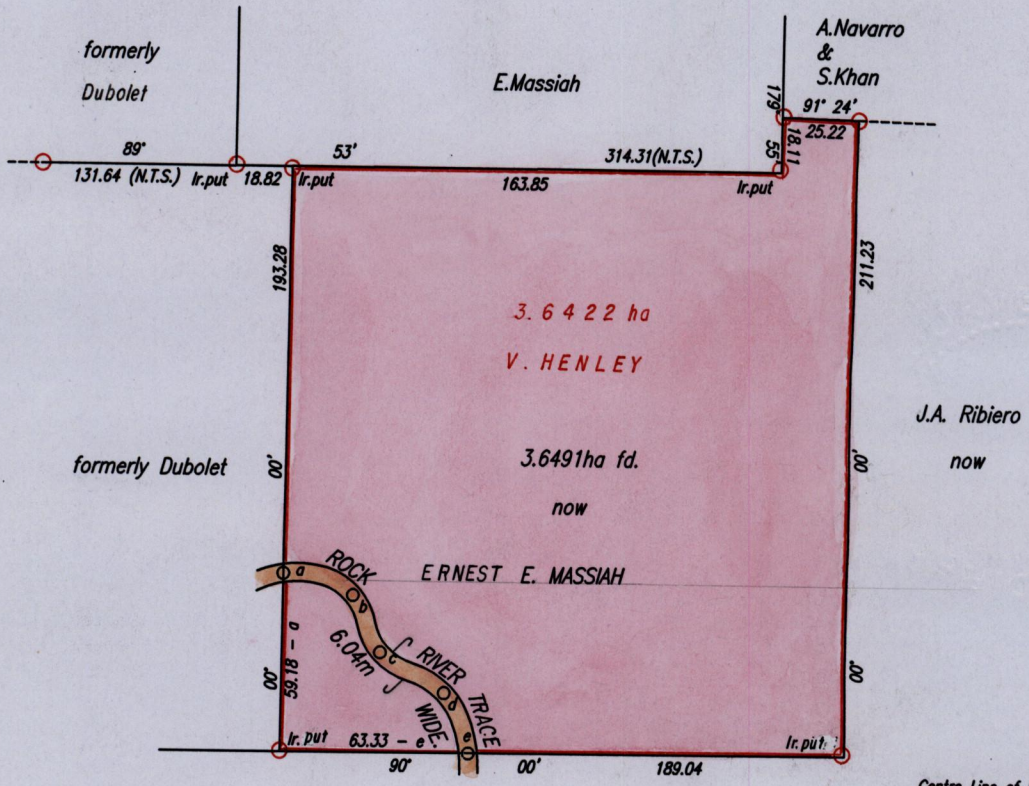
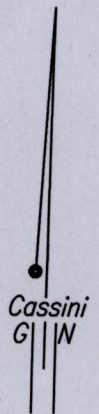
1414

1414/108

1088

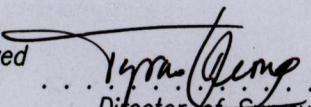
Cadastral Sheet G.20.E. 74B  
Ward of Moruga 2/b  
County of Victoria.

R.P.O. Vol. 43 Fol. 109  
C.T. Vol. 1105 Fol. 151  
C.T. Vol. 3721 Fol. 476  
Bk. 710 fol. 107



Centre Line of ROCK RIVER TRACE  
6.04m WIDE.

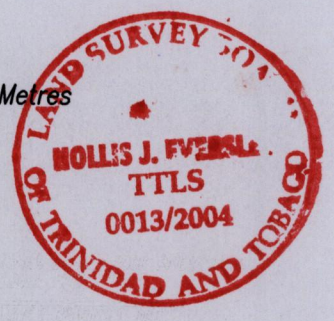
LINE	BEARING	DIST.
ab	106° 41'	24.67
bc	153° 28'	21.15
cd	121° 23'	25.46
de	156° 48'	21.60

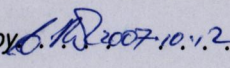
Approved   
Director of Surveys  
2004-2-13

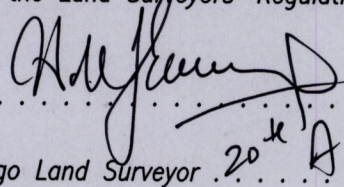
SCALE 1:2500  
Distances are in Metres

- Denotes Iron found except otherwise stated.
- Denotes Nail put

Bearings are Cassini Grid based on Solar Observations.  
PLAN of a Parcel of land coloured pink in the Ward of Moruga  
Containing three point six four nine one hectares.  
Surveyed by me, with due authority, in May, 2004  
In accordance with Regulation 25(1) of the Land Surveyors' Regulations 1998,  
I certify that this plan is correct.



Checked by  2007-10-12

Entered . . . . . Trinidad & Tobago Land Surveyor  20<sup>th</sup> August . . . . . 2004