

1395

96

Process ID# 43030  
R.P.O Vol. 87 Fol. 295  
C.T. Vol. 928 Fol. 19

Ward of Siparia  
County of St. Patrick  
Cadastral Sheet (G.13.E.), 63E  
2/d

Coordinates

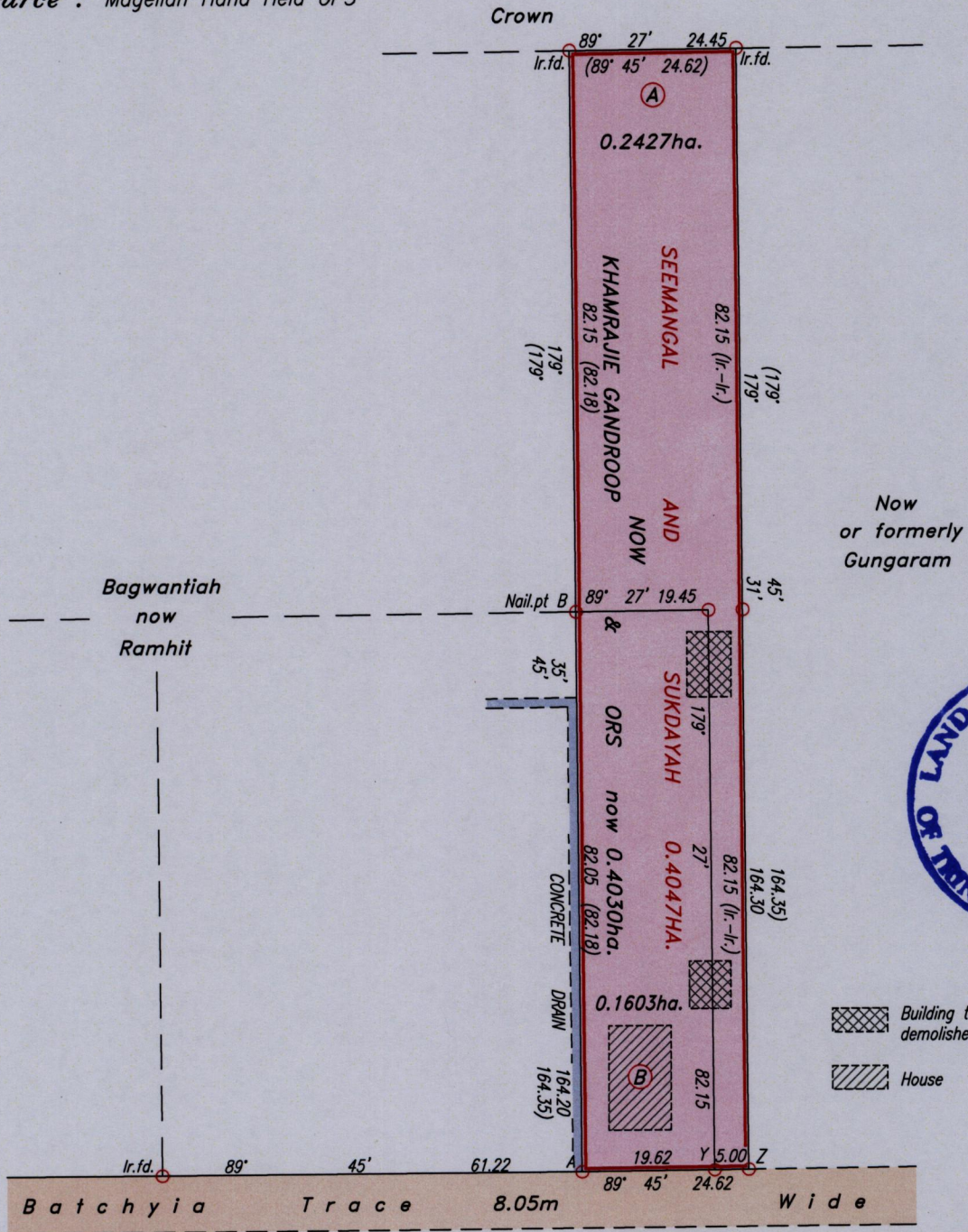
Ir.f.d. A : N 1124649  
E 668816

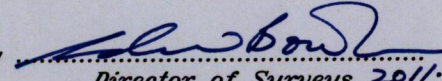
Parcel Address: Batches Trace, Penal

Error Statement : ±4m

Datum Definition : U.T.M. Zone 20 Naparima

Source : Magellan Hand Held GPS



Approved by   
Director of Surveys 2011.12.16

Ref.: Bk. 1017 Fol. 5  
SCALE 1:1000

○ Denotes Iron put except stated otherwise.

Note: Bearings are U.T.M. Grid based on solar observations.

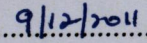
Distances are in metres.

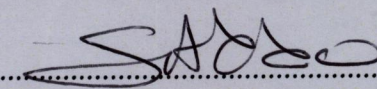
Plan of two Parcels of land coloured pink in the Ward of Siparia

Containing together zero point four zero three zero hectare

Surveyed by me, with due authority, in September 2009

In accordance with Regulation 25(1) of the Land Surveyors' Regulations 1998,  
I certify that this plan is correct.

Checked by  9/12/2011

  
Trinidad & Tobago Land Surveyor 10 Nov 2011

Entered OMS 23-01-2013  
