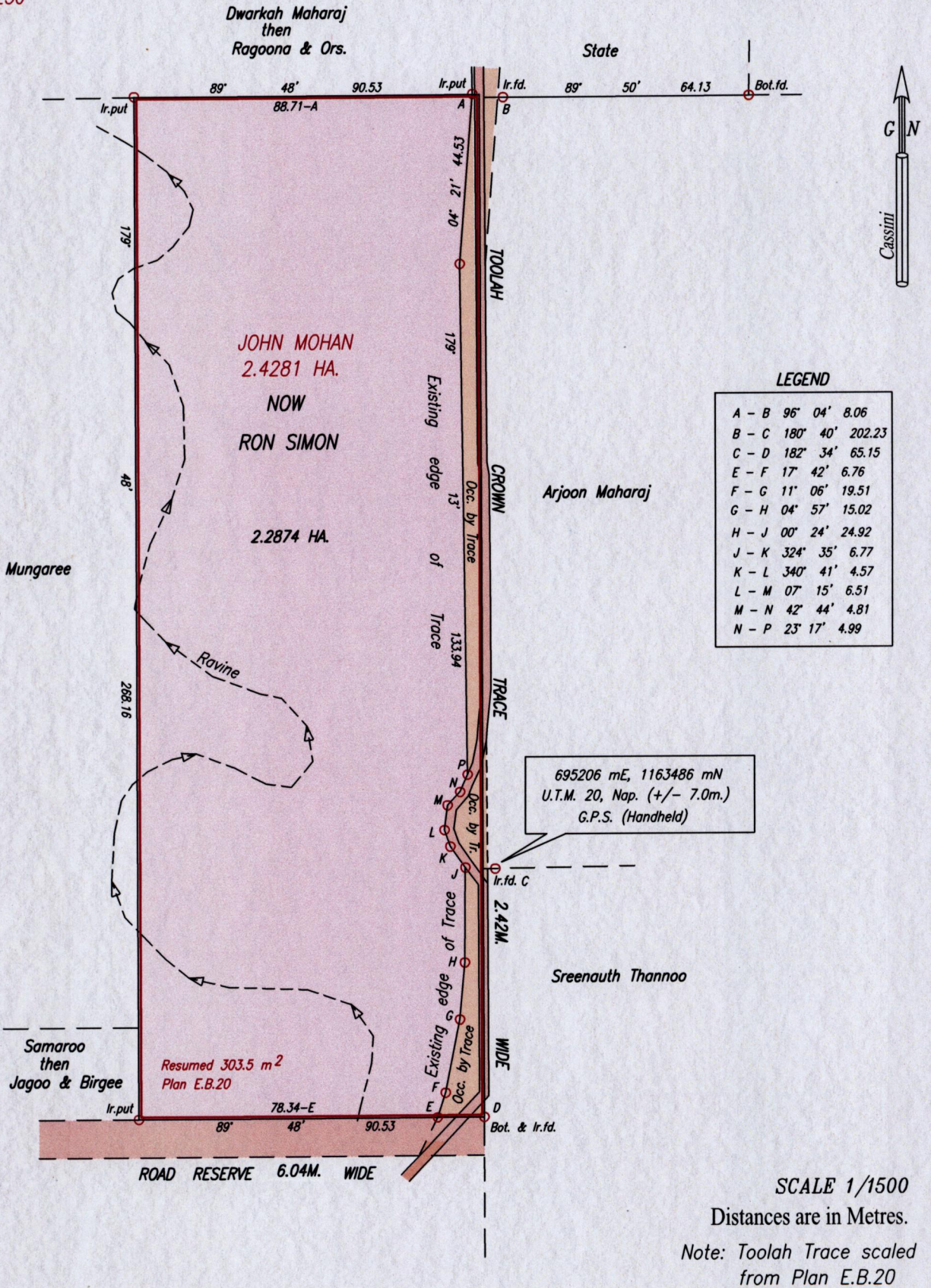


R.P.O. Vol. 67 Fol. 197
 C.T. Vol. 4836 Fol. 357
 Plan E.B.20
 Bk.7 Fol.250

1395

Ward of Tamana
 County of St. Andrew
 Cadastral Sheet D.10.D. 35A
 Caratal 4/a



Approved. *[Signature]*
 Director of Surveys 2011.10.5

Bearings are Cassini Grid based on solar Observations

PLAN of a Parcel of land coloured pink in the Ward of Tamana
 Containing two point two eight seven four hectares
 Surveyed by me, with due authority, in December, 2010.

In accordance with Regulation 25 (1) of The Land Surveyors' Regulations 1998,
 I certify that this plan is correct.

Checked by. *[Signature]* 2011.09.20

Entered on Trinidad & Tobago Land Surveyor. *[Signature]* 21st February 2011

