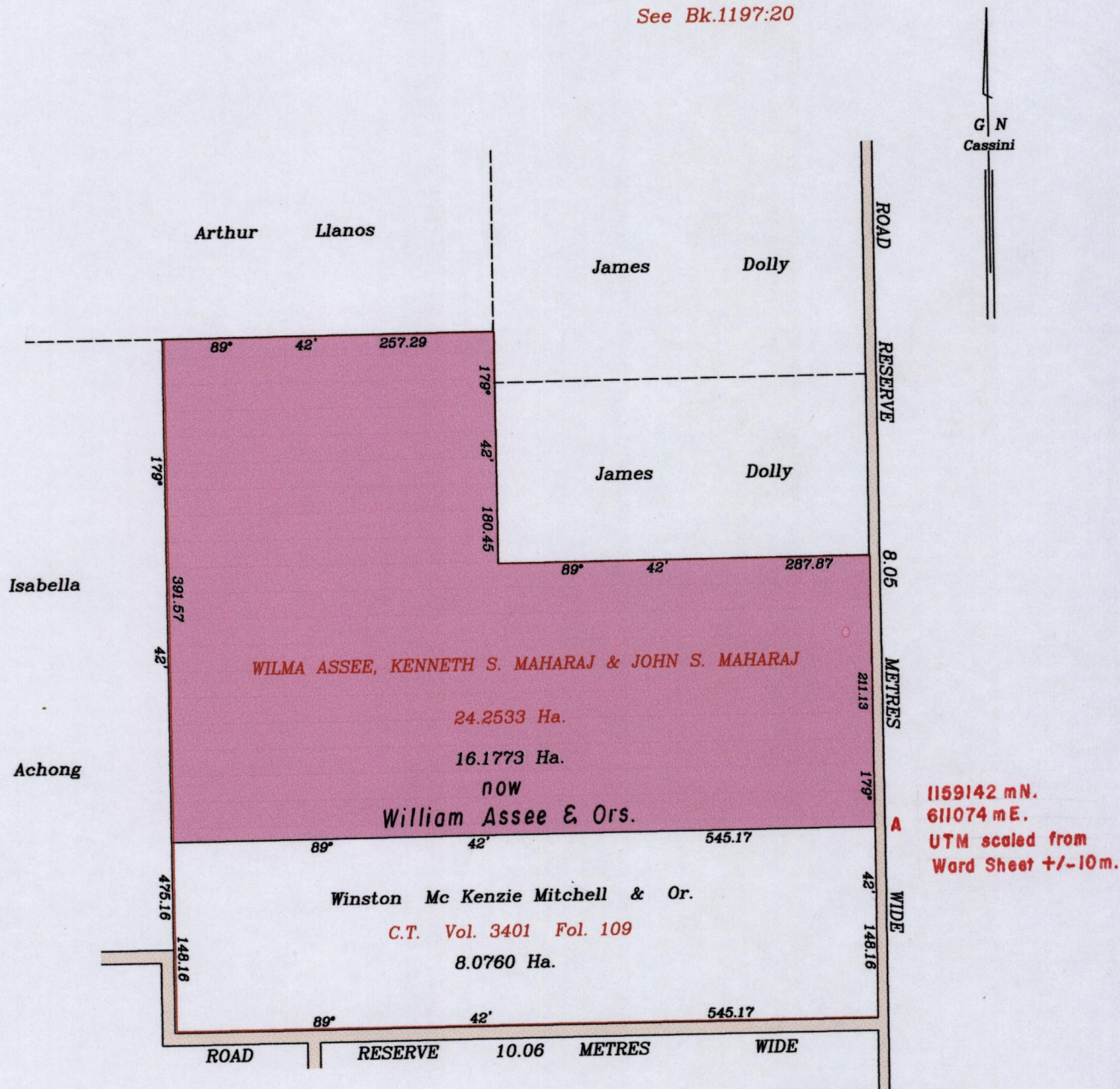


R.P.O. Vol. 91 Fol. 195  
 C.T. Vol. 3361 Fol. 27

Cadastral Sheet E.8.M. 36D  
 1/d & 2/c  
 Ward of Turure  
 County of St. Andrew

See Bk.121:203  
 See Bk.1197:20



Approved [Signature]  
 Director of Surveys  
 2011.12.9

SCALE: 1/5000

Distances are in metres

To obtain compass bearings add 18 minutes

This is a true copy of a diagram containing Twenty-Four Point Two Five Three Three Hectares originally transferred to WILMA ASSEE & Ors. showing a portion coloured pink and containing Sixteen Point One Seven Seven Three Hectares being the remainder after one previous transfer, of other portion of the land. In accordance with Regulation 25 (1) of the Land Surveyors' Regulations 1998, I certify that this plan is correct.

Entered on [Signature]  
 Checked by [Signature]  
 Trinidad & Tobago Land Surveyor [Signature] 24<sup>th</sup> October 2011