

1395

75

Process JD# 43040

R.P.O. Vol. Fol.

C.T. Vol. 2967 Fol. 17

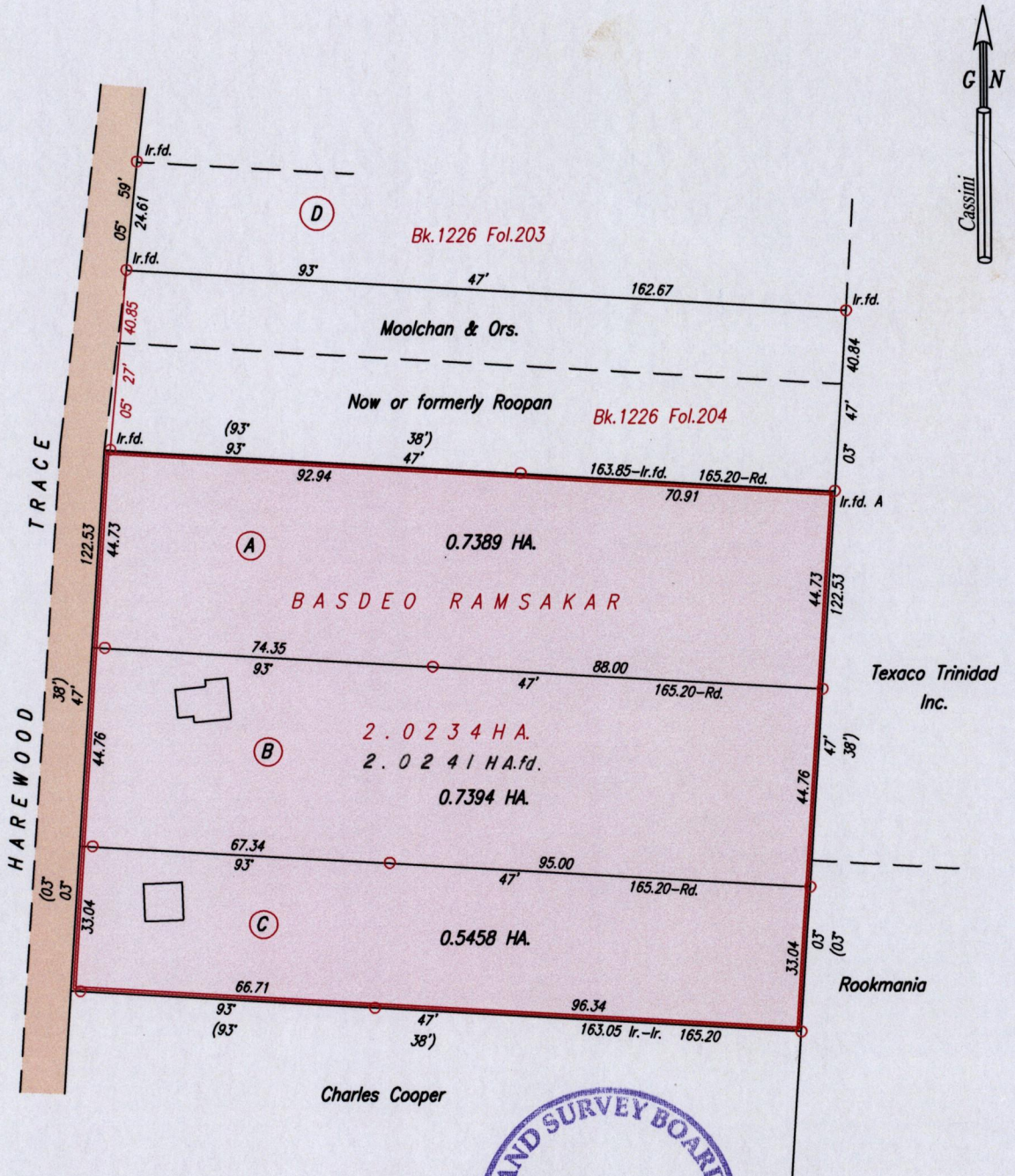
Vide Bk.1114 Fol.171

Ward of Naparima

County of Victoria

Cadastral Sheet G.8.P. 63C  
4/d

MONKEY TOWN



SCALE 1/1500  
Distances are in Metres.

Iron A

673382 mE, 1128165 mN U.T.M. 20, Nap. (+/- 4.0m.) G.P.S. (Handheld)
---

Approved *[Signature]*  
Director of Surveys 2011.12.5

o Denotes Iron put unless otherwise stated

Bearings are Cassini Grid based on solar Observations

PLAN of three Parcels of land coloured pink in the Ward of Naparima  
Containing together two point zero two four one hectare  
Surveyed by me, with due authority, in July, 2011.

In accordance with Regulation 25 (1) of The Land Surveyors' Regulations 1998,

I certify that this plan is correct.

Checked by *[Signature]* 2/11/11

*[Signature]*

Entered on *[Signature]* 24-01-2013 Trinidad & Tobago Land Surveyor.....2011