

1395

69

PROCESS ID # 42662

R.P.O. Vol. 23 Fol. 423

C.T. Vol. 4563 Fol. 341

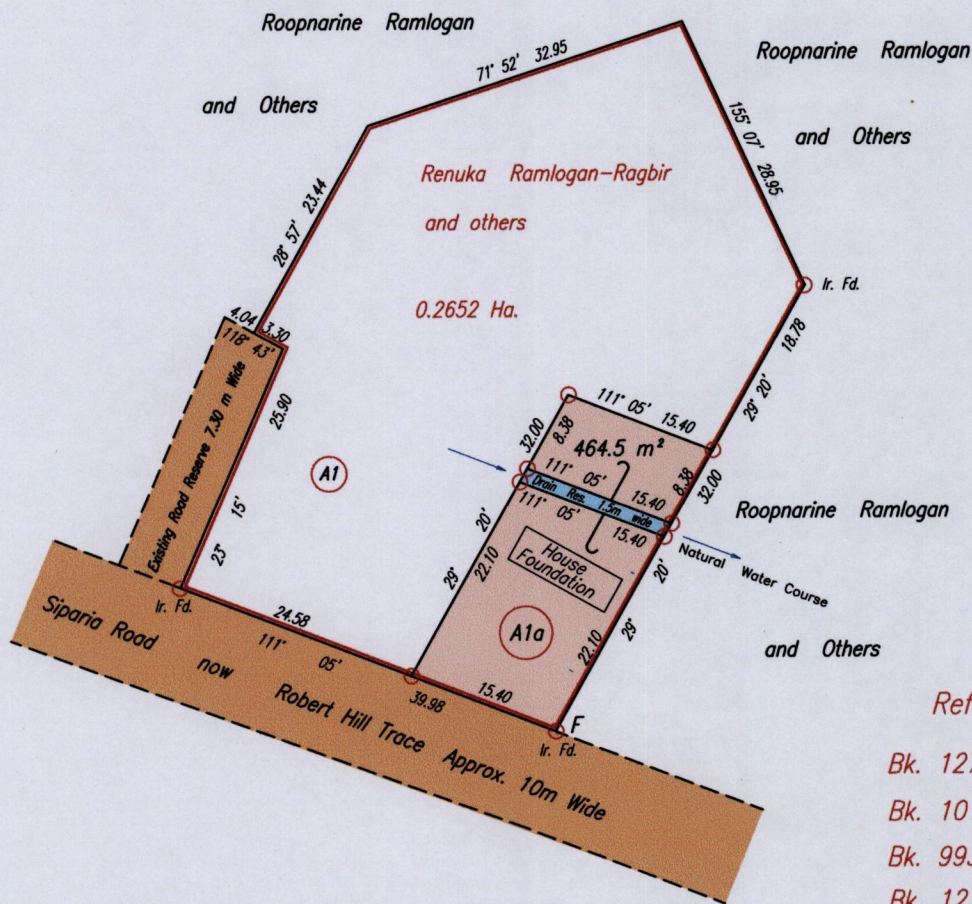
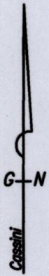
Ward of Siparia

County of St Patrick

Cadastral Sheet G.12.N. 63D  
4/d

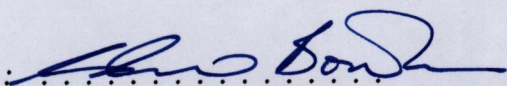
Point	U.T.M. WGS84 Coordinate		Accuracy
	Northing/m	Easting/m	
F	1123295	662600	± 5 m

Coordinates obtained by observation using hand held GPS.



References

- Bk. 1279 fol. 12
- Bk. 1012 fol. 34
- Bk. 993 fol. 33
- Bk. 1238 fol. 95
- Orig. Bk. 461 fol. 87

Approved:   
 Director of Surveys 2011.11.30

SCALE 1:750

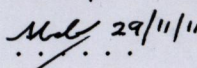
o denotes iron put except otherwise stated.

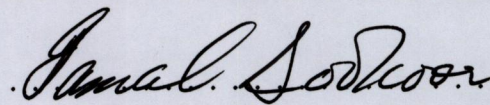
Bearings are Cassini Grid based on solar observations.

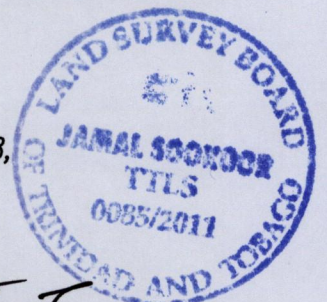
Distances are in Metres

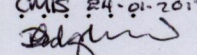
Plan of a Parcel of land coloured pink in the Ward of Siparia  
 Containing four hundred and sixty four point five square metres.  
 Surveyed by me, with due authority, in September, 2006.

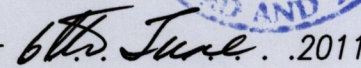
In accordance with Regulation 25(1) of the Land Surveyors' Regulations 1998,  
 I certify that this plan is correct.

Checked by  29/11/11





Entered CMIS 24.01.2013  


Trinidad & Tobago Land Surveyor  2011