

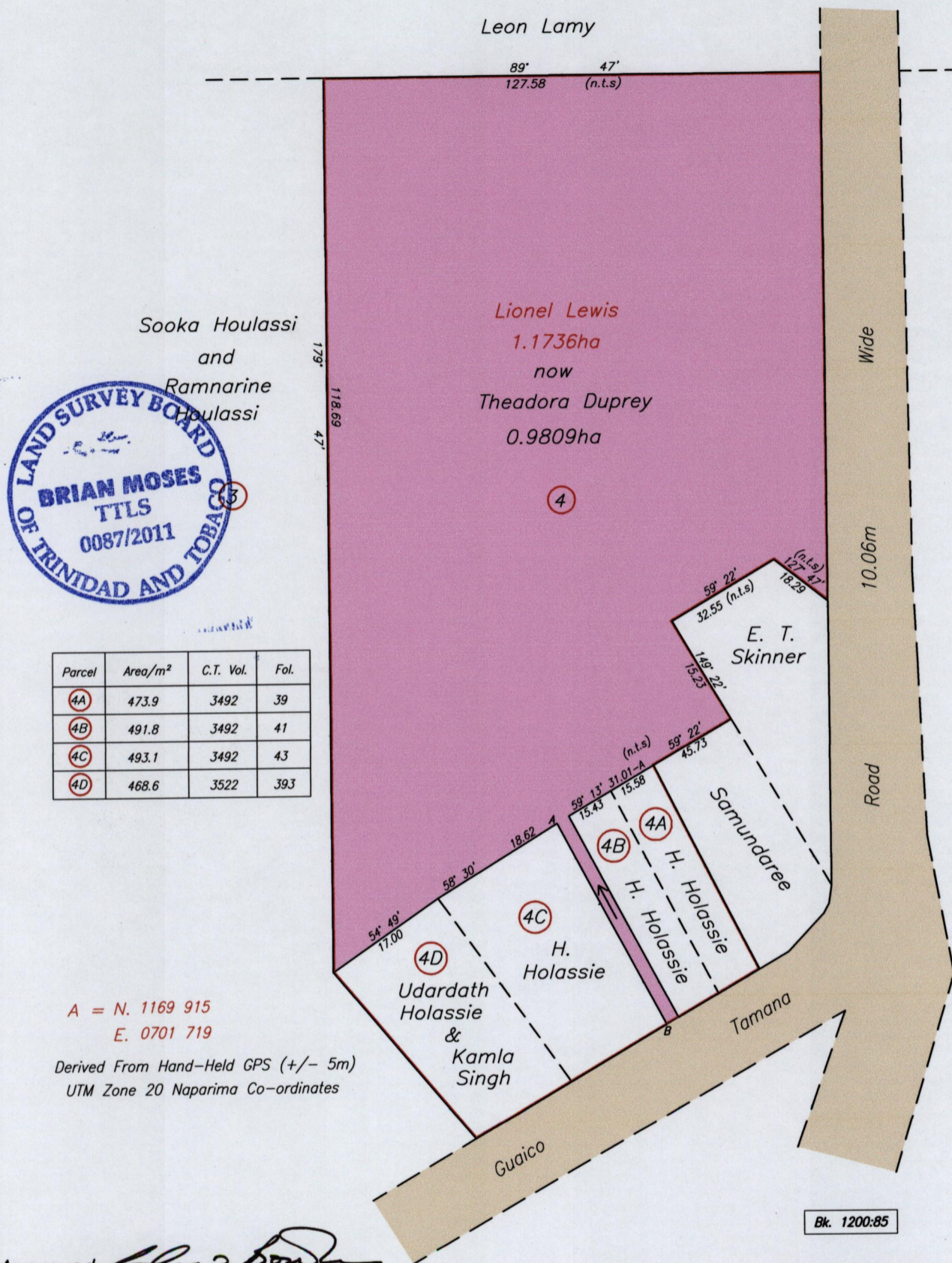
1395

6

R.P.O. Vol. 66 Fol. 33
C.T. Vol. 3263 Fol. 371

Cadastral Sheet E.1.D. 25E/2/d
Ward of Tamana
County of St Andrew

Remaining Portion



A = N. 1169 915
E. 0701 719
Derived From Hand-Held GPS (+/- 5m)
UTM Zone 20 Naparima Co-ordinates

Approved: *[Signature]*
Director of Surveys
2011.10.5

Bk. 1200:85
SCALE 1/750
Distances are in metres

Bearings are Cassini Grid based on Solar Observations
This is a true copy of a diagram of one point one seven three six hectares originally transferred to Lionel Lewis showing a portion coloured pink and containing zero point nine eight zero nine hectares being the remainder after (4) four previous transfers and of other portions of the land. In accordance with Regulation 25 (1) of the Land Surveyors' Regulations 1998, I certify that this plan is correct.

Checked By: *[Signature]*
Entered On:
[Signature]
Trinidad & Tobago Land Surveyor... 10th March 2011