

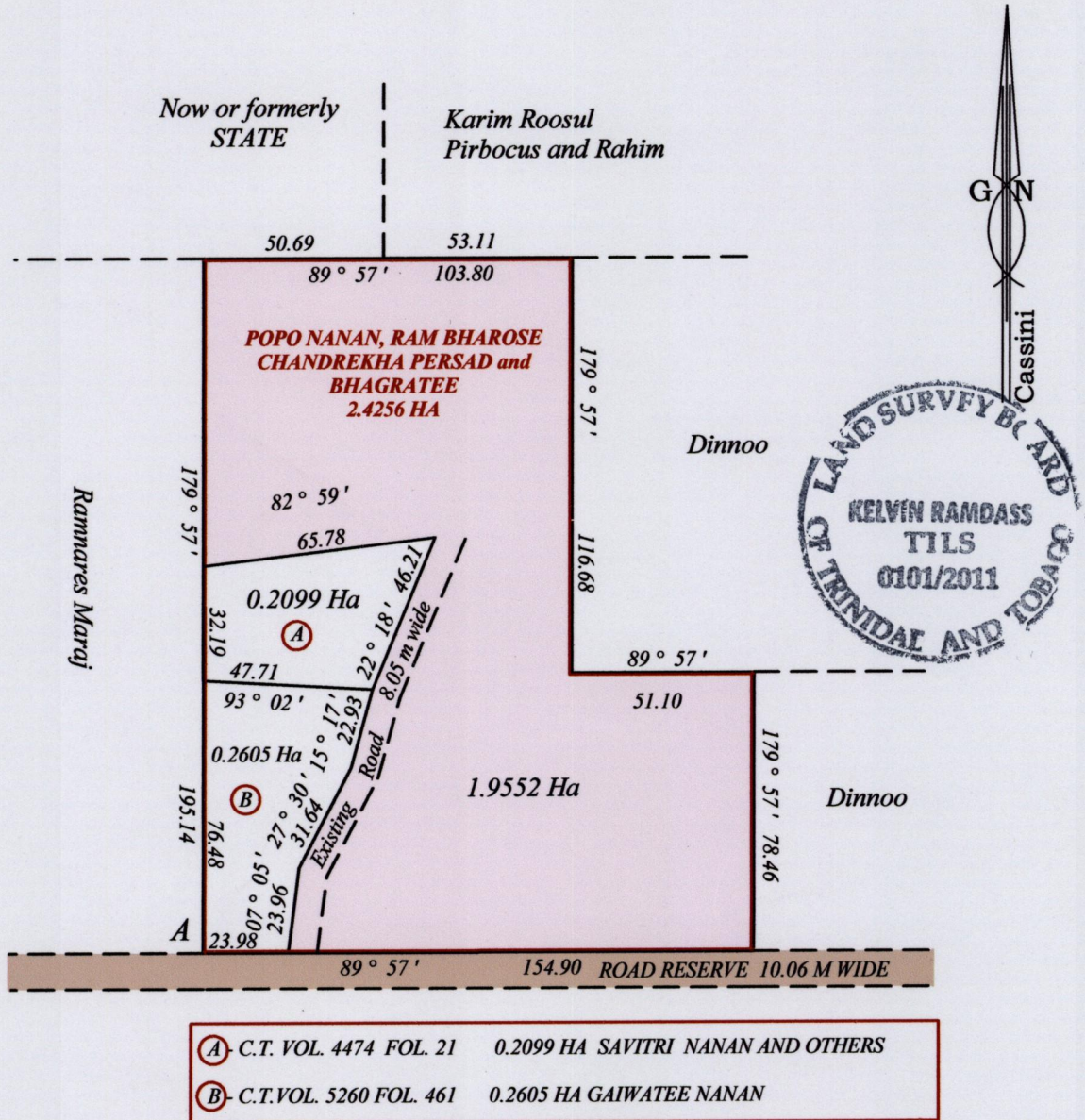
REMAINING PORTION

R.P.O. Vol. 232 Fol. 97
C.T. Vol. 4450 Fol. 511

County of Victoria
Ward of Savana Grande
Cadastral Sheet G.15.A, 64E
2/a

PROCESS ID # 40929
C.T. Vol 5489 Fol 127

REF. Bk. 1282 Fol. 218



Approved by

[Signature]
Director of Surveys 2011.11.21

Coordinates are in WGS84, UTM Zone 20 +/- 5m
At. A- 682870 mE, 1126383 m N

SCALE : 1:2000
Distances are in metres

This is a true copy of a diagram of Two point four two five six hectares, originally transferred to Popo Nanan, Ram Bharose, Chandrekha Persad and Bhagratee showing a portion, coloured pink and containing One point nine five five two hectares, being the remainder, after two previous transfers of another portion of the land. In accordance with Regulation 25(1) of the Land Surveyors' Regulations 1998, I certify that this plan is correct.

Checked by MM 14/11/2011

[Signature] 01/07/2011
Trinidad and Tobago Land Surveyor

Entered on CMIS 02-01-2013
[Signature]