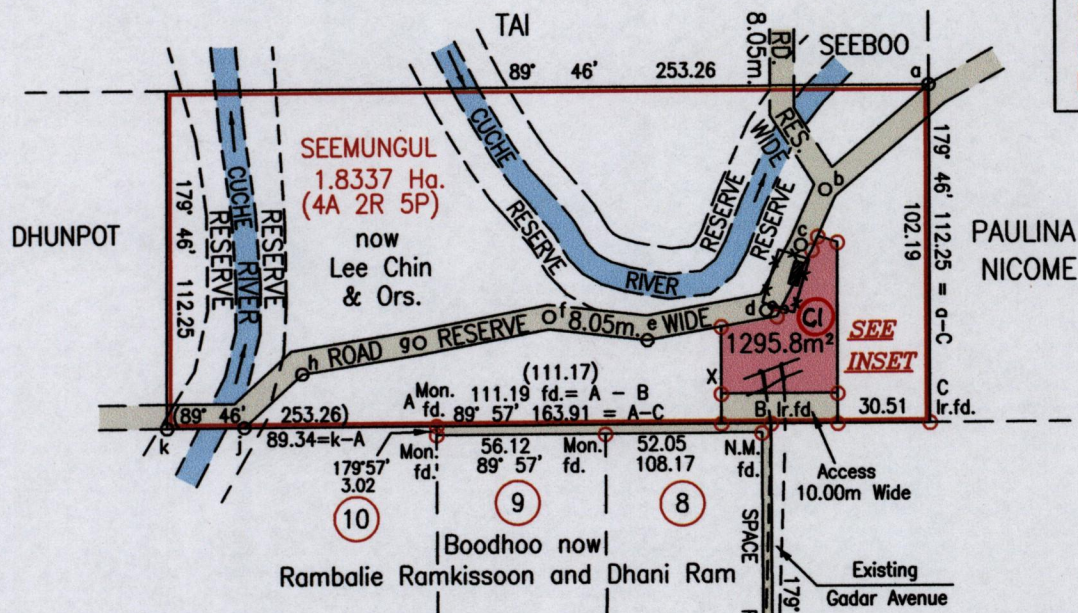
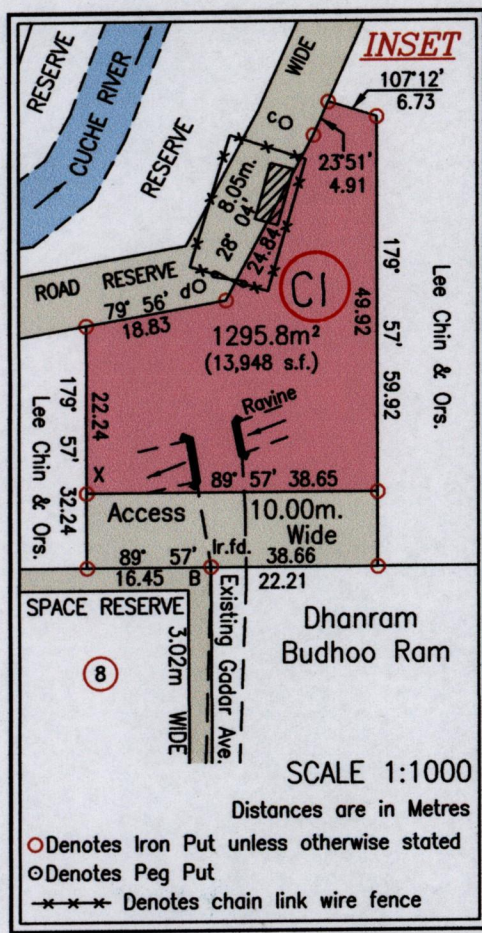


GADAR AVENUE, BICHE"

Vide
Bk. 186:204
Bk. 980:218
Bk. 923:24
Plan R.H.38



Grid North
Cassini



LINE	BEARING	DIST.
a - b	224° 39'	48.97
b - c	203° 51'	20.12
c - d	258° 06'	24.54
d - e	256° 26'	40.64
e - f	283° 35'	33.60
f - g	259° 21'	43.85
g - h	255° 27'	40.23
h - j	227° 36'	26.15
j - k	269° 46'	25.55

X	E 703994
	N 1153826

Reliability Error ± 5.0 m.
Coordinates are UTM,
Naparima 1955 from
Garmin GPSmap 60CSx
Handheld GPS Receiver

SCALE 1:2500

Distances are in Metres
○ Denotes Peg Put

--- Denotes chain link wire fence

Approved

[Signature]
2011.11.4 Director of Surveys



Bearings are Cassini Grid based on Solar Obs.

○ Denotes Iron Put unless otherwise stated

Plan of a Parcel of land coloured pink in the Ward of Charuma

Containing one thousand two hundred and ninety five point eight square metres

Surveyed by me, with due authority, in April 2010 for the Water & Sewerage Authority

In accordance with Regulation 25(1) of the Land Surveyors Regulations 1998,

I certify that this plan is correct.

Checked by *[Signature]* *[Signature]*

Entered on C.M.S. 22-01-2013. Trinidad & Tobago Land Surveyor *[Signature]* September 2011