

1395

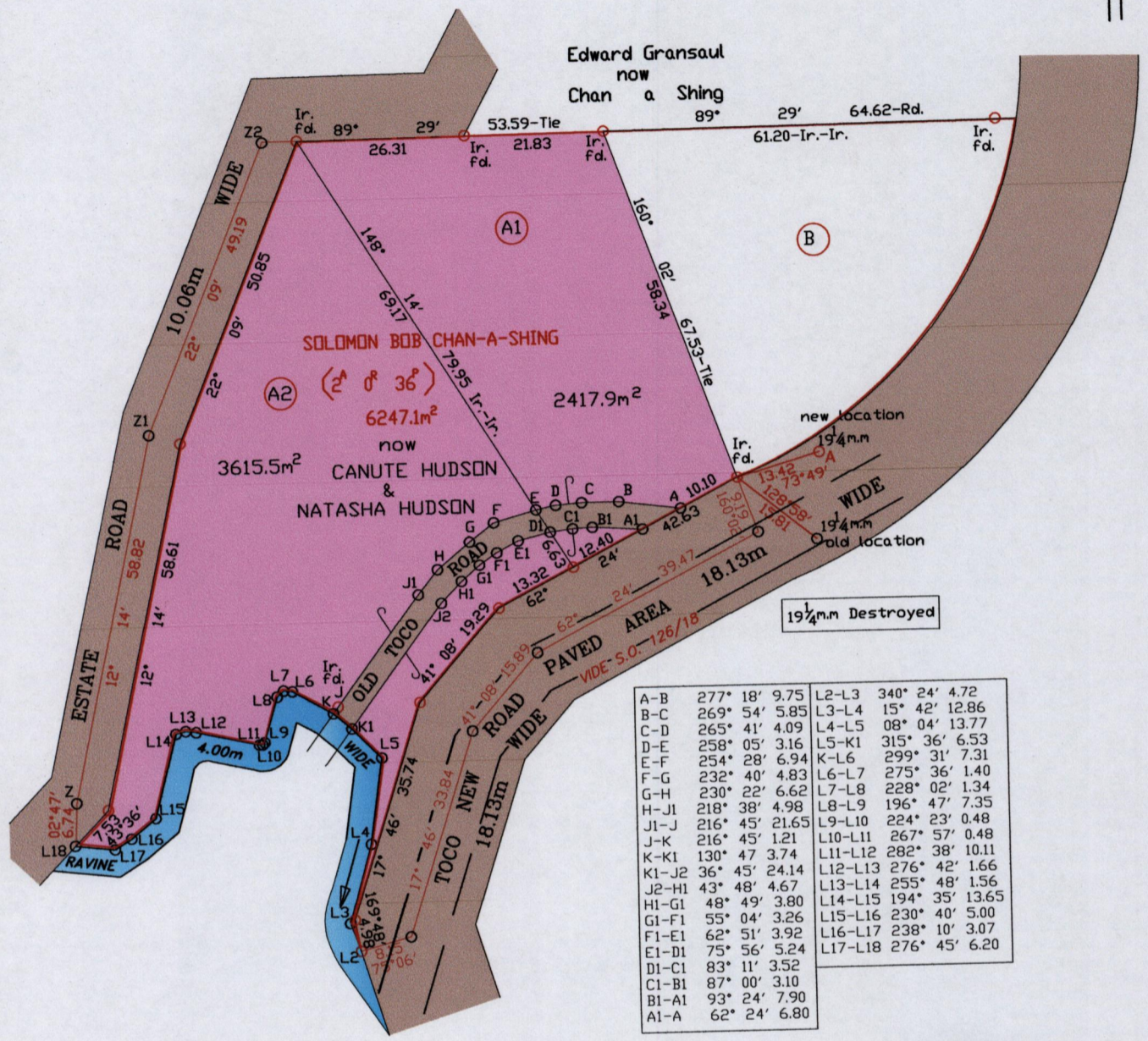
R.P.O. Vol. 438 Fol. 265
C.T. Vol. 1775 Fol. 301

Ward of Matura.
County of St. Andrew.
Cadastral Sheet C.14.C. 16C
1/6

40

U.P.R.N No.

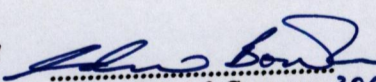
PROCESS ID # 40923



A-B	277° 18'	9.75	L2-L3	340° 24'	4.72
B-C	269° 54'	5.85	L3-L4	15° 42'	12.86
C-D	265° 41'	4.09	L4-L5	08° 04'	13.77
D-E	258° 05'	3.16	L5-K1	315° 36'	6.53
E-F	254° 28'	6.94	K-L6	299° 31'	7.31
F-G	232° 40'	4.83	L6-L7	275° 36'	1.40
G-H	230° 22'	6.62	L7-L8	228° 02'	1.34
H-J1	218° 38'	4.98	L8-L9	196° 47'	7.35
J1-J	216° 45'	21.65	L9-L10	224° 23'	0.48
J-K	216° 45'	1.21	L10-L11	267° 57'	0.48
K-K1	130° 47'	3.74	L11-L12	282° 38'	10.11
K1-J2	36° 45'	24.14	L12-L13	276° 42'	1.66
J2-H1	43° 48'	4.67	L13-L14	255° 48'	1.56
H1-G1	48° 49'	3.80	L14-L15	194° 35'	13.65
G1-F1	55° 04'	3.26	L15-L16	230° 40'	5.00
F1-E1	62° 51'	3.92	L16-L17	238° 10'	3.07
E1-D1	75° 56'	5.24	L17-L18	276° 45'	6.20
D1-C1	83° 11'	3.52			
C1-B1	87° 00'	3.10			
B1-A1	93° 24'	7.90			
A1-A	62° 24'	6.80			

A= N. 1188166
E. 721376



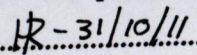
Approved 
Director of Surveys 2011/11/2

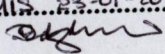
Coordinates are obtained by hand held G.P.S.
W.G.S. 84 Zone 20 (±) 5m.

- Denotes Iron put except stated otherwise.
- Denotes peg put except stated otherwise.

Bearings are Cassini Grid based on Solar Observations
Plan of 2 Parcels of land coloured pink in the Ward of Matura.
Containing together six thousand and thirty three point four square metres.

Surveyed by me, with due authority, in September, 2009.
In accordance with Regulation 25 (1) of the Land Surveyors' Regulations 1998,
I certify that this plan is correct.

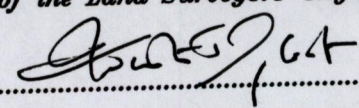
Checked by  31/10/11

Entered by CMIS 23-01-2013


Bk. 997 Fol. 30

SCALE 1/1000

Distances are in metres


Trinidad & Tobago Land Surveyor..... 30-6-2011