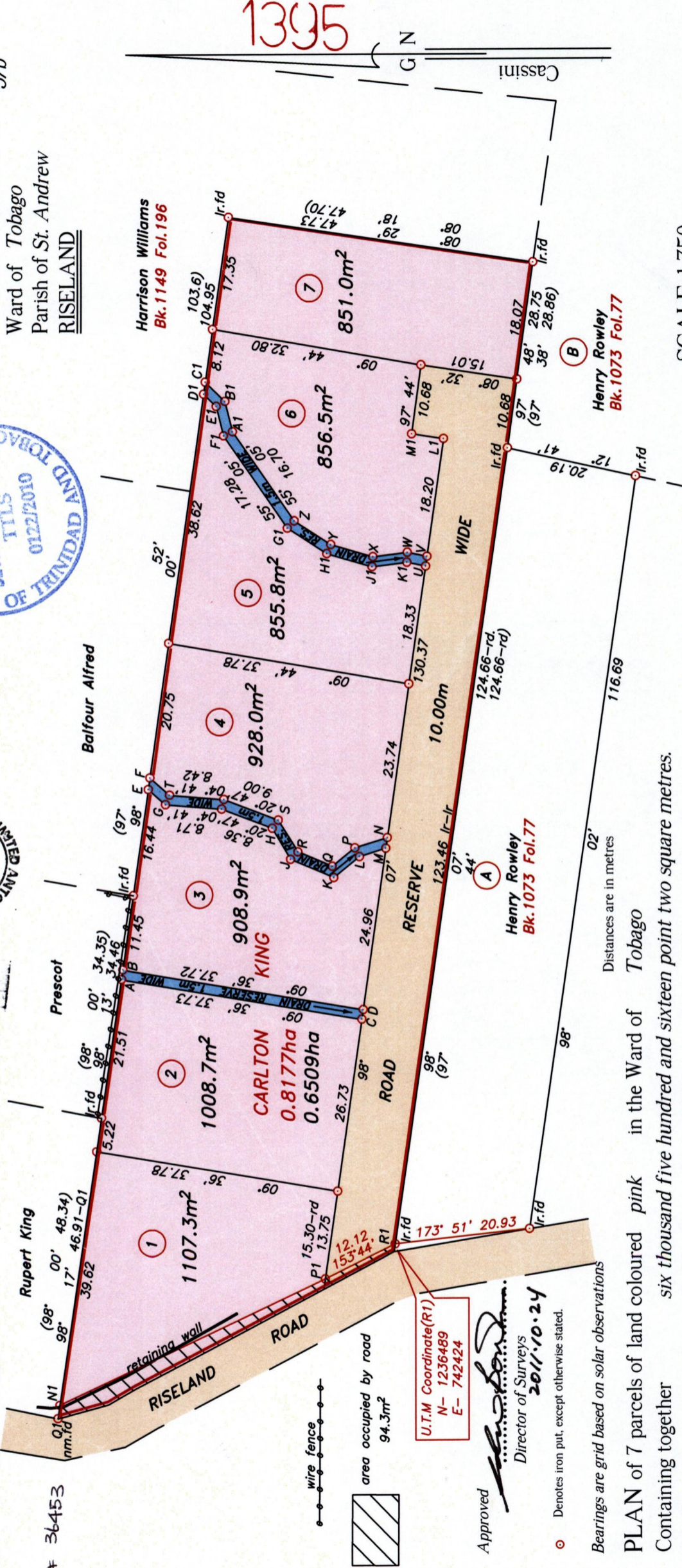
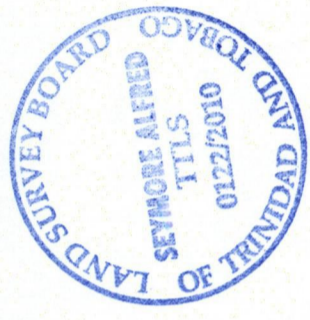


U.P.R.N.....
 R.P.O Vol. Fol.
 C.T Vol. 3156 Fol. 337

Process ID# 36453

Cadastral Sheet I.17.1 & M-IF
 5/b
 Ward of Tobago
 Parish of St. Andrew
RISELAND



1395

Cassini
 N

36

SCALE 1:750

Note- UTM Zone 20 (WGS 84) Coordinates obtained from hand held GPS receiver + 7.00m

Distances are in metres
 PLAN of 7 parcels of land coloured pink in the Ward of Tobago
 Containing together six thousand five hundred and sixteen point two square metres.
 Surveyed by me, with due authority in May 2009

In accordance with Regulation 25 (1) of the Land Surveyors' Regulations 1998, I certify that this plan is correct.

Checked by r.m. 11.10.10
 Entered C.H.S. 17.12.2012

U.T.M. Coordinate(R1)
 N- 1236489
 E- 742424

Approved
 Director of Surveys
 2011.10.24

Denotes iron put, except otherwise stated.

Bearings are grid based on solar observations

Seymore Alfred
 28/5/2010
 Path: \\cassi-server\09survey\k044\ckingdwg

Trinidad & Tobago Land Surveyor. 2010.

1395/36



LEGEND

LINE	AZIMUTH	DISTANCE
A-B	98° 13'	1.50
C-D	98° 07'	1.50
E-F	98° 00'	1.80
E-G	221° 30'	3.53
H-J	239° 19'	5.59
J-K	202° 51'	7.28
K-L	141° 20'	5.11
L-M	162° 47'	4.29
M-N	98° 07'	1.66
N-P	342° 47'	5.28
P-Q	321° 20'	4.50
Q-R	22° 51'	5.79
R-S	58° 02'	5.79
T-F	41° 30'	4.03
U-V	98° 07'	1.50
V-W	11° 30'	3.13
W-X	353° 02'	5.38
X-Y	16° 06'	6.81
Y-Z	32° 38'	6.75
A1-B1	75° 57'	4.83
B1-C1	44° 19'	4.24
D1-E1	224° 19'	2.71
E1-F1	255° 57'	4.68
G1-H1	212° 38'	7.26
H1-J1	196° 06'	7.34
J1-K1	173° 02'	5.45
K1-U	191° 30'	2.97
L1-M1	08° 32'	5.00
N1-P1	154° 49'	45.33
N1-Q1	278° 17'	2.07
Q1-R1	152° 54'	58.62
C1-D1	278° 00'	1.86
P1-Q1	332° 41'	46.51

