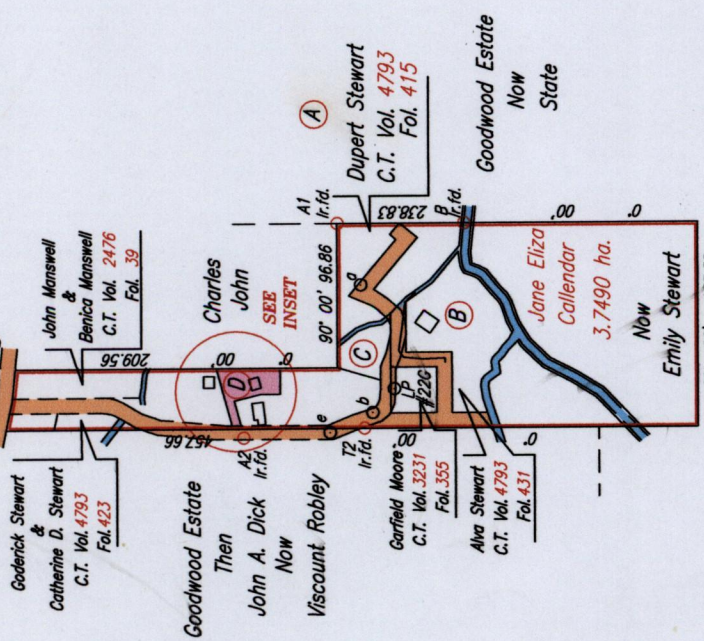


R.P.O. Vol. 933
C.T. Vol. 4708

Process ID# 33088

Cadastral Sheet I.19.E
Ward of Tobago
Parish of St. Mary



SCALE 1:5000
Distances are in METRES

Approved *[Signature]*
Director of Surveys 2011.10.25

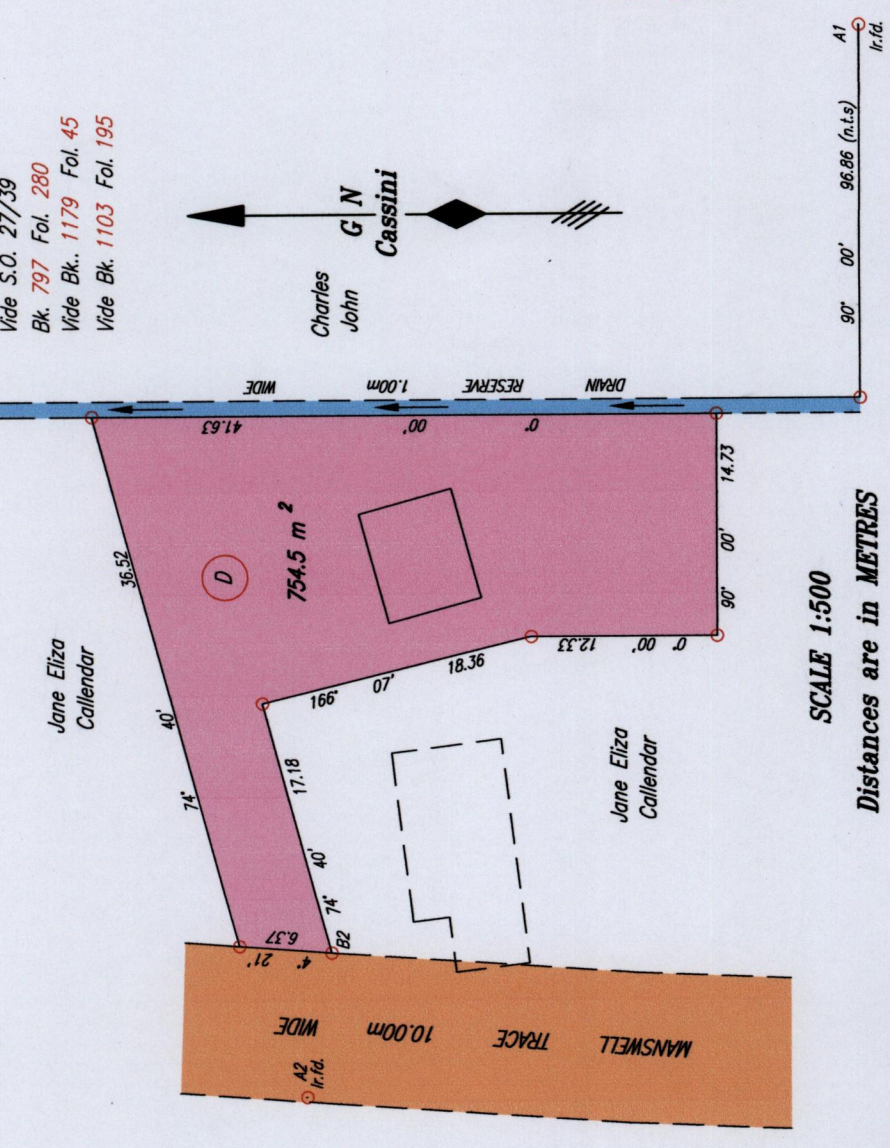
- Denotes Iron put except where otherwise stated
- Bearings are Cassini Grid based on Solar Observations

PLAN of a Parcel of land coloured pink in the Ward of Tobago
Containing seven hundred and fifty four point five square metres
Surveyed by me, with due authority, in July 2009

In accordance with Regulation 25 (1) of The Land Surveyors' Regulations 1998,
I certify that this plan is correct.

Checked by . *[Signature]*

Entered on . *[Signature]*

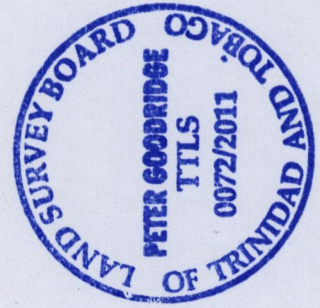


SCALE 1:500
Distances are in METRES

Coordinates of T2 (Ir.f.d): 0757323mE, 1239244mN
U.T.M. 20 Naparima (+/- 5.00m)
G.P.S. Direct Observation

LEGEND

a - b	264' 47"	86.59
b - LP422G	132' 24"	21.33
b - e	335' 01"	31.14
e - T2	172' 42"	22.68
e - A2	356' 49"	57.43
A2 - B2	99' 40"	9.73
A1 - B	180' 00"	82.29
A1 - a	249' 31"	44.32



1395

30

GOODWOOD

INSET

Trinidad & Tobago Land Surveyor
C:\LESS 2009\TOBAGO\DENON,NEVILLE\00.dwg
FILE NO: TD044
2011