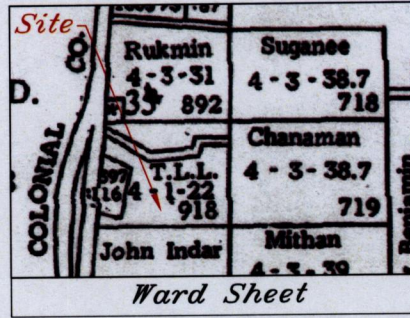
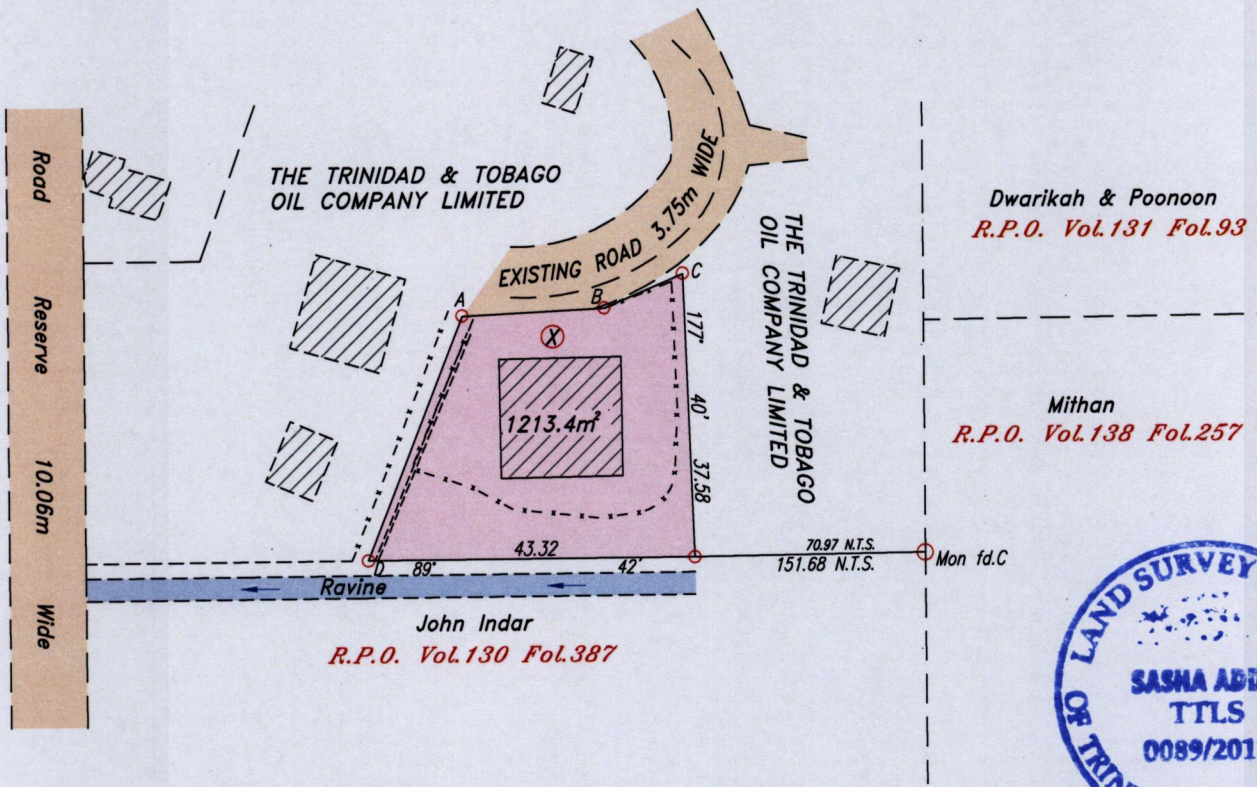
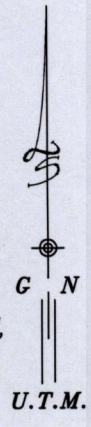


Process ID# 41317



Parcel Address: Off New Colonial Road, Barrackpore.



STATION	BEARING	DISTANCE
A - B	87° 07'	18.86
B - C	66° 27'	11.37
D - A	21° 12'	34.63
Mon A - Mon C	130° 59'	201.85
(Tie line)	(131° 04')	201.90

LEGEND	
	Houses
	Fence
	Drain

Approved Director of Surveys 2011.9.30

Ref.: Bk. 918 Fol. 58  
 SCALE 1:1000

○ Denotes Iron put except otherwise stated.  
 Note: Bearings are U.T.M. grid based on solar observations. Distances are in metres.

Plan of a Parcel of land coloured pink in the Ward of Naparima  
 Containing one thousand two hundred and thirteen point four square metres  
 Surveyed by me, with due authority, in November 2009.

In accordance with Regulation 25(1) of the Land Surveyors' Regulations 1998,  
 I certify that this plan is correct.

Checked by 5/9/11

21 Sept 2011  
 Trinidad & Tobago Land Surveyor

Entered CMIS 05-12-2012