

1395/23 1395

23

Process ID # 44099

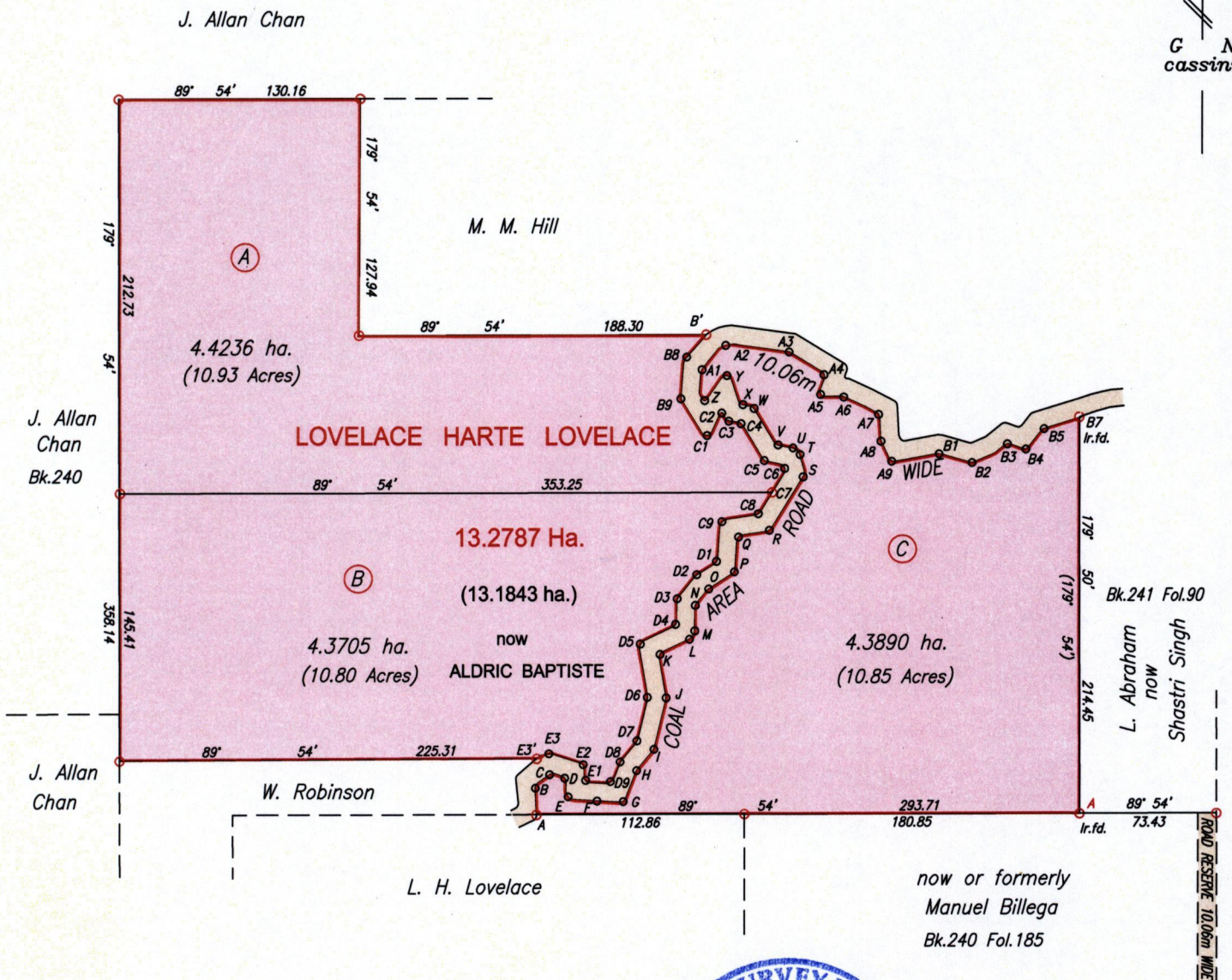
R.P.O. Vol. 418 Fol. 419

Cadastral Sheet D.15.A. 34F

Ward of Chaguanas 4/c

County of Caroni

MAMORAL



Approved *[Signature]*  
Director of Surveys 2011.10.24

Bk.241 Fol.224

A Ir.f.d. N 1156916 Hand Held GPS +/- 5m  
E 688835 UTM proj. WGS84 datum

SCALE 1/3500  
Distances are in metres

○ Denotes Ir.put unless otherwise stated  
 Bearings are Cassini Grid based on Solar Observations  
 PLAN of 3 Parcels of land coloured pink in the Ward of Chaguanas  
 Containing together thirteen point one eight three one hectares  
 Surveyed by me, with due authority, in June 2008  
 In accordance with Regulation 25 (1) of the Land Surveyors' Regulations 1998,  
 I certify that this plan is correct.

Checked by *[Signature]* 2011.10.24

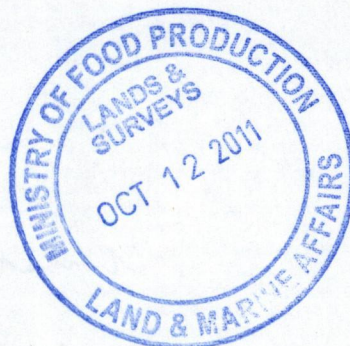
Entered on *[Signature]*

*[Signature]*

Trinidad & Tobago Land Surveyor 20<sup>th</sup> October 2011

Station	Bearing	Distance	Station
A	357° 33'	14.34	B
B	46° 29'	10.68	C
C	103° 18'	8.37	D
D	169° 18'	10.28	E
E	98° 29'	15.91	F
F	91° 14'	14.21	G
G	23° 11'	18.34	H
H	38° 54'	14.86	I
I	13° 19'	28.52	J
J	351° 45'	23.57	K
K	62° 50'	17.94	L
L	32° 40'	5.32	M
M	1° 14'	13.69	N
N	39° 06'	11.44	O
O	56° 26'	16.66	P
P	6° 41'	19.19	Q
Q	77° 40'	17.04	R
R	32° 04'	34.34	S
S	351° 51'	12.23	T
T	313° 00'	5.22	U
U	281° 34'	8.25	V
V	326° 20'	23.52	W
W	288° 52'	6.43	X
X	330° 57'	17.92	Y
Y	221° 46'	18.08	Z
Z	355° 01'	16.69	A1
A1	44° 29'	18.22	A2
A2	96° 53'	30.69	A3
A3	122° 51'	22.45	A4
A4	189° 48'	10.82	A5
A5	96° 17'	12.59	A6
A6	116° 30'	21.01	A7
A7	174° 35'	14.47	A8

Station	Bearing	Distance	Station
A8	151° 36'	12.25	A9
A9	81° 09'	25.78	B1
B1	104° 59'	18.42	B2
B2	62° 09'	21.50	B3
B3	105° 44'	10.25	B4
B4	41° 48'	14.71	B5
B5	71° 35'	20.18	B7
B'	221° 13'	15.89	B8
B8	187° 48'	22.68	B9
B9	144° 15'	24.39	C1
C1	33° 16'	14.51	C2
C2	138° 58'	5.78	C3
C3	101° 54'	6.80	C4
C4	147° 24'	23.55	C5
C5	111° 03'	11.76	C6
C6	207° 35'	14.69	C7
C7	212° 28'	13.76	C8
C8	257° 33'	20.18	C9
C9	187° 29'	21.86	D1
D1	236° 06'	12.86	D2
D2	219° 05'	16.87	D3
D3	183° 38'	13.73	D4
D4	240° 54'	21.89	D5
D5	172° 15'	28.89	D6
D6	193° 20'	24.10	D7
D7	218° 26'	14.60	D8
D8	205° 55'	11.88	D9
D9	272° 57'	13.45	E1
E1	350° 53'	8.66	E2
E2	287° 35'	19.59	E3
E3	249° 32'	7.13	E3'



1395/28