

Process ID # 43010

R.P.O. Vol. 88 Fol. 45

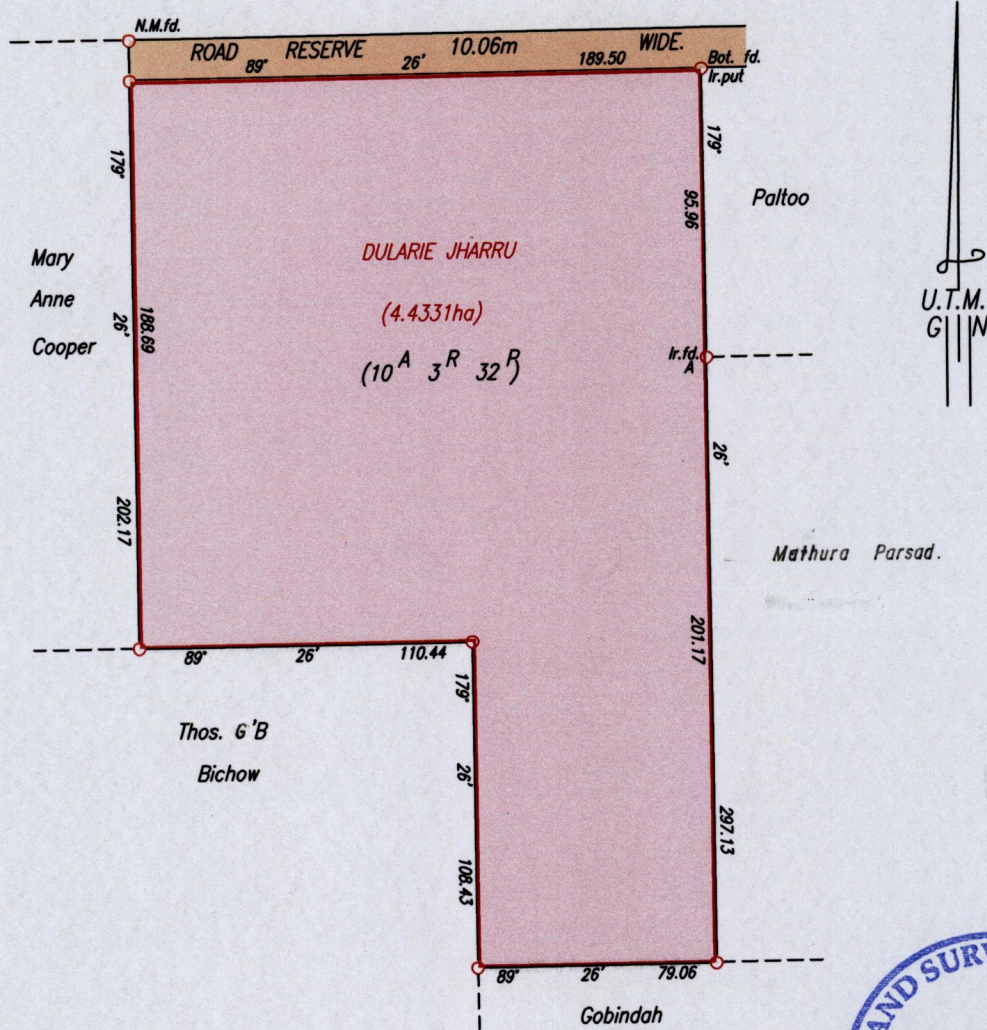
C.T. Vol. 2985 Fol. 247

Ref. : Bk. 156 Fol. 187

Cadastral Sheet E.2.E. 25F  
3/a

Ward of Tamana

County of St. Andrew



Approved *[Signature]*  
Director of Surveys 2011.10.18



Point A

Co - ordinates obtained by Hand Held G.P.S. (Nap. Datum)

Accuracy ± 5m

E 703587m

N 1168598m

Npte : To obtain Cassini bearings + 18 minutes.

SCALE 1 : 2500  
Distances are in metres

○ Denotes Iron put except otherwise stated

Bearings are U.T.M. Grid based on Solar Observations

PLAN of a Parcel of land coloured pink in the Ward of Tamana

Containing four point four three three one hectares.

Surveyed by me, with due authority, on 12th. & 16th. August, 2011

In accordance with Regulation 25 (1) of the Land Surveyors' Regulations 1998,

I certify that this plan is correct.

Checked by *[Signature]*  
Trinidad & Tobago Land Surveyor

Entered . . . . . 26/8 . . . . . 2011