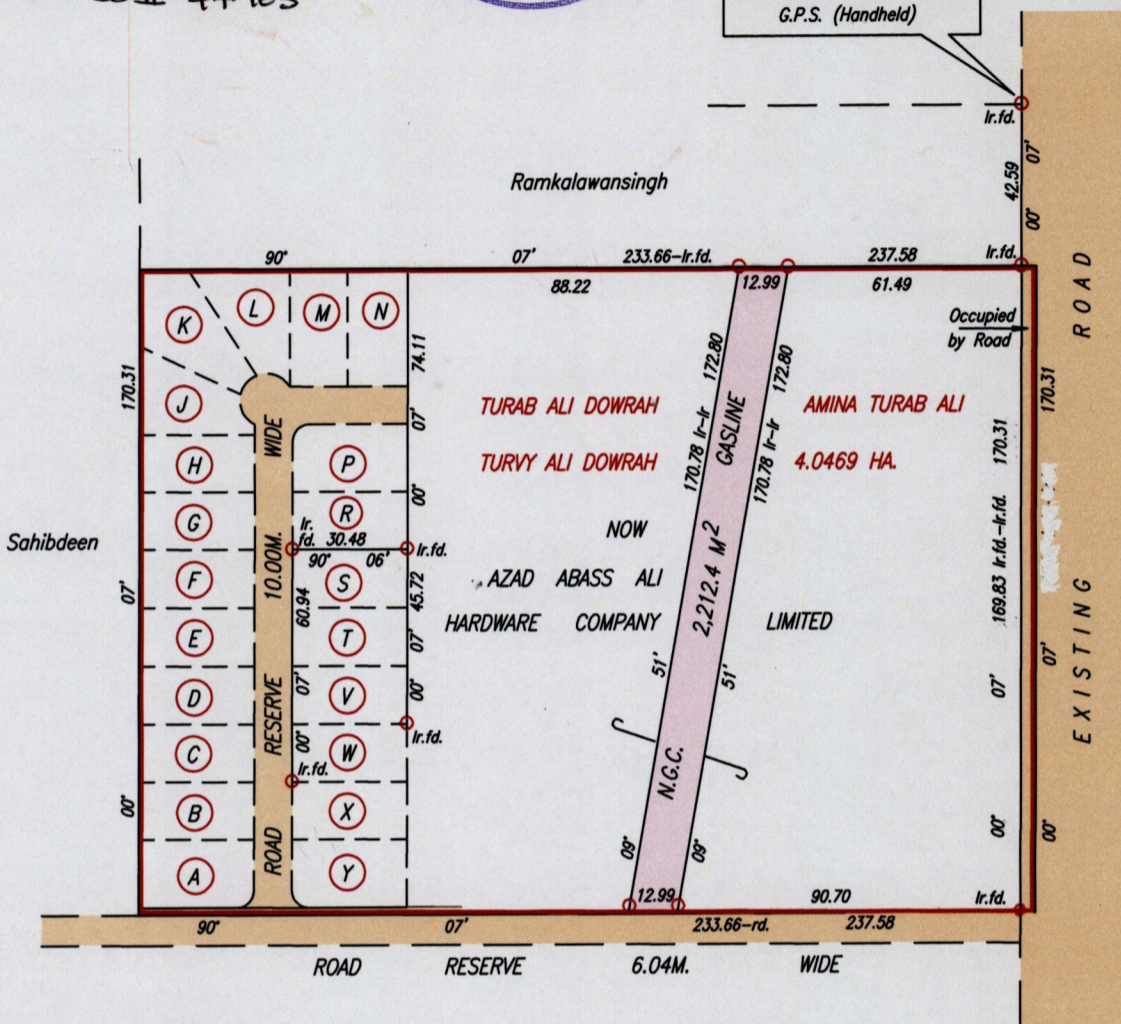


See Plan in Vol.1024 Fol.255  
 Bk.834 Fol.38  
 Bk.1124 Fol.122  
 Bk.1195 Fol.145



Process ID # 47963

672861 mE, 1167125 mN  
 U.T.M. 20, Nap. (+/- 5.0m.)  
 G.P.S. (Handheld)

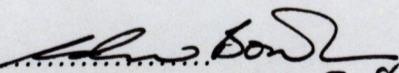


SEE PLAN J.L. 202.

LEGEND

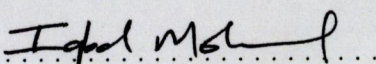
| LOT | NAMES OF OWNERS                         | AREA                 | C.T REFERENCES   | LOT | NAMES OF OWNERS                                  | AREA                 | C.T REFERENCES   |
|-----|---|----------------------|------------------|-----|--|----------------------|------------------|
| A   | LIONEL SEERAM                           | 544.4 M <sup>2</sup> | VOL.5274 FOL.89  | M   | KERWYN MAHATO & NALINI GOPIECHANSINGH            | 470.5 M <sup>2</sup> | VOL.5337 FOL.295 |
| B   | LIONEL SEERAM                           | 464.4 M <sup>2</sup> | VOL.5274 FOL.105 | N   | JODIE RAGOOBARSINGH                              | 494.3 M <sup>2</sup> | VOL.5318 FOL.24  |
| G   | IFTIKAR HOSEIN & SALMA VARACHHIA HOSEIN | 464.4 M <sup>2</sup> | VOL.5319 FOL.461 | P   | RONALD JASON SEECHARAN & MARIA VASHTIE SEECHARAN | 544.3 M <sup>2</sup> | VOL.5314 FOL.315 |
| L   | IFTIKAR HOSEIN & SALMA VARACHHIA HOSEIN | 500.3 M <sup>2</sup> | VOL.5318 FOL.195 | X   | LIONEL SEERAM                                    | 464.4 M <sup>2</sup> | VOL.5274 FOL.121 |
|     |   |                      |                  | Y   | LIONEL SEERAM                                    | 544.2 M <sup>2</sup> | VOL.5274 FOL.137 |

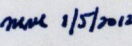
SCALE 1/2000  
 Distances are in Metres.

Approved:   
 Director of Surveys 2012.5.8

○ Denotes Iron put unless otherwise stated  
 Bearings are Cassini Grid based on solar Observations

PLAN of a Parcel of land coloured pink in the Ward of Chaguanas  
 Containing two thousand, two hundred and twelve point four square metres  
 Surveyed by me, with due authority, in October, 2011  
 In accordance with Regulation 25 (1) of The Land Surveyors' Regulations 1998,  
 I certify that this plan is correct.



Checked by:  1/5/2012  
 Trinidad & Tobago Land Surveyor ..... 19/11 ..... 2012

ENTERED: CMIS 06-02-2013  
