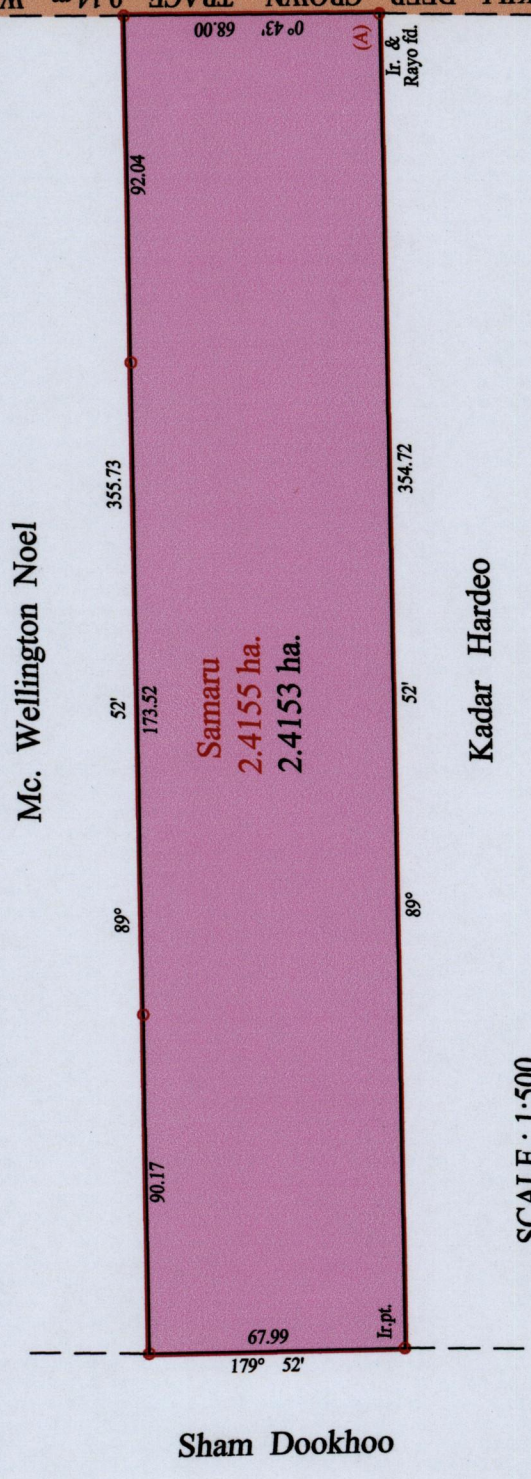
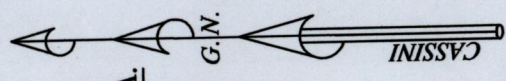


VESTING ORDER

R.P.O. Vol. 711 Fol. 123
C.T. Vol. Fol.

Ward of Charuma
County of Nariva
Cadastral Sheet (E.21.E) 55.A.
2/b

KILL DEER CROWN TRACE 9.14 m. WIDE



Approved Director of Surveys 20/2/5.8

SCALE : 1:500

o Denotes Iron fd. except stated otherwise.

Note: Bearings are cassini grid based on solar observations
Distances are in metres

PLAN of a Parcel of land coloured pink in the Ward of Charuma
Containing two point four one five three hectares
Surveyed by me, with due authority, on 26th September 2011 for Kadar Hardeo
In accordance with Regulation 25 (1) of the Land Surveyors' Regulations 1998,
I certify that this plan is correct.

At Station (A)
E 0696538
N 1143688
Reading taken with
Handheld G.P.S.
U.T.M. Zone 20
Naparima
+ 5 m.

Vide Bk. 652 fol. 83
Vide Bk. 727 fol. 60



Checked by 1/5/2012

Entered on Trinidad & Tobago Land Surveyor 27:04 2012