

1395

#20 2008/02/18
1395/219

219

R. P. O. Vol. Fol.

C. T. Vol. 4002 Fol. 423

Gen. plan in Vol. 4242 Fol. 397

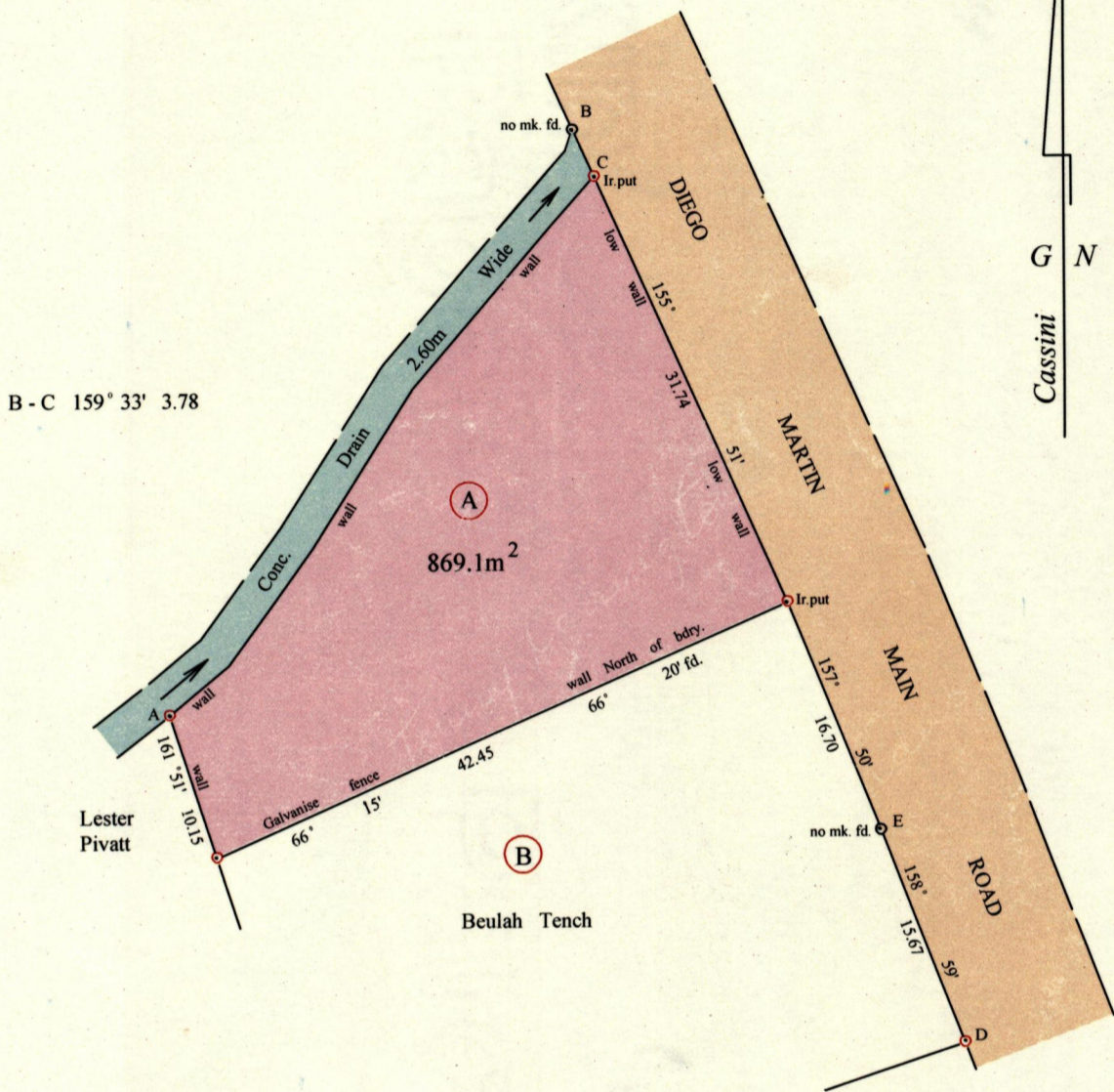
Vide Bk. 1198 Fol. 192

BK 1280 Fol. 109

Cadastral Sheet A. 14. P. 13D
1/a & 1/c

Ward of Diego Martin

County of St. George



Approved

[Signature]
Director of Surveys 2008.8.8

SCALE 1 : 500

Distances are in metres

o Denotes iron found except otherwise stated

Bearings are Cassini Grid based on Solar Observations

PLAN of a parcel of land coloured pink in the Ward of Diego Martin

Containing eight hundred and sixty nine point one square metres

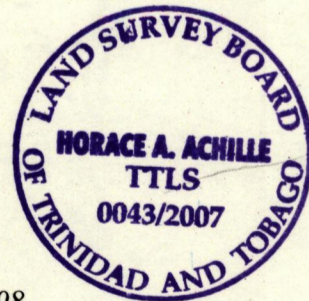
Surveyed by me, with due authority, ^{on 19th} ~~in~~ June 2007
H.A.

In accordance with Regulation 25 (1) of the Land Surveyors Regulations 1998

I certify that this plan is correct.

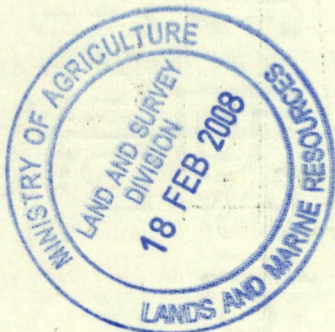
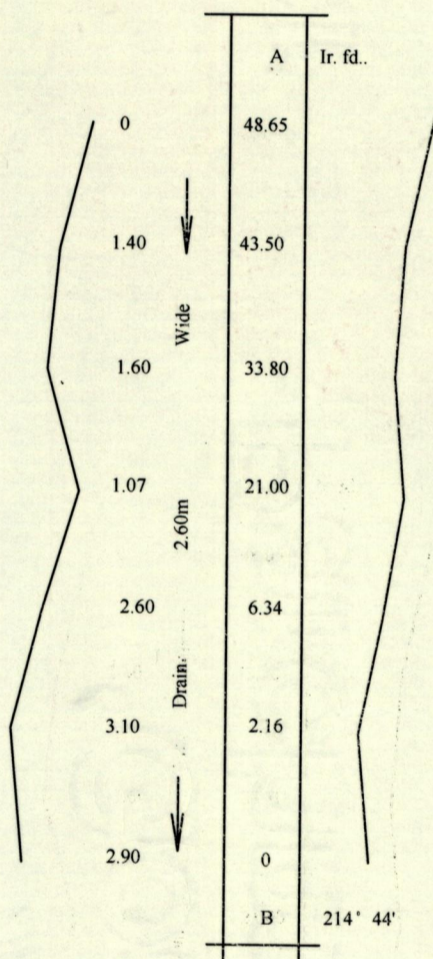
Checked by *[Signature]* 5/8/08 *[Signature]* Horace A. Achille

Entered on Trinidad & Tobago Land Surveyor 8th August 2007



519

1395



AA Fortune
 1395/219
~~1280/207~~
 114/214