

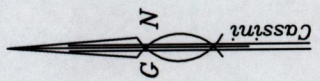
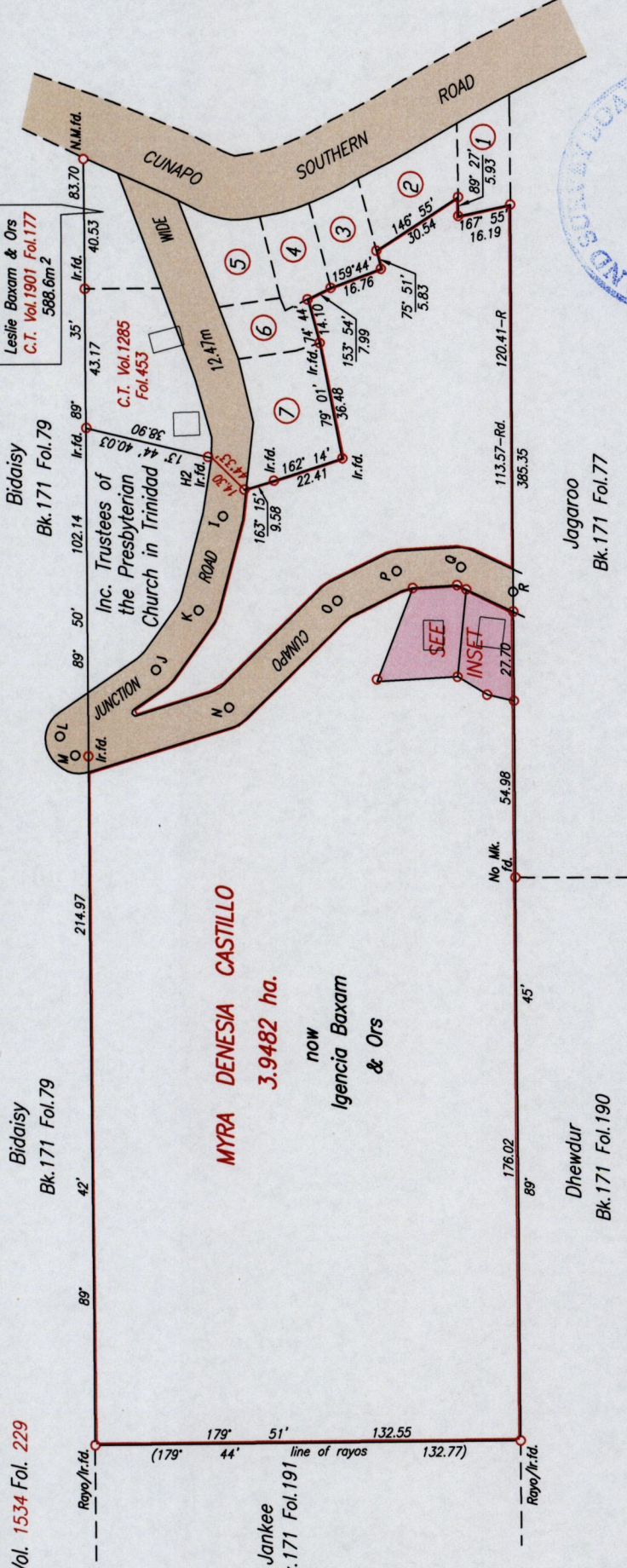
R.P.O. Vol. 71 Fol. 435  
C.T. Vol. 1534 Fol. 229

Bidaisy  
Bk. 171 Fol. 79

Bidaisy  
Bk. 171 Fol. 79

Leslie Baxam & Ors  
C.T. Vol. 1901 Fol. 177  
588.6m<sup>2</sup>

Cadastral Sheet E.2.I. 25F. 35C  
3/c 1/a  
Ward of Turure  
County of St. Andrew  
Coalmine

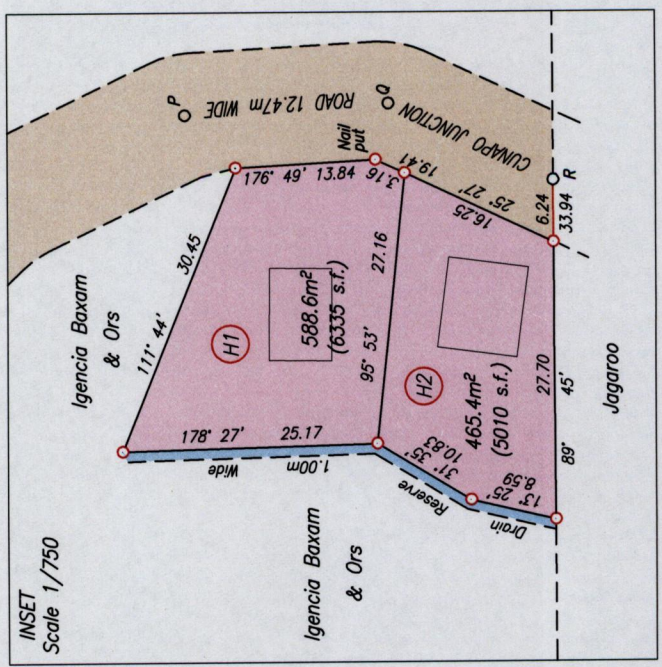


Station	Bearing	Distance	Station
R	25° 27'	18.00	Q
Q	356° 49'	20.12	P
P	334° 05'	20.62	O
O	315° 43'	47.27	N
N	342° 57'	50.09	M
M	51° 29'	7.64	L
L	145° 34'	36.41	J
J	125° 51'	22.73	K
K	104° 45'	30.18	I
I	96° 14'	28.77	H
H2	255° 48'	19.08	I



Jagaroo  
Bk. 171 Fol. 77

Dhewalur  
Bk. 171 Fol. 190



Bk. 1012 Fol. 153  
Bk. 915 Fol. 16  
Bk. 1196 Fol. 469  
Plan E.K. 107

A Ir.f.d. N 1159033 Hand Held GPS  
E 709983 Nap. 1955

Approved: *[Signature]*  
Director of Surveys 2012.4.18

○ Denotes Ir.put unless otherwise stated  
Bearings are Cassini Grid based on Solar Observations  
PLAN of 2 Parcels of land coloured pink in the Ward of Turure  
Containing together one thousand and fifty four point zero square metres  
Surveyed by me with due authority in January 2007  
In accordance with Regulation 25 (1) of the Land Surveyors' Regulations 1998,  
I certify that this plan is correct.

Checked By: M.M.A. 17/4/2012  
Entered on.....

*[Signature]*  
Trinidad & Tobago Land Surveyor 10<sup>th</sup> April 2012

SCALE 1/2000  
Distances are in metres

1395

212