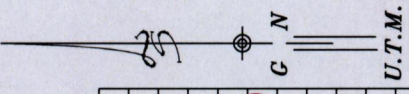


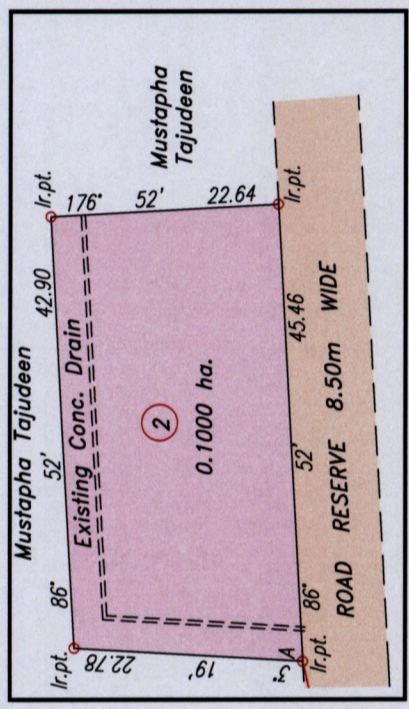
R.P.O Vol. 13 Fol. 329
 C.T. Vol. 3694 Fol. 281
 Coordinates
 Ir.pt. A : N 686727
 E 1119912
 Error Statement : ±4m
 Datum Definition : U.T.M. Zone 20 Naparima
 Source : Magellan Hand Held GPS
 Parcel Address: Basse Terre,
 Moruga

Ward of Moruga
 County of Victoria
 Cadastral Sheet G.20.G&H, 74C
 1/c



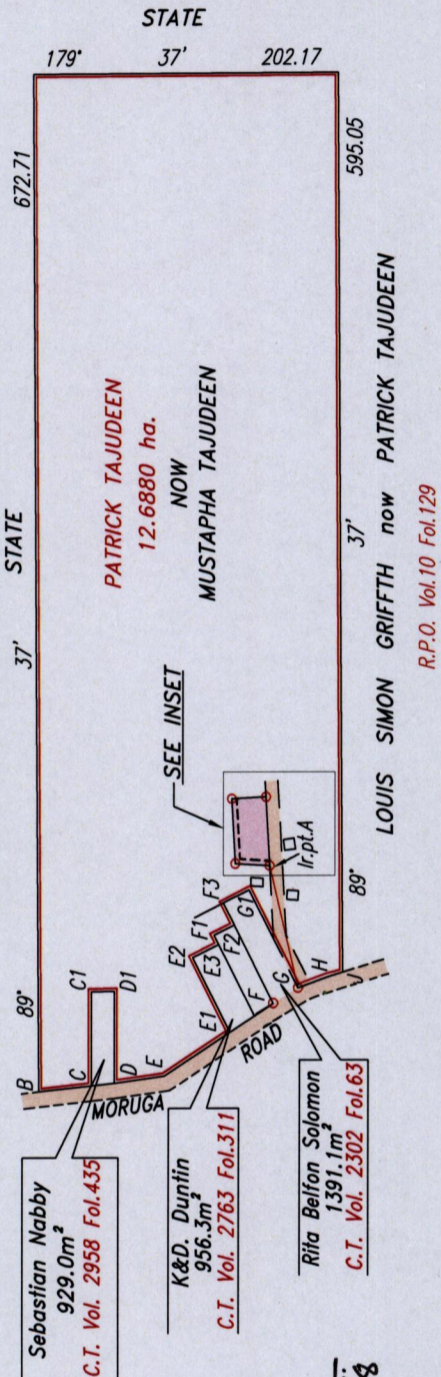
1395 209

2009



INSET
 SCALE 1:750

Line	Bearing	Dist.
B-C	173° 34'	35.13
C-D	173° 23'	15.33
D-E	172° 03'	33.10
F-G	148° 57'	19.21
G-Ir.pt.A	76° 48'	82.87(11E)
G-H	158° 23'	16.60
H-J	162° 45'	14.91
C-C1	89° 37'	61.79
C1-D1	179° 37'	15.24
C-D	173° 41'	15.33
D-D1	89° 55'	60.13
E1-E2	63° 21'	52.43
E2-E3	148° 57'	16.29
E3-F1	63° 21'	5.48
F1-F2	148° 57'	16.46
F2-F3	63° 21'	14.91
F3-G1	148° 57'	19.21
G-G1	63° 21'	72.80



Ref: Bk. 317 Fol. 138
 Bk. 1128 Fol. 189
 Bk. 1148 Fol. 48
 Bk. 318 Fol. 148
 See Plan EH89



Process ID# 45203
 Approved:
 Director of Surveys 2012.4.18

SCALE 1:5000
 Distances are in metres.
 Plan of a Parcel of land coloured pink in the Ward of Moruga
 Containing zero point one zero zero zero hectare
 Surveyed by me, with due authority, in July 2010.
 In accordance with Regulation 25(1) of the Land Surveyors' Regulations 1998,
 I certify that this plan is correct.

Checked:
 Entered: C.M.S. 24.07.2012
 1st April 2012
 Trinidad & Tobago Land Surveyor