

R.P.O. Vol. 335 Fol. 413
 C.T. Vol. 3131 Fol. 33
 U.P.I.N. No.:

Process ID # 50234

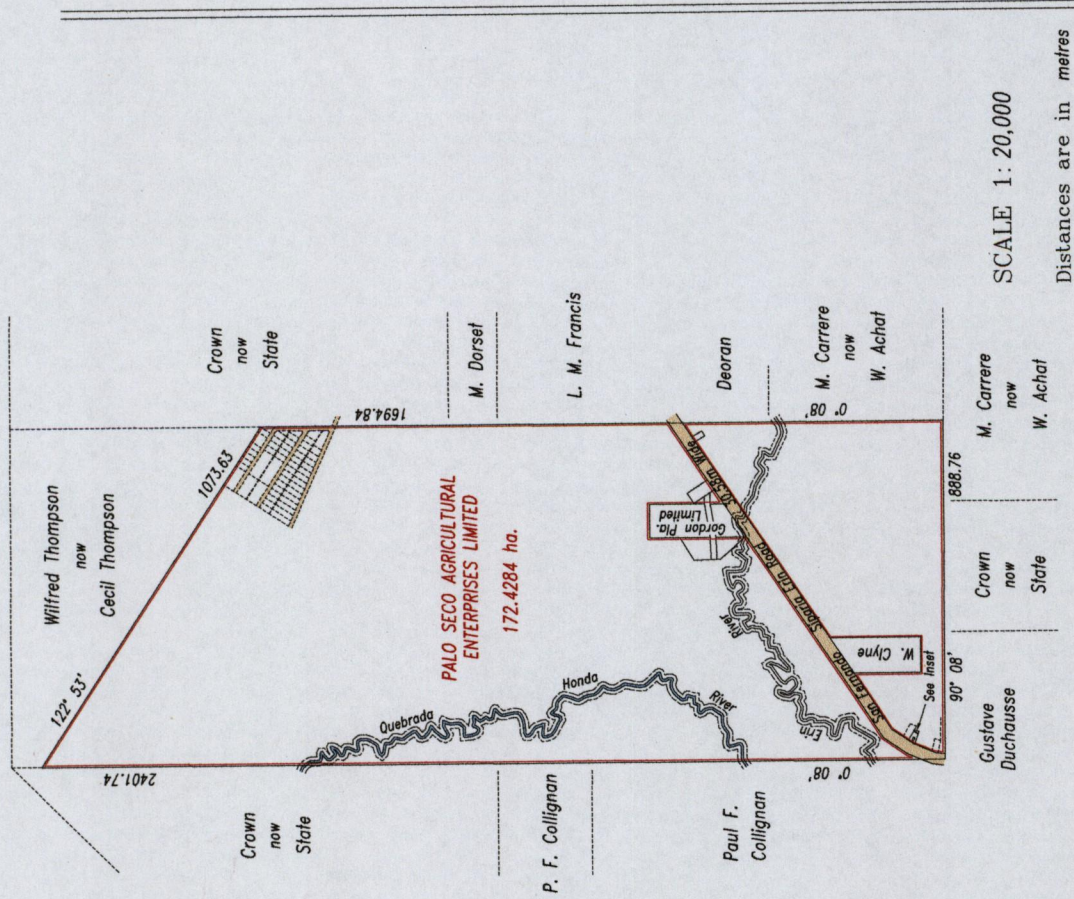
Cadastral Sheet 6.16.N. 72C
 3/c

County of St. Patrick

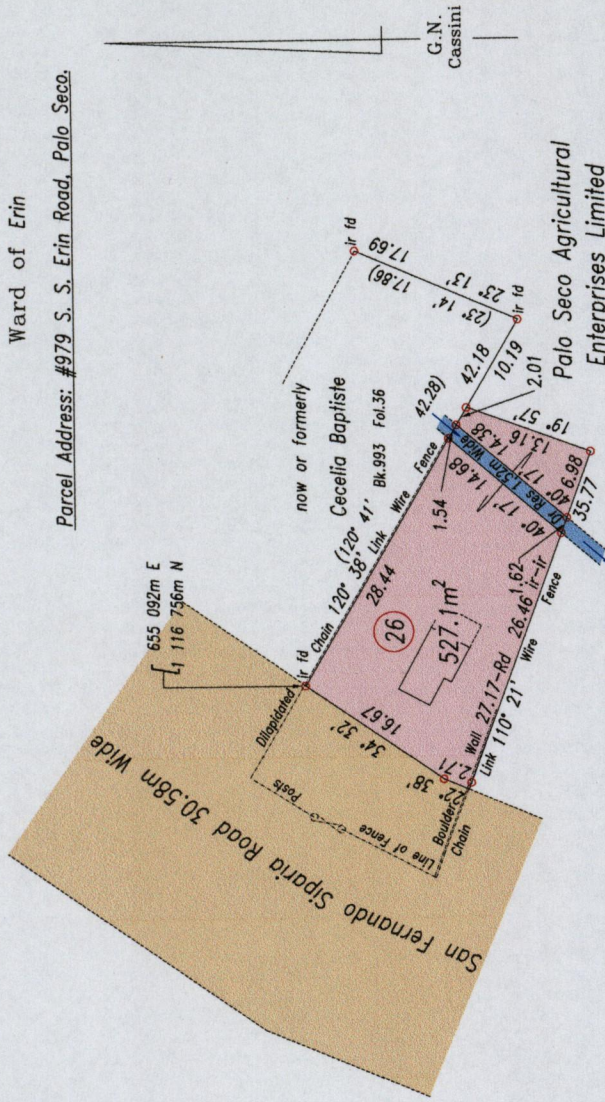
Ward of Erin

Parcel Address: #979 S. S. Erin Road, Palo Seco.

Inset:



SCALE 1: 20,000
 Distances are in metres



Approved

[Signature]
 Director of Surveys
 2012.4.13

References: Bk.441 Fol.50
 Bk.993 Fol.36
 Bk.901 Fol.147
 Bk.1163 Fol.73
 Plan C.K. 85
 Plan R.B. 70

Coordinate Information
Source: GPS (Hand Held)
Error Statement: +/- 5m
Datum: Naparima, UTM (Zone 20)

Bearings are Cassini Grid based on Solar Observations

SCALE 1: 750

Distances are in metres

PLAN of a parcel of land coloured pink in the Ward of Erin
 Containing five hundred and twenty seven point one square metres
 Surveyed by me, with due authority, in July 2008

In accordance with Regulation 25(1) of the Land Surveyors' Regulations 1998, I certify that this plan is correct.

Checked by *[Signature]*
 Entered *[Signature]* 2012.4.13

[Signature]
 Trinidad & Tobago Land Surveyor
 20/5/2012



1395

1988