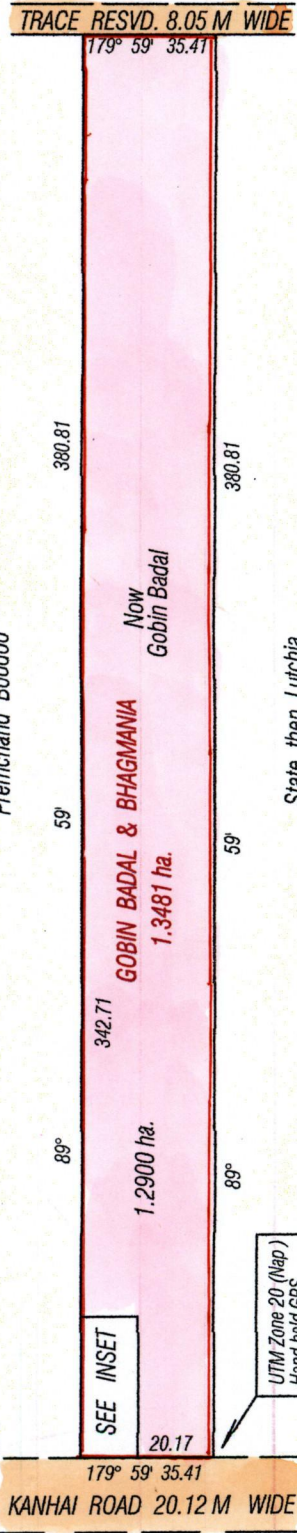


RPO . Vol 37 Fol. 471  
 CT. Vol. 1224 Fol. 381  
 CT Vd 5535 Fol 417

Process ID# 45301

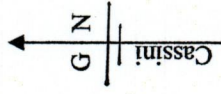
REMAINING PORTION  
 Bk. 1175 Fol. 106

Ward of Savana Grande  
 County of Victoria  
 Cadastral Sheet G-9-0 64 A  
 4/C

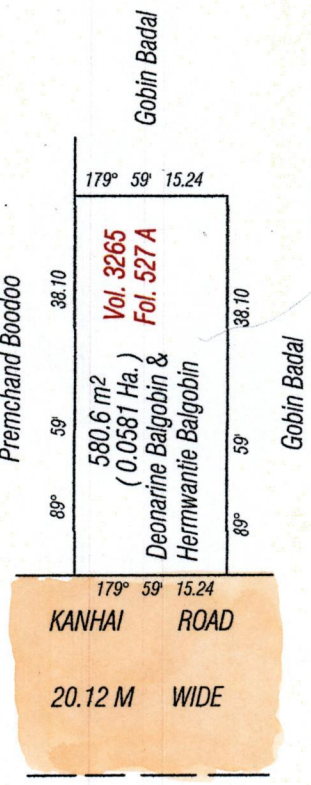


SEE INSET

UTM Zone 20 (Map)  
 Hand held GPS  
 0677730 E ±08  
 1127860 N



INSET



SCALE = 1 / 750

Approved, *[Signature]*  
 Director of Surveys 2012.4.11

Bearings are Cassini Grid based on Solar Obs.

SCALE 1:2000  
 Distances are in metres

Note: To obtain compass bearings add/subtract minutes  
 This is a true copy of a diagram of one point three four eight one hectares  
 Originally transferred to Gobin Badal and Bhagmania  
 Showing a portion coloured pink and containing one point two nine zero hectares  
 Being the remainder after one transfer of another portion of the land  
 In accordance with Regulation 25 (1) of the Land Surveyors' Regulations 1998 I certify that this plan is correct.

Checked by *[Signature]* 12.07.10  
 Entered C.M.S. 07.07.2012  
*[Signature]*  
 Winston Ranchoran  
 TTLS  
 0040/2012  
 Trinidad and Tobago Land Surveyor 14.4.2012



1395

197



1395/197

Lot #	C.T. Vol & Folio	Name
	5535 fol 421	Gobin & Bhagmanica

