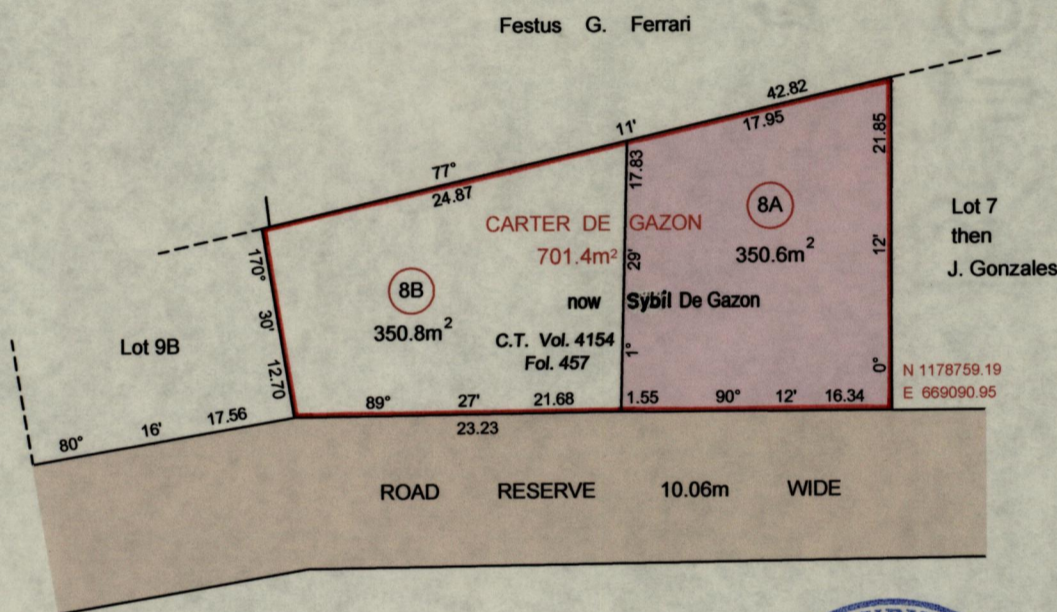
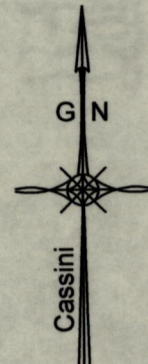


R.P.O Vol. 863 Fol. 7
C.T. Vol. 1675 Fol. 203

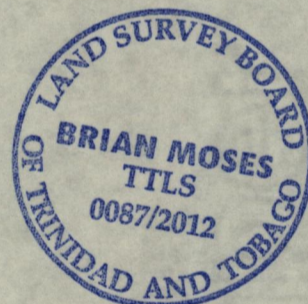
Ward of St.Anns
County of St.George
Cadastral Sheet B.17.J 13F
3/c

Process ID # 43758

LOT 8



WGS 84 Zone 20 , +/-5.0m



Approved Director of Surveys 2012. 4.4

Scale 1/500
Distances are in metres

Note: To obtain compass bearings add 1 minute

This is a true copy of a diagram of seven hundred and one point four square metres, originally transferred to CARTER DE GAZON showing a portion coloured pink and containing three hundred and fifty point six square metres being the remainder after one previous transfer of another portion of the land
In accordance with Regulation 25(1) of the Land Surveyors' Regulations 1998, I certify that this plan is correct.

Checked by

Entered on 11-07-2012
Trinidad & Tobago Land Surveyor 13th March 2012