

1395

185

R.P.O. Vol. 517 Fol. 133

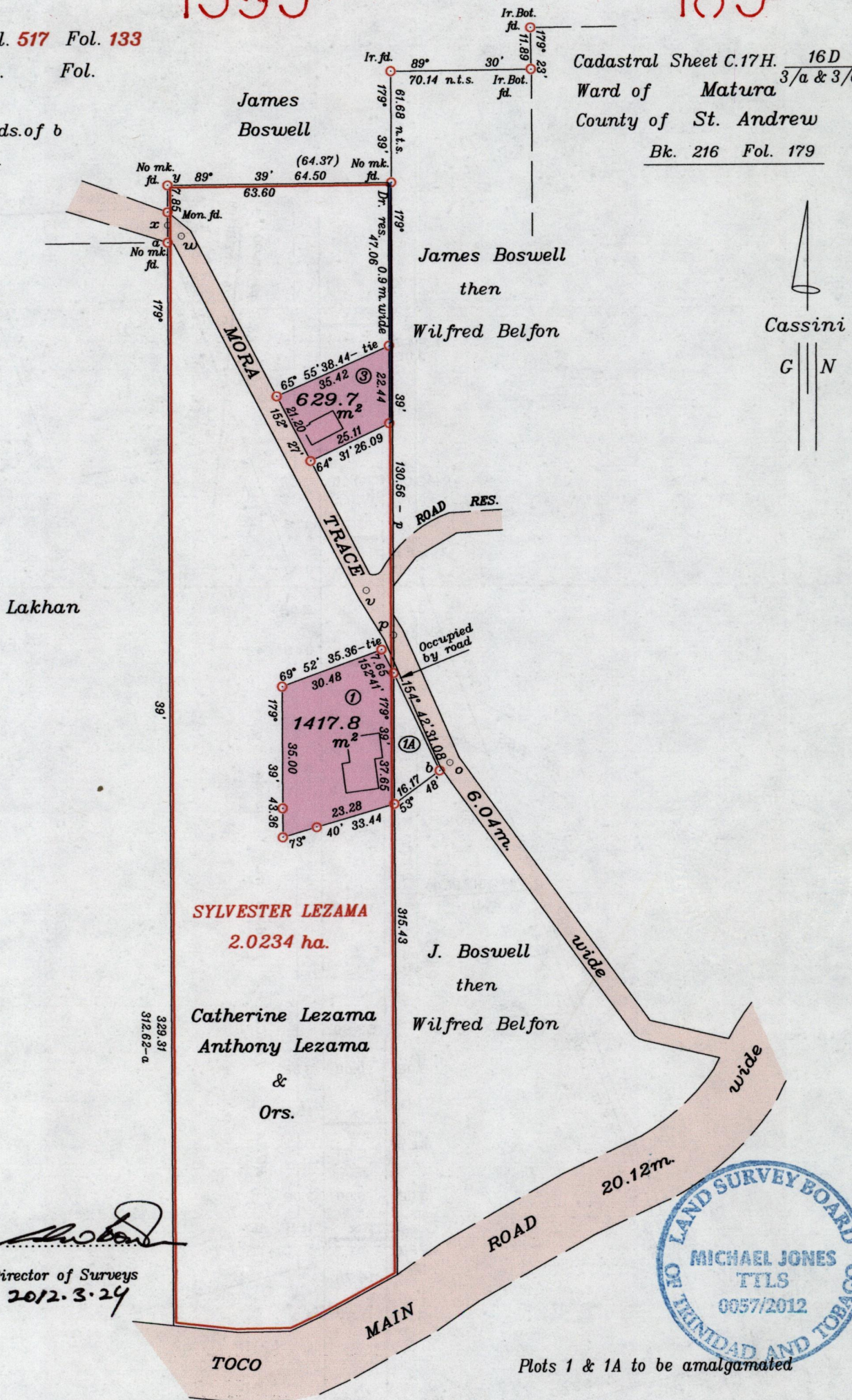
C.T. Vol. Fol.

Cadastral Sheet C.17H. 16D  
Ward of Matura 3/a & 3/c  
County of St. Andrew  
Bk. 216 Fol. 179

U.T.M. co-ords. of b

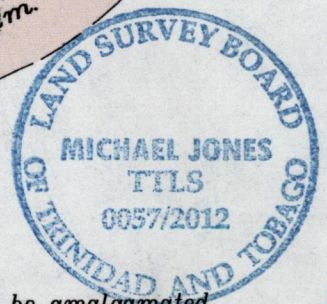
N 1179500 m.

E 708550 m.



Approved *[Signature]*

Director of Surveys  
2012.3.24



Plots 1 & 1A to be amalgamated

Co-ordinates are U.T.M. 20.Wgs 84  
obtained by hand-held G.P.S.

⊙ Denotes Ir.pt. except otherwise stated.  
Bearings are based on Solar observations.

PLAN of 2 parcels of land coloured pink in the Ward of Matura  
Containing together Two thousand and forty seven point five sq. metres  
Surveyed by me with due authority in August & September, 2004 & May, 2011.  
In accordance with Reg. 25(1) of the Land Surveyors' Regulations,  
I certify that this plan is correct.

Checked by *[Signature]*  
Entered on .....

Trinidad & Tobago  
Land Surveyor

*[Signature]*

12 - 7 - 2012.

P.T.O.

SCALE 1 : 1500  
Distances are in metres



