

1395

175

R.P.O. Vol. 13 Fol. 209

C.T.Vol. 4769 Fol. 269

Cadastral Sheet E.2.N. ^{35C}/_{2/a/2/c}

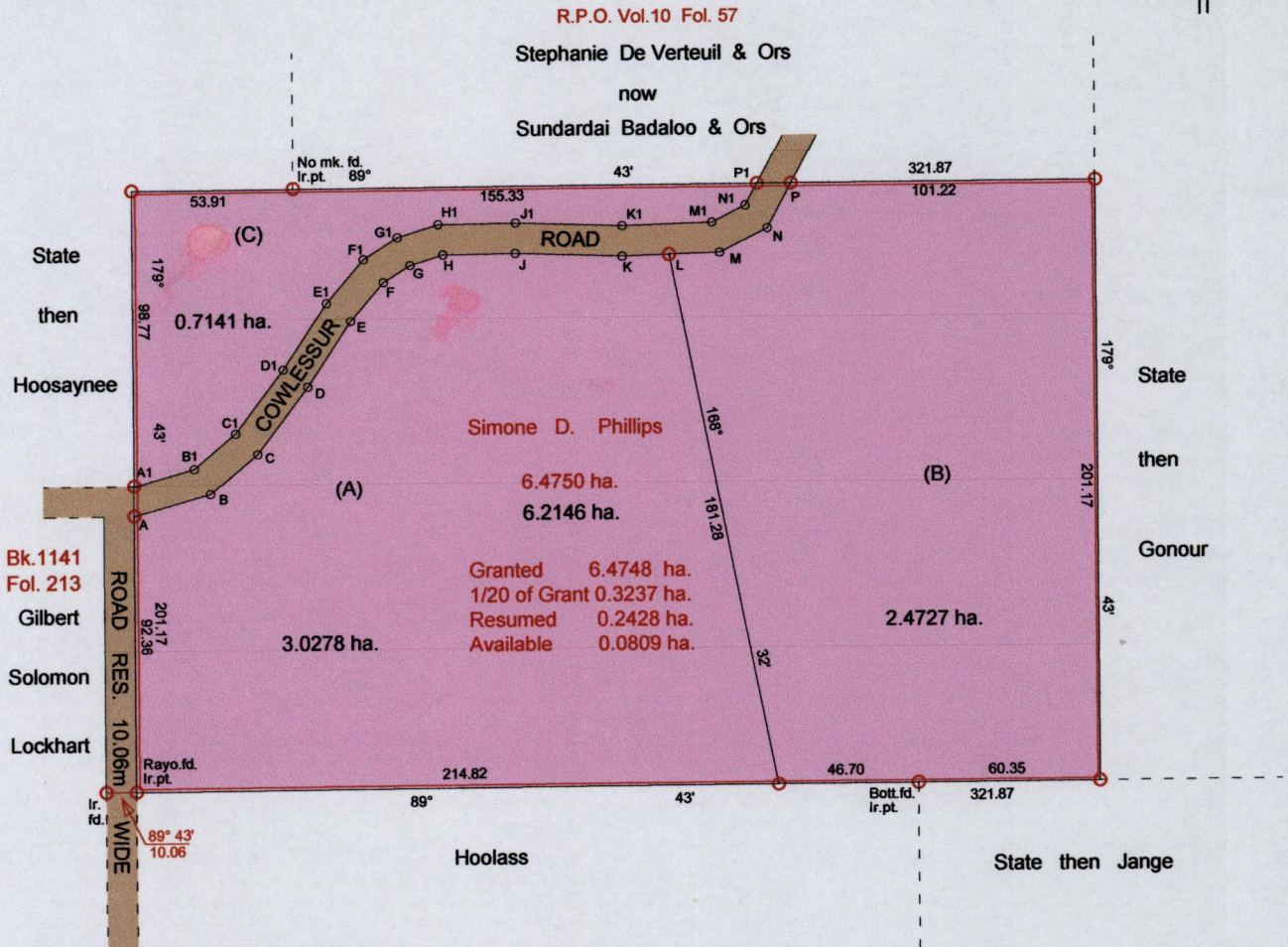
Ward of Turure.

County of St. Andrew.

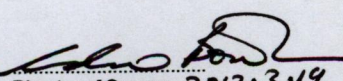
See plan K.C.25

Bk.168 fol. 61

G N
Cassini



A-B	74°	13'	26.58	A-A1	359°	43'	10.04
B-C	49°	51'	20.53	A1-B1	74°	13'	20.87
C-D	36°	46'	28.06	B1-C1	49°	51'	17.21
D-E	33°	24'	26.25	C1-D1	36°	46'	26.61
E-F	40°	31'	16.93	D1-E1	33°	24'	26.58
F-G	57°	50'	10.54	E1-F1	40°	31'	19.09
G-H	72°	47'	11.57	F1-G1	57°	50'	13.39
H-J	89°	18'	24.47	G1-H1	72°	47'	14.35
J-K	91°	57'	35.85	H1-J1	89°	18'	25.93
K-L	88°	07'	15.69	J1-K1	91°	57'	35.75
L-M	88°	07'	16.96	K1-M1	88°	07'	30.11
M-N	63°	29'	17.86	M1-N1	63°	29'	12.43
N-P	27°	54'	16.98	N1-P1	27°	54'	8.36
				P1-P	89°	43'	11.41

Approved 
Director of Surveys 2012.3.19

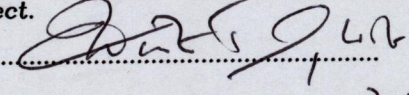
Note : Coordinates obtained by hand held G.P.S. A1= N. 1,165,028
W.G.S.84 UTM Zone 20 (+/-) 5m E. 0,706,136

SCALE: 1/2000

- Denotes peg put unless otherwise stated
- Denotes iron put unless otherwise stated

Bearings are based on solar observations. Note : To obtain compass bearing add minutes Distances are in metres.

PLAN of 3 parcels of land coloured pink in the Ward of Turure.
Containing together six point two one four six hectares.
Surveyed by me, with due authority, in October, 2011 for Simone Phillips.
In accordance with regulation 25 (1) of the Land Surveyors' Regulations 1998,
I certify that this plan is correct.

Checked by  13/3/2012

Entered on..... 2-3-2012
Trinidad & Tobago Land Surveyor.....