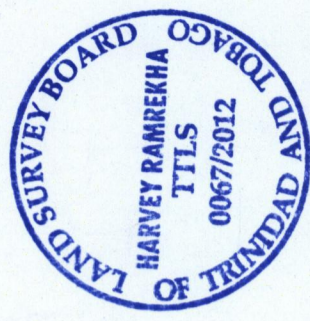


R.P.O. Vol. 3460 Fol. 511
 C.T. Vol. 426 Fol. 125
 Vol. 5536 Fol. 391

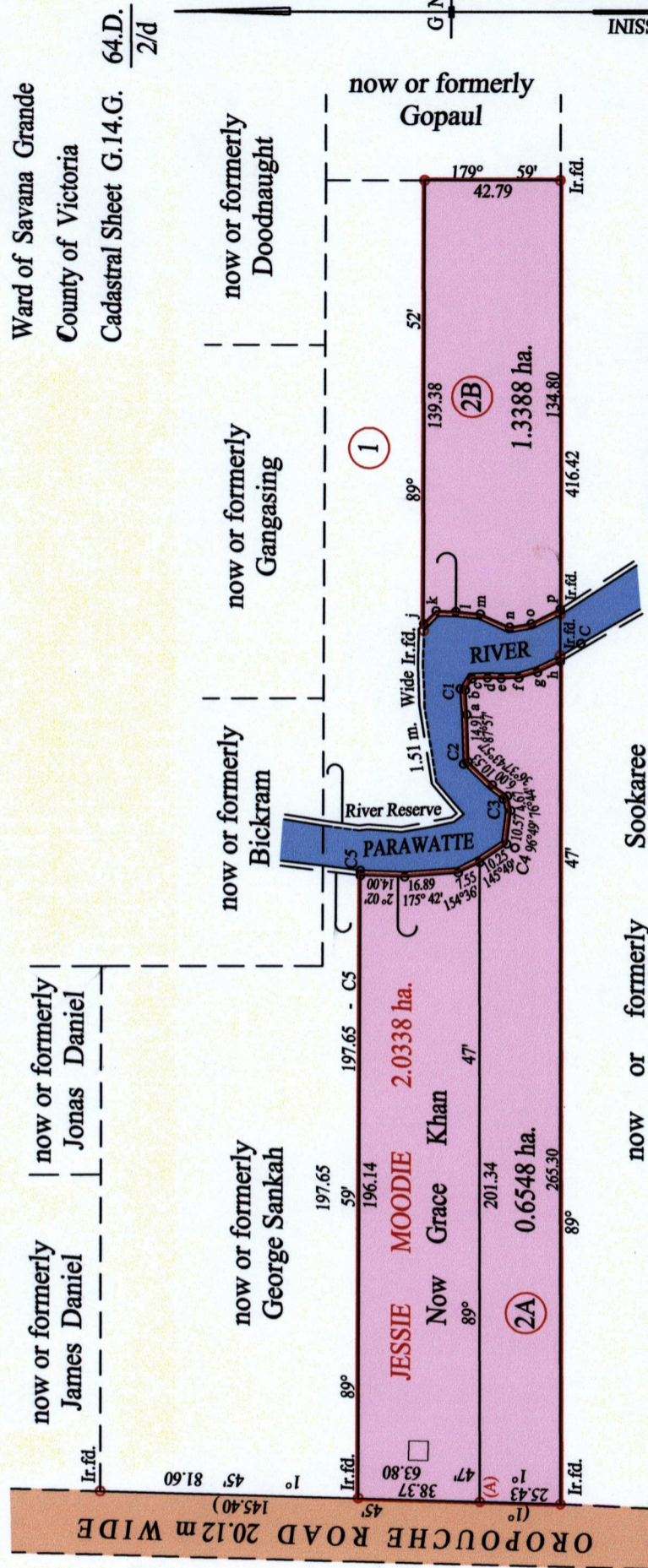
Process SD# 45196

Ward of Savana Grande
 County of Victoria
 Cadastral Sheet G.14.G. 64.D. 2/d

1395



171



At Station (A)
 E 0679084
 N 1125718
 Reading taken with
 Handheld G.P.S.
 U.T.M. Zone 20
 Naparima
 ± 5 m.

Vide Bk. 1003 fol. 95
 Vide Bk. 1197 fol. 73

a - b	86° 05'	7.73
b - c	120° 42'	4.12
c - d	177° 26'	4.88
d - e	182° 05'	4.34
e - f	178° 19'	5.55
f - g	163° 30'	6.10
g - h	155° 06'	8.00

j - k	133° 51'	5.60
k - l	182° 04'	6.23
l - m	185° 45'	7.75
m - n	204° 14'	10.14
n - o	170° 38'	6.96
o - p	153° 19'	10.20

Distances are in metres
 o Denotes Iron put except stated otherwise.

Note: Bearings are cassini grid based on solar observations
 PLAN of 2 Parcels of land coloured pink in the Ward of Savana Grande
 Containing together one point nine nine three six hectare
 Surveyed by me, with due authority, in July 2011
 In accordance with Regulation 25 (1) of the Land Surveyors' Regulations 1998,
 I certify that this plan is correct.

Checked by *[Signature]* July 15/11

Entered on *[Signature]* CHS.16-07-2012 Trinidad & Tobago Land Surveyor P. 3 :2012

Approved *[Signature]*
 Director of Surveys 2012.3.16

1395/171



LOT No.	CT. VOLUME & FOLIO	NAMES
2A	553G fol. 407	BRANDON JESSIE BISSESSAR
2B	553G fol. 405	SHANE & SHELDON SEECHARAN