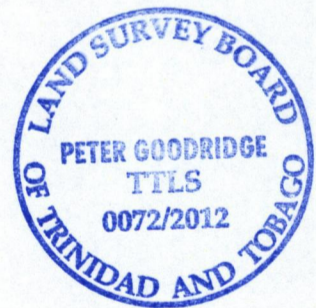
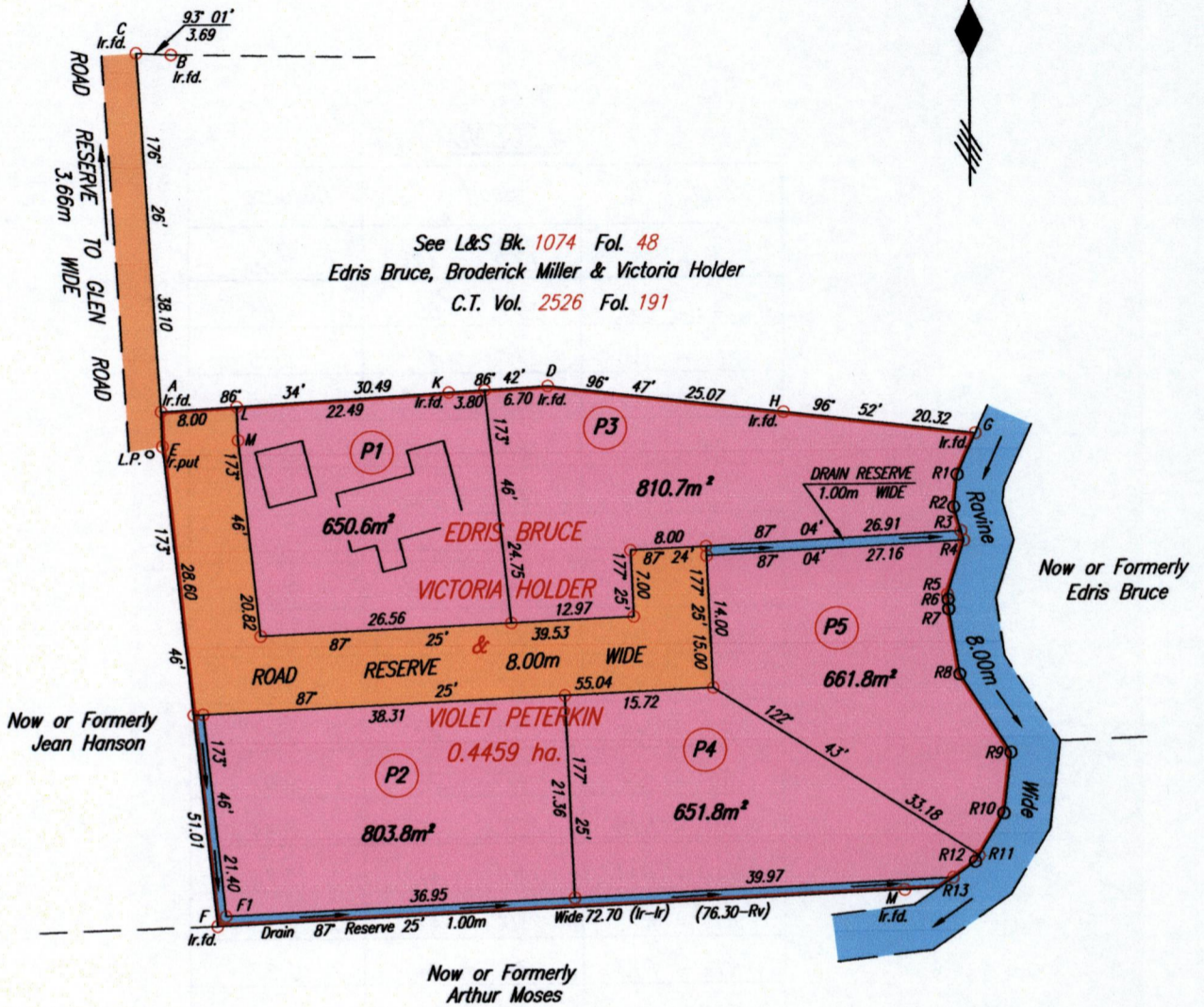


1395

1688

Process JP# 46700



Coordinates of A (lr. fd): 0746841mE, 1237850mN
UTM 20 Naparima (+/- 6m)
G.P.S. Direct Observation

Approved Director of Surveys 2012.3.13

SCALE 1 : 750

Distances are in METRES

○ Denotes Iron put except where otherwise stated

Bearings are Cassini Grid based on Solar Observations

PLAN of 5 Parcels of land coloured pink in the Ward of Tobago

Containing together three thousand five hundred and seventy eight point seven square metres
Surveyed by me, with due authority, on March 8th, 2010

In accordance with Regulation 25 (1) of The Land Surveyors' Regulations 1998,

I certify that this plan is correct.

Checked by 12.03.12

TTLS

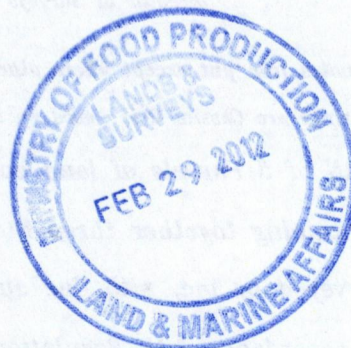
Entered on C.M.S. 16.02.2012

Trinidad & Tobago Land Surveyor
C:\LESS 2011\TOBAGO\PETERKIN,SOFIYA, GLEN ROAD, GEN PLAN, SUB APRIL 2011.dwg FILE NO:TP071

P.T.O. FOR LEGEND

LEGEND

<i>From</i>	<i>To</i>	<i>Bearing</i>	<i>Distance</i>
A - E		177° 47'	3.66
A - L.P.		195° 05'	4.64
L - M		177° 47'	3.55
G - R1		203° 53'	4.80
R1 - R2		186° 00'	3.43
R2 - R3		163° 24'	2.59
R3 - R4		163° 24'	1.03
R4 - R5		197° 22'	5.92
R5 - R6		171° 17'	0.60
R6 - R7		177° 25'	1.00
R7 - R8		170° 47'	7.05
R8 - R9		147° 28'	9.87
R9 - R10		186° 46'	6.44
R10 - R11		210° 47'	5.12
R11 - R12		210° 47'	0.75
R12 - R13		234° 44'	2.87
R13 - M		256° 26'	5.25
F1 - F		220° 35'	1.37



1395/168