

1395

1395/162

162

Ward of Siparia

County of St. Patrick

Cadastral Sheet G. 13 E. 63 E. 3/c

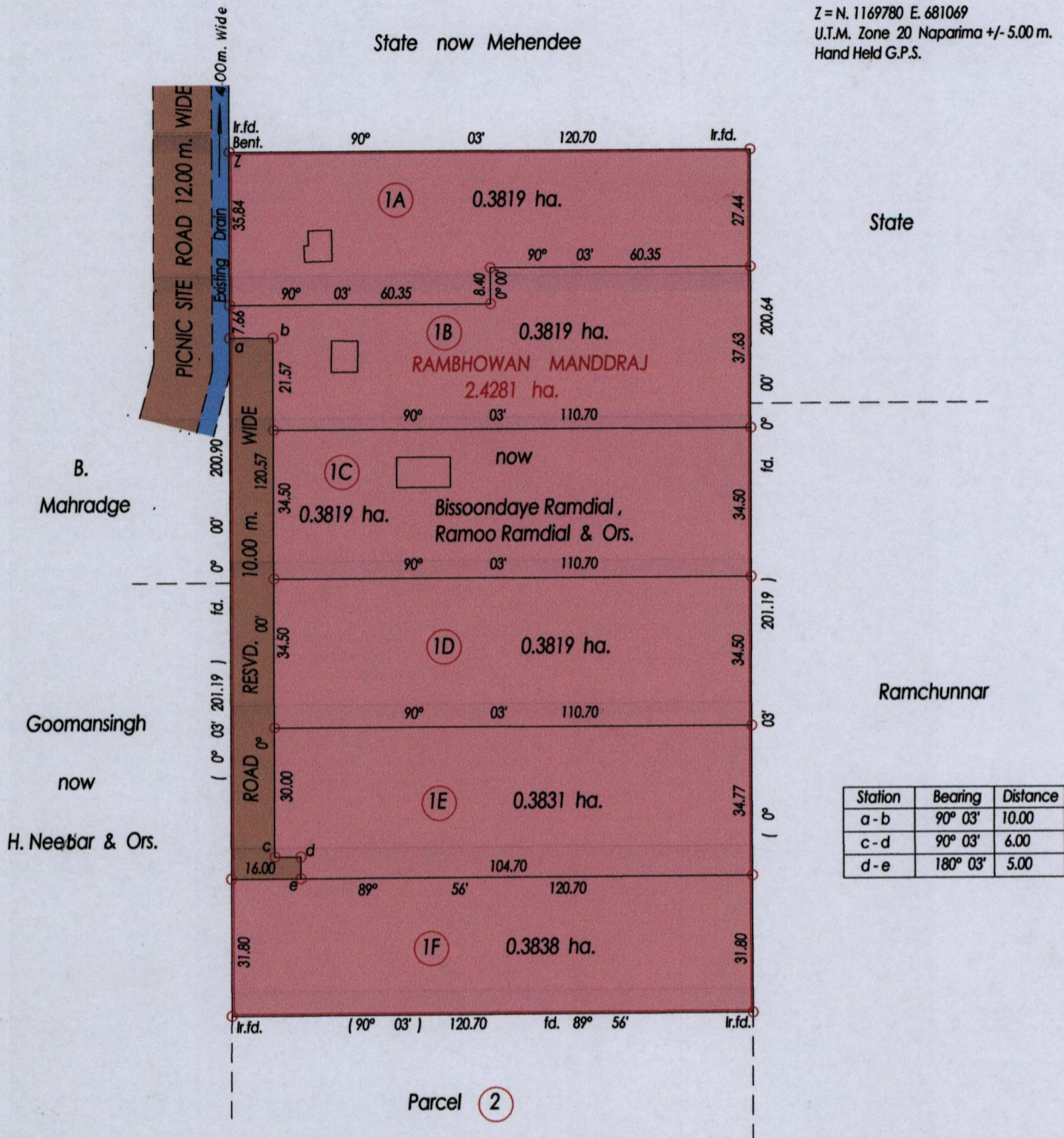
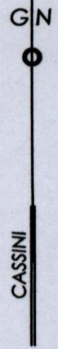
R.P.O Vol. 164 fol. 221

C.T. Vol. 1639 fol. 259

Bk. 966 fol. 25

State now Mehendee

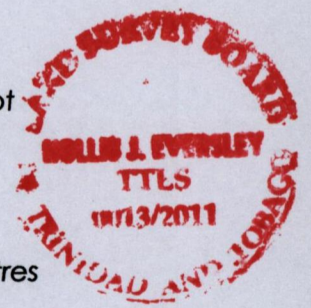
Z = N. 1169780 E. 681069
U.T.M. Zone 20 Naparima +/- 5.00 m.
Hand Held G.P.S.



Station	Bearing	Distance
a - b	90° 03'	10.00
c - d	90° 03'	6.00
d - e	180° 03'	5.00

○ Denotes Iron Put Except Stated Otherwise

SCALE 1 : 1500



Approved

[Signature]
Director of Surveys 2012.3.6

Bearings are Cassini Grid based on Solar Observations Distances are in Metres
PLAN of 6 Parcels of land coloured pink in the Ward of Siparia
Containing together two point two nine four five hectares
Surveyed by me, with due authority in, March 2011

In accordance with Regulation 25 (1) of the Land Surveyors' Regulations 1998,
I certify that this plan is correct.

Checked by.....

[Signature]

Entered on.....

Trinidad & Tobago Land Surveyor.....2011

[Signature]
24 Nov 2011