

1395/155

1395

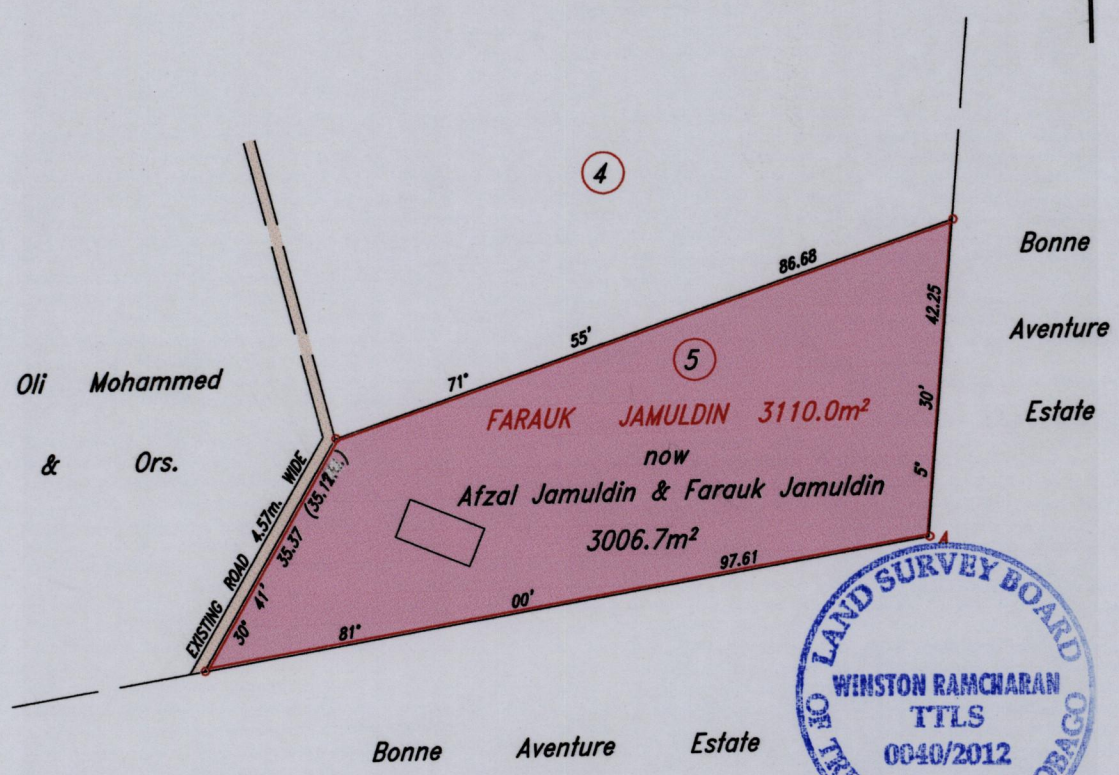
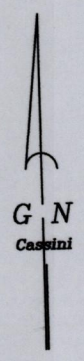
155

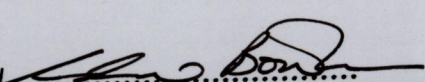
R.P.O. Vol. 151 Fol. 165
C.T. Vol. 2166 Fol. 213

Cadastral Sheet D.23.I. 53C & 54A
Ward of Pointe-a-Pierre 2/d 1/c
County of Victoria

Process ID# 42798

See Plan JA 160
See Bk. 1003 : 201



Approved 
Director of Surveys 2012.3.1



At A
N 1142025 U.T.M.
E 0674530
Nap. Datum +/- 5m.

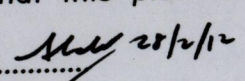
SCALE: 1/1000

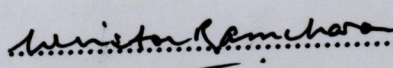
Distances are in Metres.

o Denotes Iron found unless otherwise stated
Bearings are Cassini Grid based on Solar Observations

PLAN of a parcel of land coloured pink in the Ward of Pointe-a-Pierre
Containing three thousand and six point seven square metres
Surveyed by me, with due authority, in January 2001

In accordance with Regulation 25 (1) of the Land Surveyors' Regulations 1998,
I certify that this plan is correct.

Checked by  28/2/12

 T.T.L.S.

Entered on.....

28th February 2012