

1395/15
1395

15

Process ID# 41315

Ward of Tamana

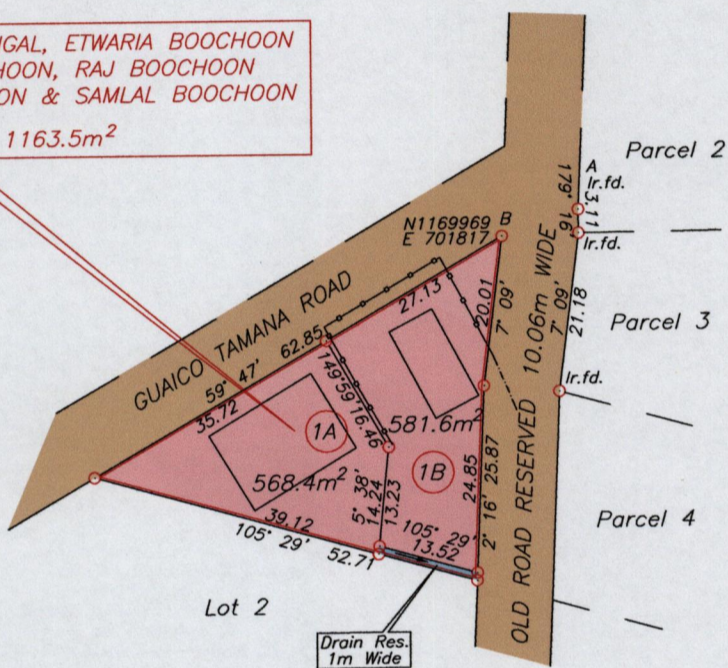
R.P.O. Vol. 66 Fol. 33

County of St. Andrew

C.T. Vol. 5088 Fol. 185

Cadastral Sheet E.1.D. $\frac{25E}{2/d}$

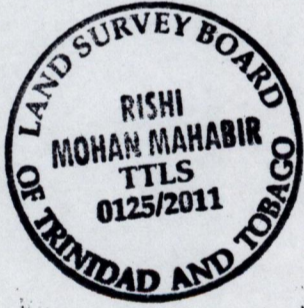
BOOCHOON MUNGAL, ETWARIA BOOCHOON
JOHN BOOCHOON, RAJ BOOCHOON
SONNY BOOCHOON & SAMLAL BOOCHOON
1163.5m²



G N
U.T.M.

Approved

[Signature]
Director of Surveys
2011-9-30



— wall
- - - - - fence

See Bk. 830A Fol. 47
Bk. 753 Fol. 57

A - B 251' 14' 10.71

SCALE 1/1000

Distances are in metres

○ Denotes iron put except where otherwise indicated.
Co-ordinates are UTM zone 20N Naparima Datum +/-5m
obtained from a hand held GPS.
Bearings are U.T.M. grid based on Solar Observations.
Note: To obtain compass bearings add 31 minutes.

PLAN of 2 Parcels of land coloured pink in the Ward of Tamana
Containing one one five zero square meters
Surveyed by me, with due authority, in July 2010

In accordance with Regulation 25 (1) of the Land Surveyors' Regulations 1998,
I certify that this plan is correct.

Checked by *[Signature]* 5/9/11
Entered *[Signature]* 17th Aug 2011
Trinidad & Tobago Land Surveyor