

Process ID # 46892

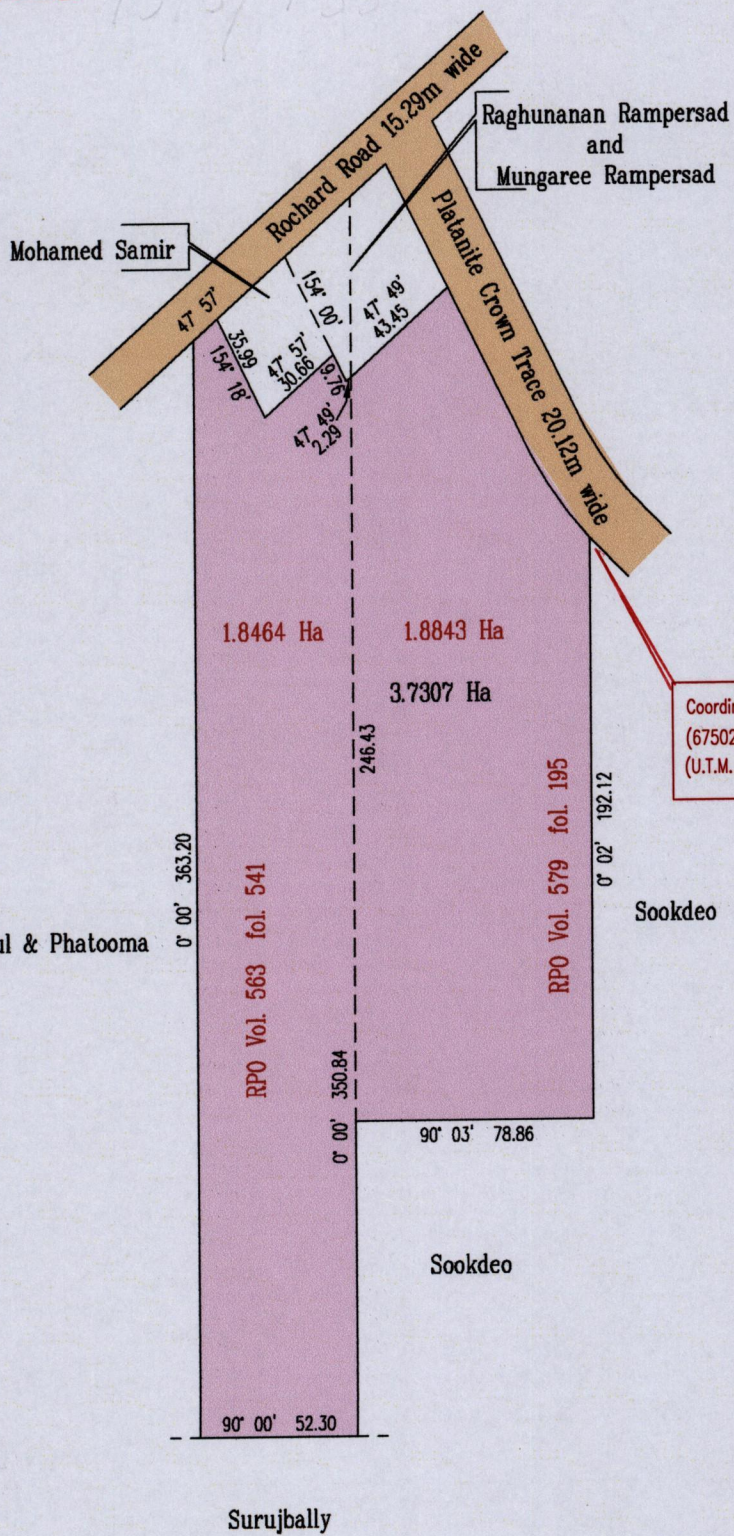
CONSOLIDATED PLAN

Ward of Siparia

County of St. Patrick

CT-Vol 5648 Fol. 203

1395/135



Vide
Bk. 970: 4
Bk. 970: 6



Coordinates scaled from ward sheet  
 (675027 mE, 1122845 mN)  
 (U.T.M. 20, Naparima 1955 Datum (+/- 10 m))



Approved  
*[Signature]*  
 2012.2.9 Director of Surveys

Bearings are Cassini Grid

SCALE 1:2500  
 Distances are in Metres

Plan of a Parcel of land coloured pink in the Ward of Siparia  
 Containing three point seven three zero seven hectares  
 Prepared by me, with due authority, in November 2011 for Mohammed Hosein  
 In accordance with Regulation 25(1) of the Land Surveyors' Regulations 1998, I certify that this plan is correct.

Checked by *[Signature]*

*[Signature]*

Entered on CMIS 17-07-2012

Trinidad & Tobago Land Surveyor 23/12/2011