

1395

127

1315/127

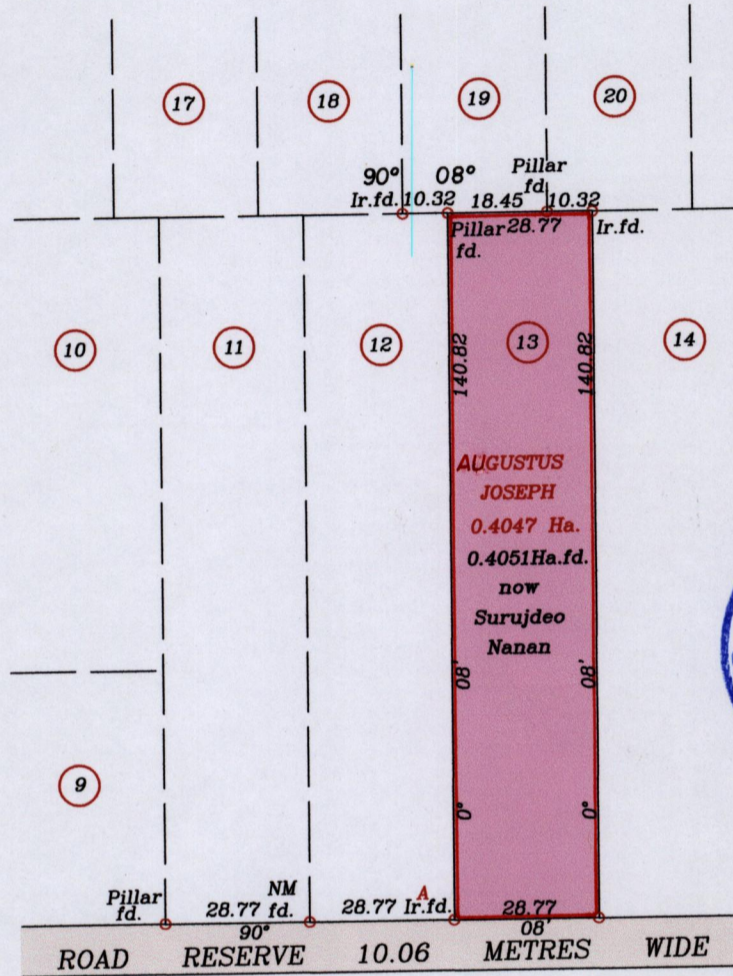
R.P.O. Vol. 875 Fol. 111

Cadastral Sheet G.12.B. 72F  
Ward of Erin  
County of Victoria

"Palo Seco Village"

See Plan AD 34  
See Plan LB 31

G N  
Cassini



Approved.....  
 Director of Surveys 2012.1.31

At A  

N	1114339	U.T.M.
E	0654517	Nap.20

 Hand-held GPS  
 +/- 5 metres

SCALE: 1/1500  
 Distances are in metres

o Denotes Iron put unless otherwise stated  
 Bearings are Cassini Grid based on Solar Observations

PLAN of a parcel of land coloured pink in the Ward of Erin  
 Containing point four zero five one hectares  
 Redefined by me, with due authority, in November 2011 for Surujdeo Nanan.  
 In accordance with Regulation 25 (1) of the Land Surveyors' Regulations 1998,  
 I certify that this plan is correct.

Checked by.....  
 Entered on.....  
 Winston Ramcharan T.T.L.S.  
 27<sup>th</sup> November 2011