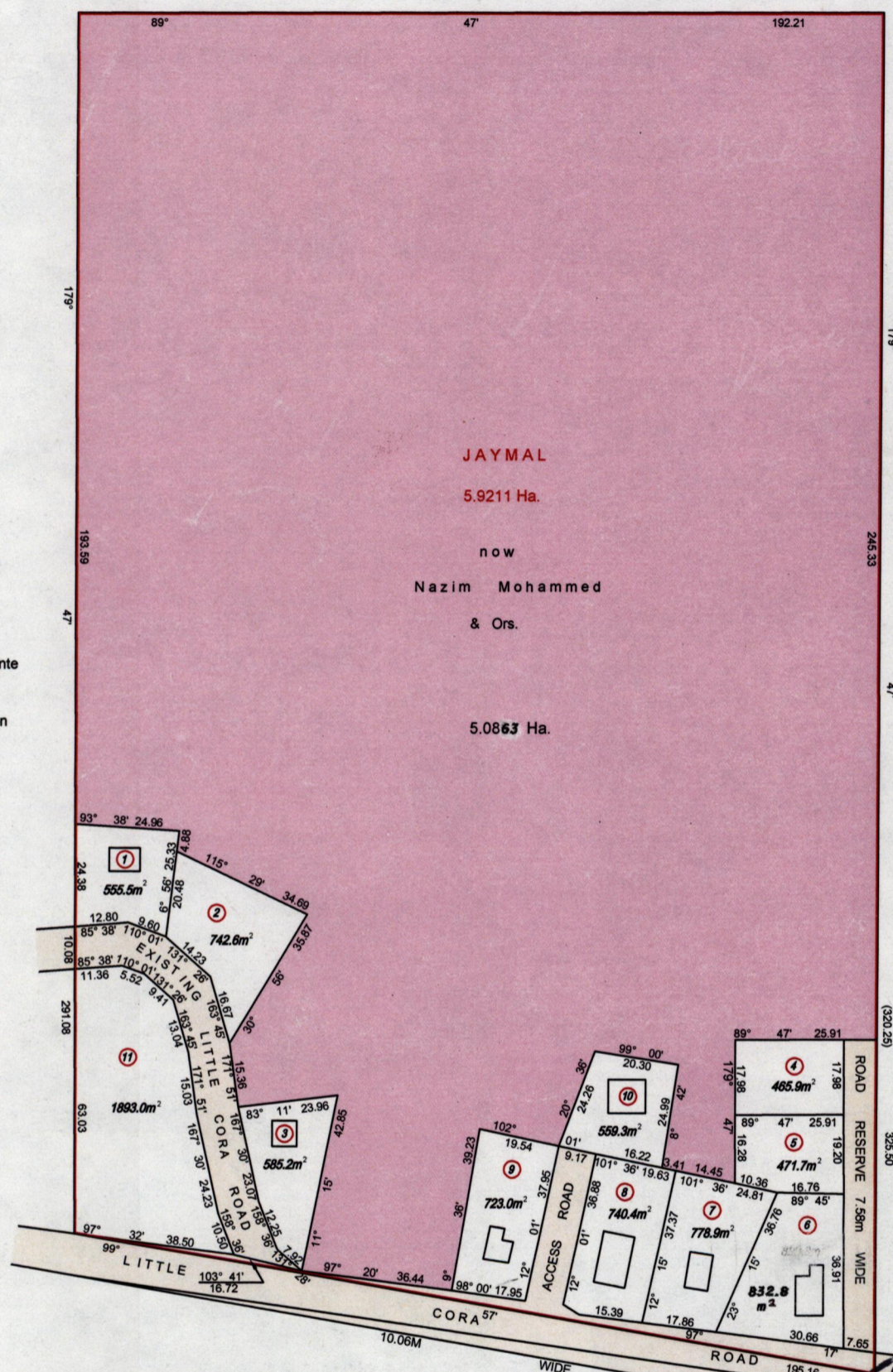


REMAINING PORTION

Bk 174.37  
 Plan Ref. R.H.32  
 J.D.158

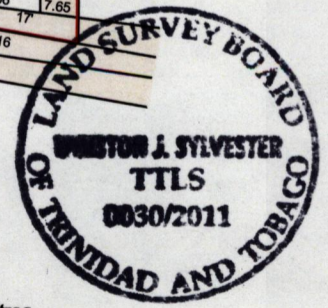
Boodhoo

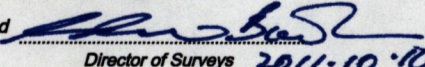


Alfred Claimonte  
 then  
 Alfred Angeron

Bahadour

- |   |  |
|---|--|
| 1. Vol.3006 fol.497 B. Ralph Hamza & Monica Mohamed | 7. Vol.3013 fol.359 Nazim & Sherifa Mohammed   |
| 2. Vol.3102 fol.281 Mohammed & Somina Khan          | 8. Vol.3008 fol.451 Shaheed Mohammed           |
| 3. Vol.3103 fol.367 Salim & Rasheda Mohammed        | 9. Vol.3139 fol.279 Asham & Dhanrajee Mohammed |
| 4. Vol.3037 fol.7 Zaimoon Khan                      | 10. Vol.3008 fol.445 Zaimoon Khan              |
| 5. Vol.3013 fol.353 Amalia & Afzal Mohammed         | 11. Vol.3026 fol.287 Hamid & Isha Mohammed     |
| 6. Vol.3008 fol.457 Nazir & Zanspha Mohammed        |  |

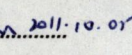


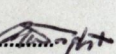
Approved   
 Director of Surveys 2011-10-10

Distances are in metres  
 SCALE : 1:1500

Note : To obtain compass bearings add 13 minutes

This is a true copy of a diagram of five point nine two one one hectares originally transferred to JAYMAL, showing a portion coloured pink and containing five point zero eight six three hectares being the remainder after 11 previous transfers of another portion of land  
 In accordance with Regulation 25(1) of the Land Surveyors' Regulations 1998,  
 I certify that this plan is correct.

Checked by  2011-10-07

Entered on  26-3-2011  
 Trinidad & Tobago Land Surveyor