

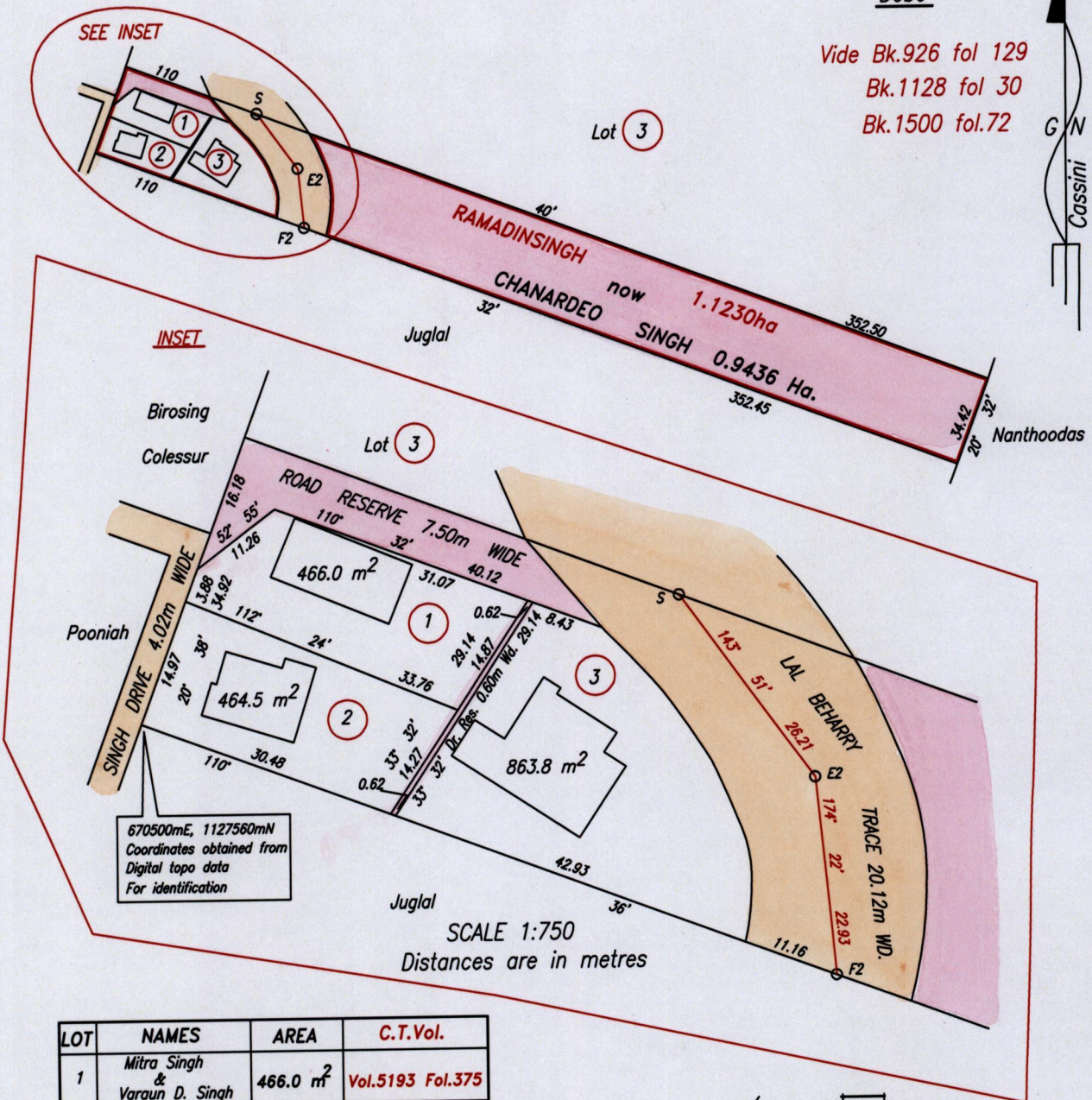
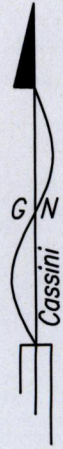
REMAINING PORTION

R.P.O. Vol. 8 Fol. 294
C.T. Vol. 1366 Fol. 153

Cadastral Sheet G.13.C. 63F
Ward of Naparima 1/b
County of Victoria

Debe

Vide Bk.926 fol 129
Bk.1128 fol 30
Bk.1500 fol.72

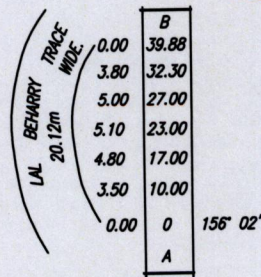


670500mE, 1127560mN
Coordinates obtained from
Digital topo data
For identification

SCALE 1:750
Distances are in metres

LOT	NAMES	AREA	C.T.Vol.
1	Mitra Singh & Varaun D. Singh	466.0 m ²	Vol.5193 Fol.375
2	Deodath Singh & Rick Singh	464.5 m ²	Vol.5193 Fol.367
3	Chanardeo Singh & Narine C. Singh	863.8 m ²	Vol.5193 Fol.383

NOTE: Lal Beharry Trace scaled from Bk. 926 fol. 129



Approved

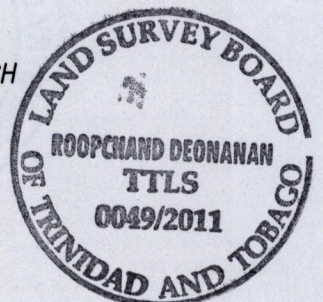
[Signature]
Director of Surveys 2012.1.20

SCALE 1:2500
Distances are in metres

This is a true diagram of a parcel of land in the Ward of Naparima
Containing one point one two three zero hectares originally transferred to RAMADINSINGH
Showing a portion coloured pink and containing zero point nine four three six hectare
Being the remainder after three previous transfers of other portions of the land.
In accordance with Regulation 25 (1) of the Land Surveyors' Regulations 1998,
I certify that this plan is correct.

Checked by *[Signature]* 2012.01.16

[Signature]



Entered on

Trinidad & Tobago Land Surveyor. 30th November 2011.
PATH = ADA004 C:/DEO/Singh(Ramai Trace)