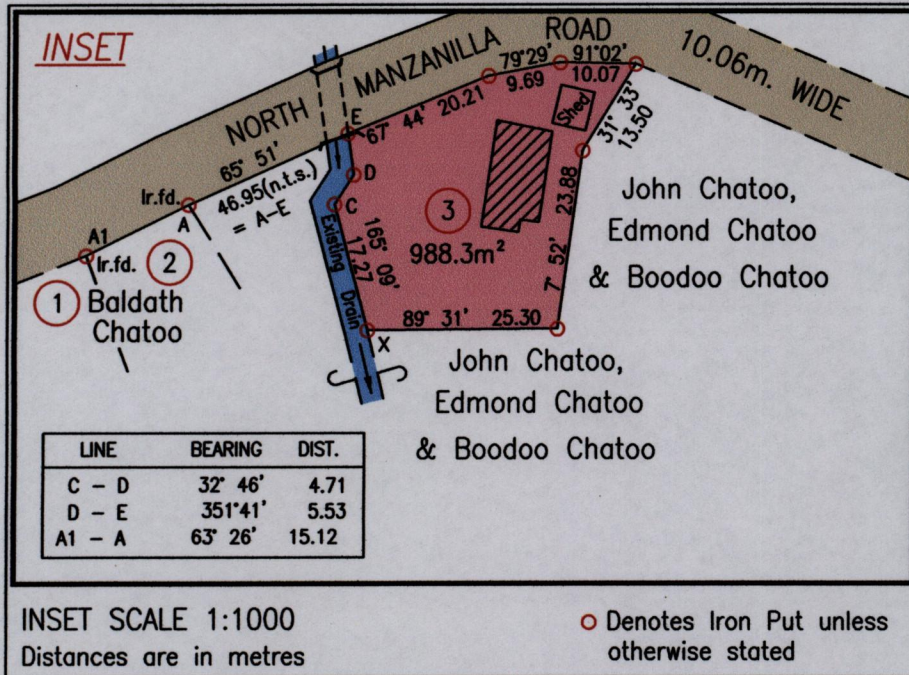


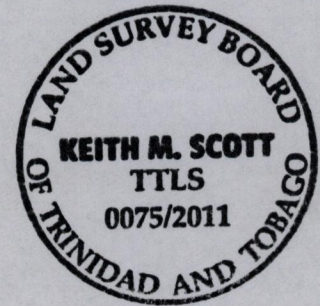
"1/4M.M. NORTH MANZANILLA ROAD NORTH MANZANILLA."

Remaining Portion Plan in Volume 5092 Folio 281



Vide	
Bk.	782:229
Bk.	1414:104
Plan	P.G.23

Grid North  
Cassini

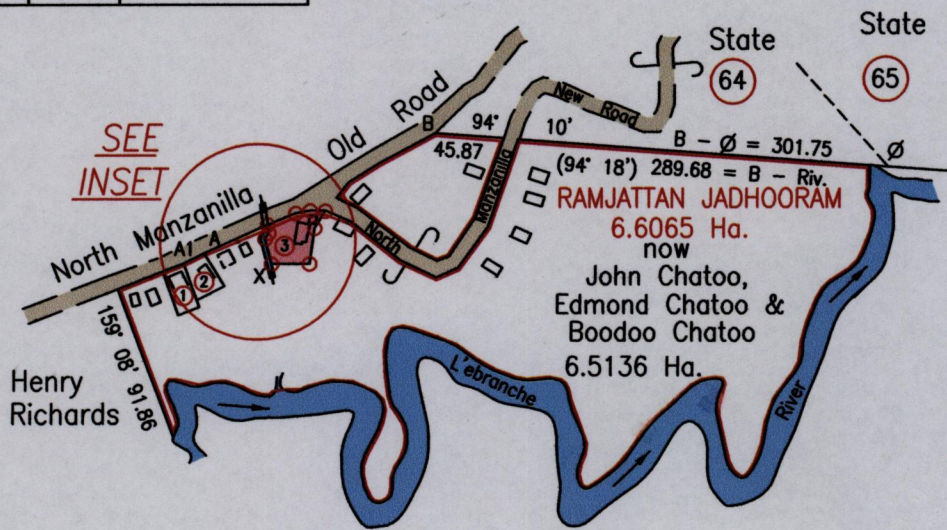


INSET SCALE 1:1000  
Distances are in metres

○ Denotes Iron Put unless otherwise stated

LOT NO.	NAME	AREA	C. of T. Ref.
1	BALDATH CHATOO	464.5m <sup>2</sup>	Vol. 5012 Fol. 35
2	BALDATH CHATOO	464.5m <sup>2</sup>	Vol. 5012 Fol. 35

LINE	BEARING	DIST.
A - B	62° 25'	172.30



Approved

*[Signature]*  
2012.1.11 Director of Surveys

E	712330	712500
N	1164125	1164309

Reliability Error ± 4.0 m.

Coordinates are UTM, Naparima 1955 from Garmin GPSmap 60CSx Handheld GPS Receiver

Bearings are Cassini Grid based on Solar Obs.

○ Denotes Iron Put unless otherwise stated

Plan of a Parcel of land coloured pink in the Ward of Manzanilla

SCALE 1:5000

Containing nine hundred and eighty eight point three square metres

Distances are in Metres

Surveyed by me, with due authority, in January 2011

In accordance with Regulation 25(1) of the Land Surveyors Regulations 1998,

I certify that this plan is correct.

Checked by *[Signature]* 28/12/2011

*[Signature]*

Entered on *[Signature]*

Trinidad & Tobago Land Surveyor *[Signature]* 29<sup>th</sup> August 2011